

## QA+Win™ V10.5

**Now with Microsoft® Windows 8 and Server 2012 support. Plus super enhancements to the User Interface and System Information Reporting. Not forgetting our superior, proprietary Microtopology (uTL) memory testing – ideal for finding intermittent or BUS noise errors.**

### QA+Win™ diagnostic features

- Added support for Windows® 8, available in both 32 & 64bit versions.
- Enhanced NIC group to support Internet Protocol V6.
- New Touchscreen and Input Peripherals groups including keyboard template generator.
- Enhanced chipset support now includes Intel Ivy Bridge.
- Enhanced Audio group testing.
- Video memory testing now supports up to 2GB.
- Added pass/fail exit codes for unattended testing.
- Enhanced system memory test more than 2GB and support for ECC memory.
- Added Machine and User name display.
- Enhanced System Group now includes new system sleep test.

### QA+Win™ Interface Enhancements

- Startup screen includes cancel button to exit, and percentage bar visual feedback of startup progress.
- Expanded numbering of test groups to support 64bit testing.
- Full docking capabilities added. Customize the size and arrangement of items in the Interface. Arrangement customization can also be saved and reloaded with a configuration file.
- Utilities toolbar made smaller, sharper, and with updated icons.
- Running test indicator now shown in Status Pane and Test Configuration Pane.
- Test percentage completed indicators now visible on the Test Configuration Pane for each test.
- Enhanced colour coding of test results for easy interpretation.
- Enhanced and modernized display of System Information.
- Status Pane shows information for log and results views.
- Error codes added to status pane and throughout diagnostics for enhanced reference.
- Pop up for adding CompTIA error codes for inclusion in test result reports.
- Hyperlinks to error code documentation and CompTIA error log configuration now available through the Status Pane.
- Advanced Pane added for benchmarking and performance for Hardware Monitor Test.
- Added 'Not available' as a test result to enhance interpretation of the test results.
- Treeview icons improved to more clearly show the status of the tests.
- More language support for Simplified Chinese.

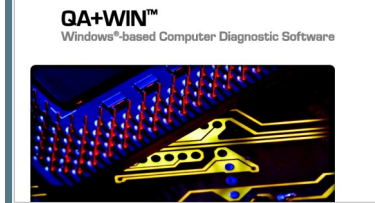
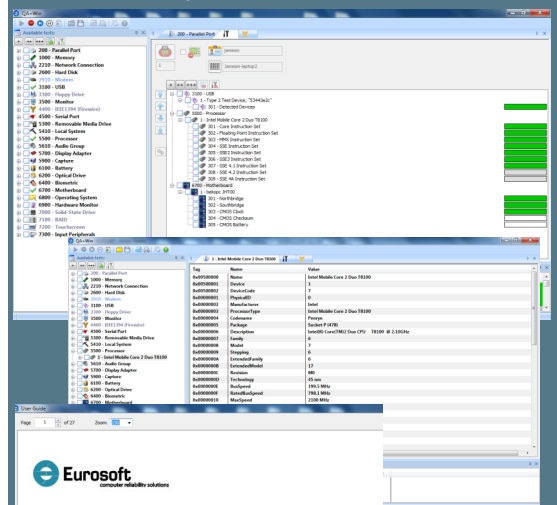


**Eurosoft (UK) Ltd**  
 Tel: +44 (0)1202 297315  
 Fax: +44 (0)1202 558280  
 www.eurosoft-uk.com

**Eurosoft (US) Inc**  
 Toll free tel: (888) 980-9595  
 Fax: (866) 615-9384  
 www.eurosoft-us.com

## now shipping!

If your diagnostics are out of date, don't wait! Call us now or visit our website to order the very latest QA+Win™ packs. (Call direct for a variety of site licenses.)



Upgrading to the latest version of QA+Win™ (10.5) keeps your hardware testing methods current. Upgrades and technical support are provided to you automatically for one year.

Check out features included in past updates at [www.eurosoft-uk.com](http://www.eurosoft-uk.com)

© Eurosoft (UK) Ltd. 1988-2013. Pc-Check, QA+ and QAPlus are registered trademarks of Eurosoft (UK) Ltd. Amberstone, Boot2Test, PC Builder, QAWin, QA+FE Service Center, ZeroData, Virtual QA+, Virtual Pc-Check, VPCS-Console, CD-Check, eTestManager, MakeImage, Preferred POST Board, USB Preferred Port Plug, SIBs, CDT, DVDT, EuroBIOS, EuroDOS are trademarks of Eurosoft (UK) Ltd. All other product trademarks are recognised as belonging to their respective owners. Windows is a registered trademark of Microsoft Corporation in the United States and other countries. Products or information may change without notice. The Microsoft® Windows® Pre-installation Environment software included with this device or software may be used for boot, diagnostic, setup, restoration, installation, configuration, test or disaster recovery purposes only. **Note: Windows PE v1.x contains a security feature that will cause end user's systems to reboot without prior notification to the end user after 24 hours of continuous use. Windows PE v2.x contains a security feature that will cause end user's systems to reboot without prior notification to the end user after 72 hours of continuous use.**  
 Rev 5 (Release February 2013)