

Why the biggest and busiest computer assemblers and service departments have relied on Pc-Check® to provide savings – in time, effort, and testing efficiency – for over 22 years...

Leveraging the Benefits of Testing

For over 2 decades, assemblers and service departments have reaped the rewards of diagnostic testing.

Saving Time

The most precious resource you have aside from your staff is time. We always need more. Pc-Check has saved assemblers and service departments significant time in all areas of operation including...

- initial manufacturing testing
- testing in the field service process,
- testing in the returns and refurbishment processes.

Time saving features include.....

- *Self-booting design– execute testing upon boot up regardless of installed operating system.*
- *Script editing, saving, and launching features let you run the same custom tests each time you boot Pc-Check eliminating operator choice.*
- *State of the art test algorithms designed to test the most sensitive and failure prone areas of components first in order to find failures quickly.*

Safety and Knowledge

For any component that is manufactured, there is always a small (or in some cases large) percentage of units that are failures for one reason or another; we refer to this percentage as fallout.

Fallout will occur on every component that is manufactured regardless of type.

Diagnostics Provide a Sanity Check

The key for manufactures and servicers is finding the fallout before it arrives with the customer. **The safe and proven approach to fallout management of PC components is diagnostic testing.**

Diagnostic testing provides a sanity check for incoming and outgoing systems ensuring you've made the right steps in your process.

An integral part of the safety of diagnostics is the data that is provided.

Detailed test outputs, system information, and report output functionality provides confirmation of required hardware, and streamlines warranty returns processes and proof-of-failure requirements.

Safety and information features include.....

Advanced Diagnostic Tests

Extensive test coverage for all major hardware groups including...

- Processor
- Memory
- Motherboard
- Drives
- Ports
- I/O
- Audio
- Video
- System Board
- and more
- Multi-cycle, Timed, Interactive or Passive burn-in testing modes.
- Over 70 command line options.
- Supports multiple processors on all CPU tests.

- Advanced USB Controller tests.

System Stress Tests

Identify problems that may not occur when components are tested individually.

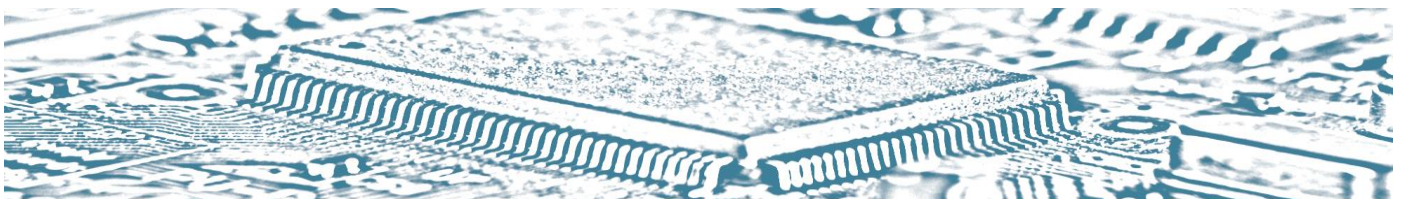
- CPU
- Hard Disk
- RAM
- CD/DVD
- Video
- And more...

Integrated system information tools show hardware in fine detail

- View detailed system information properties of every component.
- See System Management information.
- PCI Bus information.
- IRQ Routing information.
- Obtain detailed configuration as XML.

Complete separation of hardware and software

- Self-booting separates hardware from your native operating system.
- Separates hardware from device drivers.
- Identify and test memory modules individually for faster disaster recovery.
- Prompt identification of hardware.
- Perform state-of-the-art testing.
- Find problems fast.



Pc-Check® is the ideal low-level test tool...test and detect all hardware... without interference from the operating system or device drivers

Europe: +44 (0)1202 297 315

North America: 888-980-9595

Pc-Check® lets you...

- Guarantee reliability of all systems you build, install, or service
- Increase your profits by reducing system repairs and returns
- Manage your cash flow with various licenses
- Decrease your support costs with the support bundling license
- See **immediate ROI...**

Cost Elimination

- No more time lost on chasing intermittent issues.
- Eradicate time wasted on software and driver problems.
- Typically begin testing within 1 minute of turning on the PC.

Easy to Use – even by end users

- Single CDROM, USB Flash drive, floppy disk or PXE network boot options available with site license only – totally self-contained.
- Begin testing in 1 minute...without reading the manual.
- Choose from the Test menu.
- Select individual test modules.
- Simple DOS-like GUI offers all tests necessary to guarantee PC reliability.
- Reports reasons for “no fault found” that manufacturer-specific diagnostics can't find.

eTest Manager helps create over 65 different start-up options giving you total control over Pc-Check.

- Windows based script editor used to customise and build Pc-Check images.
- Set and save your testing environment settings for re-use throughout your operation.
- Command line option offers scripted selection of sub-tests.

- Create test scripts for use throughout your entire operation and supply chain.
- Receive exacting consistency and repeatability in PC testing by...
 - Saving your burn-in test setup as a file.
 - Referencing that file every time you start Pc-Check.

Record/ Save all testing related data

- Save all test results to a file.
- Save the test technician's name.
- Save each system serial number.
- Capture scripted test results as XML.

Enhanced CPU detection and testing

- Test as many as 160 logical processors simultaneously...including 64-bit.
- Multi-core L2 and L3 cache support.
- JIT code generation and virtual CPU models provide unlimited test combinations.

Hard disk performance check

- Test hard disks as large as 16 Petabytes.
- Large sector size support, test new 4k sector size devices.
- Fully test hard disks faster and achieve greater test coverage when using a specified testing duration.
- Interactive test option provides a quick benchmark to indicate possible disk faults.

- Perform a media sweep for visual analysis of performance stutter, as well as minimum, maximum, and standard deviation transfer rates.
- Superior SMART drive testing ensures excessive fault detections will fail a disk...regardless of vendor SMART implementations or the reported disk SMART status.

Network card controller tests

- Test high speed (1GB) network cards without an external loopback plug.

Improved Trusted Platform Module test

- Ensures that TPM devices are capable of securely storing data, such as passwords.

High Definition Audio tests

- As well as AC97 audio standard test

Please see the Eurosoft Product Test Table for specific hardware test coverage.

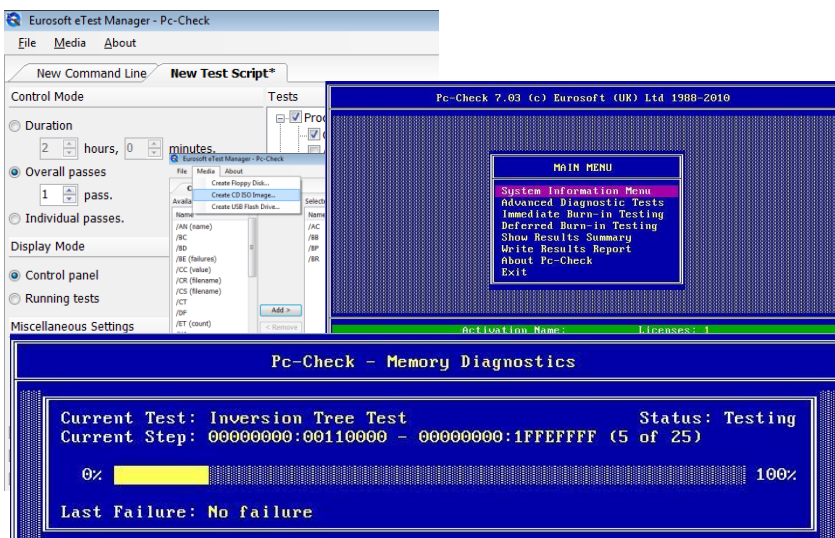
Pc-Check® supports industry standard test initiatives

Pc-Check® Package:

- Program CDROM
- Convenient download updates
- Comprehensive user e-manual
- USB Preferred Port Plug (1 per license)
- Loop-back plugs (2 Parallel, 1 Serial Port set per license)
- One year free Upgrade Subscription
- Free Technical Support
- Extra Test Accessory and Multiple System Testing License options available (contact Eurosoft for details).

Minimum System Requirements

- .Net Framework V3.5 or greater.
- Adobe Acrobat or similar PDF reader to read the manuals.
- Pc-Check®: EuroDOS™ self-booting operating system (included)
- eTestManager™: Microsoft® Windows XP, Windows 7 or 8 operating system
- Writable media capabilities i.e. CD-R[W] capable drive.
- Approximately 650MB of free hard disk space (for temporary use only).



Diagnostic coverage for all major hardware groups

System Information

- Hardware Configuration
- PCI Information
- SMBIOS Information
- Component Audit
- Export to File
- Memory and Sector Browsers

RAID Volume

- Read Tests
- Write Tests
- Random Access/ Seek Tests
- Performance Check
- Support for Exabyte Sizes

Solid State Drives

- Read Tests
- Random Access Tests
- Cache Tests
- Performance Check
- Standby Test
- SMART Status

Hard Drive

- Read Tests
- Write Tests
- Random Access Tests
- Cache Tests
- Performance Check
- Standby Test
- SMART Status
- SMART Short Self Test
- SMART Extended Self Test
- SMART Conveyance Self Test

All Fixed Disks

- Test Presets
- Fixed Duration Test Options
- 4K Sector Optimisation
- Up to 64 Disks.

Keyboard

- Key Operations
- LEDs
- Repeat
- Stuck Key Detection

Mouse

- Basic Operation

Parallel Port

- Controller
- External Loopback

System Board

- CMOS
- CMOS Battery
- Timers
- Interrupts

System Stress

- Timed Testing
- Multiple Processor/ Multiple Core Aware
- HyperTransport/ QuickPath Testing
- Local and Proxy Memory Access
- Distributed Memory Testing (Read and Write from different Cores)

USB

- Controller Tests
- External Diagnostic Device

Firewire

- Controller Tests

Network Interface

- Controller Test (Specific Controllers)

Monitor

- Check Gamma
- Colour Linearity
- Alignment
- LCD Dead Pixel
- Test Card

CPU

- Integer Core
- 64 Bit Operation
- MMX
- 3D-Now!
- SSE
- SSE 2
- SSE 3
- SSSE 3
- SSE 4
- Floating Point
- Multiple Thread
- Multiple Cores
- Multiple Processors
- Supports x2APIC
- Up to 192 Logical Processors

PCI Express

- Link Width Configuration

Serial Port

- Line Control
- Handshake
- Internal Loopback
- External Loopback
- FIFO Test
- PCI Port Expansion Cards
- Point of Sale Support
- Up to 16 Ports

Trusted Platform Module

- Self Test
- Subversion Attempt

HD Audio

- Real Time PCM Output
- Streamed PCM Output
- SPDIF DMA

Beeper

- Sound Internal Beeper

Optical Drive

- CD/DVD/BD-ROM
- Read Test
- Seek Test
- Tray Operation
- DVD Multi-Layer Test Disc

Video

- Linear Memory Tests
- Microtopology Memory Test
- Chaotic Memory Addressing
- True Colour Palette Test

Memory

- Module Quick Seating Test
- Linear Memory Tests
- Chaotic Memory Addressing
- Bit Stuck High or Low
- Coupled Bit Detection
- Unknown Physical Bit Locality
- Microtopology Test
- Proven Proprietary Algorithms
- Resolve to Module
- Support for 128 Modules
- Supports 4TB Total Memory

Call a Eurosoft consultant today to discuss your testing goals...

Pc-Check® Self-booting diagnostic software

Available test accessories help you find cabling and configuration errors faster.



Eurosoft PC Test Accessories include: USB Preferred Port Plugs™, Serial & Parallel Loop-back Plugs, Audio Test Cables, DVD Test Discs™, and CDROM Test Discs™. Stand-alone accessories include the Preferred POST Board™ PCI/ISA.

Extend and enhance your test procedures with Eurosoft's proven PC Diagnostic Programs and unique test accessory hardware. Each computer testing accessory is developed to work specifically with Eurosoft's test programs providing you with independent and reliable test results of peripheral ports and media devices.

Need more test coverage?

Also consider adding Eurosoft QA+WIN™ Diagnostic Software for testing inside of Windows



Addresses all aspects of the PC lifecycle, including assembly, support, repair and recycling

Thoroughly tests components and peripherals using Windows-based diagnostics for software driven/PCI hardware

Delivers wide-ranging hardware tests to ensure that PCs are configured correctly regardless of the component brands

Allows fast and targeted test loading to satisfy vendor-specific tests requirements

Reduces expensive field service calls, NTFs, wrongful product returns and overstocked field service products

Provides test and diagnostic data that can be printed, viewed or used to generate reports and other user-specific requirements

Call a Eurosoft consultant today to discuss your testing goals...

Contact us for further information on Pc-Check® or any other Eurosoft product.

Eurosoft (UK) Ltd
Head Office
3 St Stephens Road
Bournemouth, UK BH2 6JL

Tel +44 (0)1202 297315
Fax +44 (0)1202 558280

info@eurosoft-uk.com
www.eurosoft-uk.com

Eurosoft (US) Inc.
North American Sales Office
Unit 8, PMB 304, 679 Washington Street
South Attleboro, MA 02703, USA

Tel US Toll Free +1 (888) 980-9595
Fax +1 (866) 615-9384

info@eurosoft-us.com
www.eurosoft-us.com

© Eurosoft (UK) Ltd. 1988-2013. Pc-Check, QA+ and QAPlus are registered trademarks of Eurosoft (UK) Ltd. Amberstone, Boot2Test, PC Builder, QA+Win32, QA+FE Service Center, ZeroData, Virtual QA+, Virtual Pc-Check, CD-Check, Preferred POST Board, USB Preferred Port Plug, CDT, DVDT, EuroBIOS, EuroDOS are trademarks of Eurosoft (UK) Ltd. All other product trademarks are recognised as belonging to their respective owners. Windows is a registered trademark of Microsoft Corporation in the United States and other countries. Products or information may change without notice. The Microsoft® Windows® Pre-installation Environment software included with this device or software may be used for boot, diagnostic, setup, restoration, installation, configuration, test or disaster recovery purposes only. **Note: Windows PE v1.x contains a security feature that will cause end user's systems to reboot without prior notification to the end user after 24 hours of continuous use. Windows PE v2.x contains a security feature that will cause end user's systems to reboot without prior notification to the end user after 72 hours of continuous use.**

