

Pc-Check® v8.02

New USB 3.0 controller testing, S.M.A.R.T. data export and the ability to create optical testing media. Enhancements made to reporting, and command line switches to help save you testing time.

Pc-Check continues to provide the greatest test coverage possible, on the widest variety of PC systems, in an OS free, self-booting environment.

Eurosoft has helped users worldwide to find millions of computer failures since 1980. No exaggeration.

Developing intricate computer diagnostic software – because other hardware tests miss them completely – Eurosoft fulfils challenging testing needs for computer-based environments. Supporting computers built around Microsoft, AMD and Intel technologies, we determine missing, failed and perfect computer components – regardless of brand.

Pc-Check® gives you the confidence you need to validate working versus problematic hardware. Pc-Check® has more commercial years of professional users than any diagnostic software. Join our dedicated customers, from OEM to local service shop, ensuring reliable test results today.

Pc-Check® upgrades keep you up-to-date with the latest diagnostics and best case testing practices. You can count on a continued flow of reliable test results whether you are building, installing, supporting, servicing or refurbishing computers. Pc-Check® offers you greater support for testing multiple devices regardless of operating systems.

| Pc-Check® features | The benefits to you |
|---|--|
| New support added for USB 3.0 | Identify, test, and report that all USB 3.0 host controllers are functioning correctly. |
| New S.M.A.R.T. data export | Added by request. Collect S.M.A.R.T. data and export to the immediate S.M.A.R.T. test results in XML format . |
| New options to create optical media testing discs. | Create both CD, and dual layer DVD media with known test data from within eTest Manager to accurately test optical devices. |
| Enhanced failure reporting | Added device information now makes it easier to identify which physical component has failed e.g. which memory module failed during testing. |
| Enhanced command line option /BFA | Added by request. When a device has reported a failure, further scripted tests will not be run on the failed device and will be recorder as “Not Run” saving testing time. |
| Enhanced command line option /BT | Causes burn-in time written to test reports (XML and Text) to accumulate when running successive scripts showing the total amount of time the PC was tested for. |

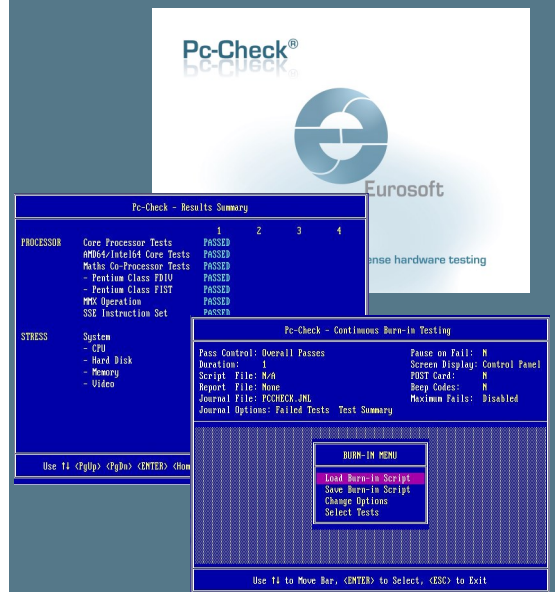


Eurosoft (UK) Ltd
Tel: +44 (0)1202 297315
Fax: +44 (0)1202 558280
www.eurosoft-uk.com

Eurosoft (US) Inc
Tel: (401) 751-9595 Fax: (866) 615-9384
Toll free tel: (888) 980-9595
www.eurosoft-us.com

now shipping!

If your diagnostics are out of date, don't wait! Call us now to upgrade or get your site license. Visit our website to order more great Pc-Check® packs.



Upgrading to the latest version of Pc-Check® (8.02) keeps your hardware testing methods current. Upgrades and technical support are provided to you automatically for one year.

Check out features included in past updates at www.eurosoft-uk.com

© Eurosoft (UK) Ltd. 1988-2014. Pc-Check is a registered trademark of Eurosoft (UK) Ltd. Virtual Pc-Check, VPCS-Console, Aggregator, Boot2Test, QA+Win, QA+Win32, QAPlus, Virtual QA+, Amberstone, PC Builder, QaTest32, Zero-Data, USB Preferred Port Plug, CDT, DVDT, EuroBIOS, EuroDOS are trademarks of Eurosoft (UK) Ltd. All other product trademarks are recognised as belonging to their respective owners. Windows is a registered trademark of Microsoft Corporation in the United States and other countries. Products or information may change without notice. Windows is a registered trademark of Microsoft Corporation in the United States and other countries. Products or information may change without notice. The Microsoft® Windows® Pre-installation Environment software included with this device or software may be used for boot, diagnostic, setup, restoration, installation, configuration, test or disaster recovery purposes only. Note: Windows PE v1.x contains a security feature that will cause end user's systems to reboot without prior notification to the end user after 24 hours of continuous use. Windows PE v2.x contains a security feature that will cause end user's systems to reboot without prior notification to the end user after 72 hours of continuous use.