

Pc-Check® Windows® V3.5.4.0004

All about CPUIDs...well almost. Adding to the list of CPUs with our independent testing is always at the forefront. Taking another step to increase CPU testing effectiveness, we've focused the Processor Temperature test with an all-new "Core only" parameter test to critically assess hardware, curtailing damage. To expand your keyboard testing capability, we've added more new keyboard templates for country-specific layouts. And without fail, added new PCI devices to the diagnostic line-up.

Pairing & Sharing... Combine Pc-Check® Windows® + ZeroData™ Windows® on a single USB. Giving a powerful combination of hardware diagnostics and data erasure that can be applied in a wide variety of troubleshooting, maintenance, and refurbishing scenarios. The combination of tools offers efficiency, security, and versatility, providing an all-in-one solution for system health checks, problem-solving, and safe data management.

Awesome reminders, only Eurosoft do these...

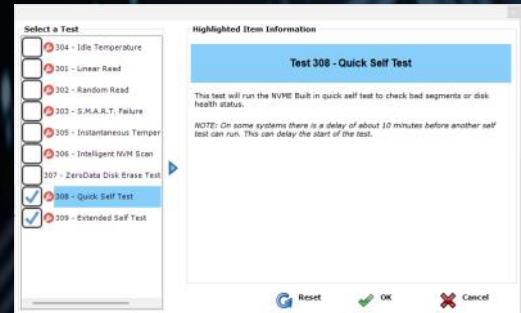
Test more memory than other Windows-based diagnostic tools – Unlimited DIMM reporting 512Gb (W8.1) to 1TB memory (W10, 64Bit); and **2-Exabyte drives; 256 core CPU** packages, video, and UEFI enabled hardware.

1st place – Longest running diagnostic company – 40+ years – with spectacular results from the first-on-the-scene **Microtopology** memory testing, and our original 'self-boot' capability in 1986!

Pc-Check® Windows® features	Benefits for You
NEW Arm® (64 bit) testing	Increase testing coverage of Arm systems and devices with Windows emulation.
Enhanced Processor testing	New testing parameters for AMD Temperature and Power thresholds. Updated Processor Temperature and Power threshold values for Intel Processors, and improved Processor Power Stress testing with added Power Multiplier parameter.
Enhanced NVMe testing	Improved fault finding with two new NVMe Self tests, Quick Test and Extended Test.
Updated CPUID	Support added for Intel Core Ultra X9 388H, Core Ultra X7 368H and 358H, Core Ultra X5 338H (Panther Lake-H). Intel Core Ultra 9 375H, Core Ultra 7 355H and 345H, Core Ultra 5 325H (Panther Lake-H). Intel Core Ultra 7 360U, Core Ultra 5 350U and 340U, Core Ultra 3 320U (Panther Lake-U). Intel Core Ultra 3 205 (Arrow Lake). Intel Core i5 110 (Comet Lake). AMD Ryzen 5 5600F (Vermeer). AMD Ryzen 9 PRO 9945, Ryzen 7 PRO 9745, Ryzen 5 PRO 9645 (Granite Ridge)
Enhanced Stress testing	Includes test improvements, 3D graphics and memory usage reporting in sensors.
Enhanced Storage device testing.	Intelligent Scan has been optimized to fastest duration by default .

Product Announcement Pc-Check® Windows®

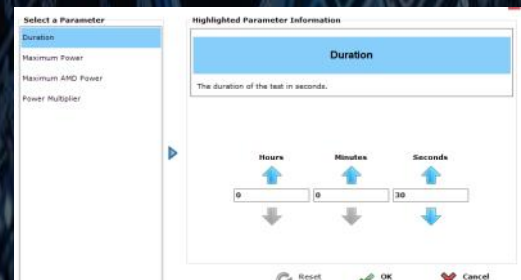
NVMe Quick Self Test



Power Stress Test Power Multiplier



Power Threshold Test Parameter



Like what you see?

Combine **Pc-Check® UEFI** and **Pc-Check®**, the ultimate bare metal testing solution with **Pc-Check® Windows®**, expanding your range of diagnostics to a perfect 3-point test plan.

FREE Updates and technical support provided automatically for one year. Keep your hardware testing methods current. Upgrade to the latest version of **Pc-Check® Windows®**

ALL FEATURED UPDATES

www.eurosoft-uk.com

Previous Release Highlights

CPUID	Improved processor testing. Support added for NVIDIA RTX 5090 & 5080 GPUs, AMD Ryzen 9 9955HX3D, 9955HX, 9950HX3D, 9950HX, 9850HX, 9845HX (Fire Range).
Processor testing	Support added to identify the processor Thermal Junction Maximum, the temperature at which a processor will start to reduce performance to cool down.
Windows 11 test	Confirms PC system/devices are ready for Microsoft Windows® 11 installation, as well as ensuring your chosen PC hardware meets system requirements before upgrading hardware and operating systems.
Test scripts and parameters updates	Test scripts updated to reflect the best use of test time and product enhancements. For example Multi threading parameter during memory testing or adding the GPU driver crash test to the default full test Script.

Please contact us if you require 32bit Windows 7 testing options.

Combine Pc-Check® UEFI and original Pc-Check® Self-boot for the ultimate 'bare-metal' testing solution alongside Pc-Check® Windows®, expanding your range of diagnostics to a perfect 3-point test plan.



Developing intricate computer diagnostic software – *because other hardware tests miss them completely* – Pc-Check® Windows® is indispensable. Count on a continued flow of reliable test results whether building, installing, supporting or servicing computers. Pc-Check® Windows® offers the greatest support for testing a multitude of new or legacy devices both pre-boot WinPE or full Windows operating system.

Eurosoft has helped to find millions of computer failures since 1980. No exaggeration! Celebrating 45+ years — with success from our exceptional customers.

NOTE: *WinPE has reduced driver support limiting its test function. The full Windows operating system is required for certain device driven hardware.

Eurosoft (UK) Ltd
Tel +44 (0)1202 297315
www.eurosoft-uk.com

Eurosoft (US) Inc.
Tel +1 (712) 255-7483
www.eurosoft-us.com

SEND US YOUR IDEAS....

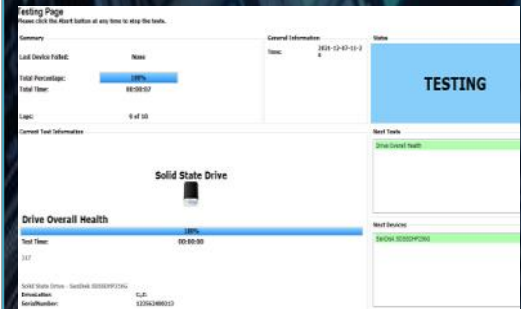
[Support and Feature Requests](#)

Product Announcement Pc-Check® Windows®

System Scoring

What condition is the case in?	Perfect Condition	2.00
What condition is the screen in?	Perfect Condition	2.00
Are there any stickers or residue on the case?	No Marks	2.00
Are the hinges functional?	Yes	2.00
Are there any pieces of the chassis or case missing?	No	0.00
Are there any other accessories missing?	No	0.00
How many USB Ports are there?	3	1.50
How many HDMI Ports are there?	1	0.50
Functional RAM reader?	No	0.00
Do the buttons all work as intended?	Yes	2.00
Keyboard backlight either not present or working?	Yes	2.00
Is the BIOS password locked?	No	0.00
Does the system come with the factory restore media or	No	0.00
Are OEM Parts in the system?	Yes	2.00
Does the system come with a lock?	Yes	2.00
Is the power adapter included?	Yes	1.00
User manual included?	No	0.00
		0.00

Overall Drive Health



Diagnostics out of date? Other tools not meeting your demands? Call us to discuss your testing needs. Visit our website to order all the Pc-Check® diagnostic suite at any time. Site licenses, special development and quantity discounts available. DATA ERASURE — ZeroData™ Windows® is ready for you.



© Eurosoft (UK) Ltd. 1988-2026. Pc-Check is a registered trademark of Eurosoft (UK) Ltd. PC Builder, Pc-Check UEFI, Pc-Check Windows, Pc-Check Virtual Pc-Check, ZeroData, ZeroData Windows, USB Preferred Port Plug, CDT, DVDT, EuroDOS are trademarks of Eurosoft (UK) Ltd. All other product trademarks are recognised as belonging to their respective owners. REV280526KH

Note: Windows PE v1.x contains a security feature that will cause end user's systems to reboot without prior notification to the end user after 24 hours of continuous use. Windows PE v2.x contains a security feature that will cause end user's systems to reboot without prior notification to the end user after 72 hours of continuous use.