

## Pc-Check® UEFI + Arm® v2.00 NEW RELEASE...

**Twist my ARM** – ok with new testing for the Arm® platform arose – test cover for motherboard, CPU, RAM, TPM, NVMe and more, all ready to use from the latest Pc-Check UEFI release with an easy upgrade. **Talk about Trust**, the latest Enhanced System Information feature captures installed Secure Boot Certificate information so you can send it as a file – these certificates establish the chain of trust between firmware and the Windows operating system, blocking tampered code at boot.

**Joined up Thinking...** Smoothing test workflows, MultiMode combines Pc-Check® Windows® + Pc-Check® UEFI, extending testing precision by converting with/without an OS, pinpointing failures from one USB. Refurbishing role... Pc-Check Windows + ZeroData Windows smooths the way for one-touch device testing and data erasure from all kinds of storage drives. Do be extra cautious with customers... Pc-Check® UEFI Embedded diagnostics, give on-demand diagnostics, aiding support teams and end users with comprehensive, attractive test tools.

### Awesome reminders, only Eurosoft do these...

Pc-Check UEFI (+ARM) diagnostics **PRECISELY identify hardware failures**. Unlike other so called UEFI diagnostics, Pc-Check® UEFI diagnostics was the **FIRST** tool to directly test essential UEFI components, regardless of BIOS or brand – including Arm the platform. **NO operating system in the way – NO Linux, NO Windows, NO secure boot issues – only UEFI testing in pure native mode.**

**Test more memory, drives and CPUs like no other diagnostic tool** – remarkable 256 DIMM up to 2-Exabytes memory, and ‘Multi-Exabyte’ drives, plus 1024 ‘Kilo-core’ CPU packages with always more tests coming...

**1st place** – Longest running diagnostic company – 45+ years – with spectacular results from our #1 native-UEFI technology, award-winning, Microtopology memory testing, and the original ‘self-boot’ capability in 1986!

### Pc-Check® UEFI Features

**NEW Arm® (64 bit) licensing option**

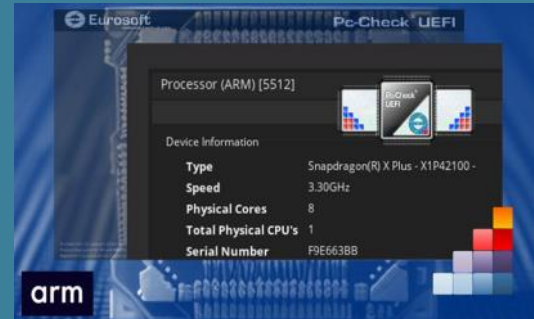
Arm system and device testing providing information for the following groups with comprehensive testing in each:

- Motherboard
- Memory
- Processor (Arm)
- Graphics Card
- TPM
- System
- NVMe
- System Block Device
- Network Interface
- USB
- Keyboard
- Mouse
- Touch
- Monitor

### Benefits for You

## Product Announcement Pc-Check® UEFI

### Arm® Testing Option



### Arm® Processor Testing



### Arm® Diagnostic Menu



**FREE Updates and technical support** provided automatically for one year. Subscribe to keep your hardware testing methods current. Upgrade to the latest versions of **Pc-Check UEFI**.

**ALL FEATURED UPDATES**

[www.eurosoft-uk.com](http://www.eurosoft-uk.com)

*Like what you see?*

Combine **Pc-Check® UEFI** and **Pc-Check®**, the ultimate bare metal testing solution with **Pc-Check® Windows®**, expanding your diagnostic range with a perfect 3-point test plan.

Pc-Check® UEFI Features	Benefits for you
New Drive Minimum Threshold test	Monitor data speeds to identify drives that are operating at an unusually slow pace, which could indicate underlying issues such as excessive retries or error correction.
Enhanced Monitor testing	When available, it is now possible to collect Extended Display Identification Data such as the panel size (cm) and year of manufacture.
Enhanced Keyboard testing	Detect when firmware does not support toggling of keyboard LEDs and make that test unavailable. Improved Keyboard template editor for dynamically scaled font handling and 'snap to grid' to help with aligning items.
Enhanced Configuration Editor	The Configuration Editor is now accessible via the System Information menu or by pressing F8 at start-up; changes apply on the next restart. The F8 prompt appears earlier in the start-up process, allowing problematic groups to be skipped without manual file edits.
Enhanced System Information	Capture installed Secure Boot Certificate information and export as .lic file to prove security to customers and record in operations.

Includes the original Pc-Check® Self-boot, Pc-Check UEFI offering the ultimate 'bare-metal' testing solution including Arm®.

Combine Pc-Check® Windows, expanding your range of diagnostics to a perfect 3-point test plan.

Get embedded with the new Pc-Check® UEFI Embedded Fixed Disk and BIOS installed diagnostics, to remotely test devices wherever used globally.



**Developing intricate computer diagnostic software – because other hardware tests miss them completely – Pc-Check UEFI is indispensable.** Count on a continued flow of reliable test results whether building, installing, supporting or servicing computers. Pc-Check UEFI offers the greatest support for testing a multitude of new or legacy devices outside of the operating system.

**Eurosoft has helped to find millions of computer failures since 1980. No exaggeration! Celebrating 45+ years — with success from our exceptional customers.**

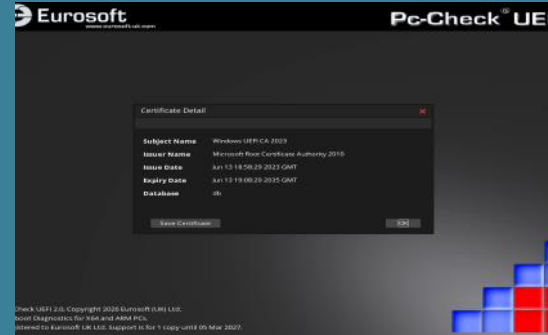
**Eurosoft (UK) Ltd**  
Tel +44 (0)1202 297315  
www.eurosoft-uk.com

**Eurosoft (US) Inc.**  
Tel +1 (712) 255-7483  
www.eurosoft-us.com

### Drive Threshold Test



### Secure Boot Certificate Information



### NVMe Test Menu



Diagnostics out of date? Other tools not meeting your demands? Call us to discuss your testing needs. Visit our website to order all the Pc-Check® diagnostic suite at any time. Site licenses, special development and quantity discounts available. DATA ERASURE — ZeroData™ Windows® is ready for you. EMBEDDED DIAGNOSTIC TOOLS — Pc-Check® UEFI Embedded Fixed Disk and BIOS Diagnostic Software, call to install.



© Eurosoft (UK) Ltd. 1988-2026. Pc-Check is a registered trademark of Eurosoft (UK) Ltd. PC Builder, Pc-Check UEFI, Pc-Check Windows, Virtual Pc-Check, Pc-Check UEFI Embedded Fixed Disk, Pc-Check UEFI Embedded BIOS, Pc-Check MultiMode, Pc-Check Console, ZeroData, ZeroData Windows, USB Preferred Port Plug, CDT, DVD, eTestManager, EuroDOS are trademarks of Eurosoft (UK) Ltd. All other product trademarks are recognised as belonging to their respective owners. REV080526S

**Note: Windows PE v1.x contains a security feature that will cause end user's systems to reboot without prior notification to the end user after 24 hours of continuous use. Windows PE v2.x contains a security feature that will cause end user's systems to reboot without prior notification to the end user after 72 hours of continuous use.**