



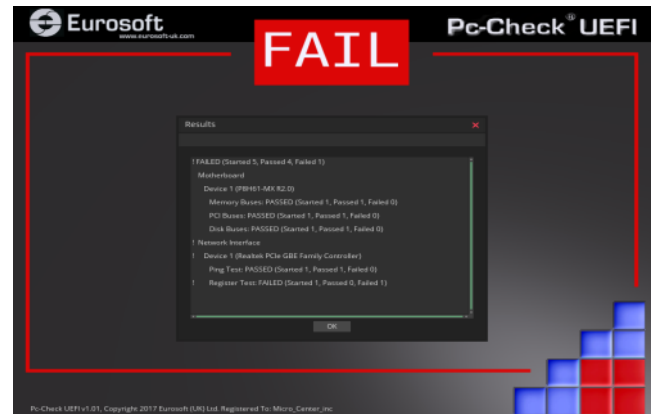


# Pc-Check® UEFI Diagnostic Software

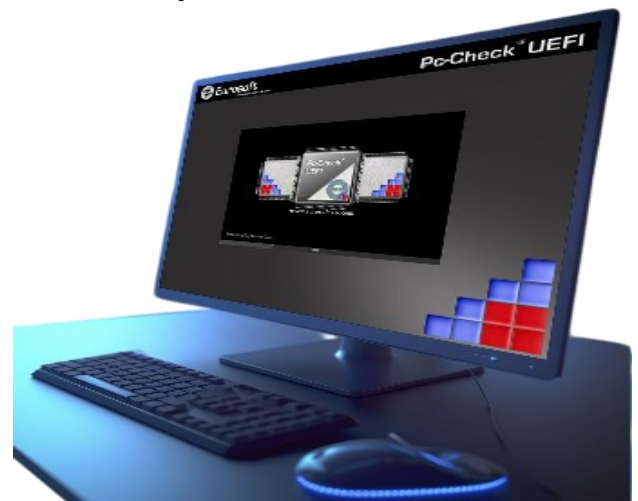
Your benefits using Pc-Check® UEFI + Arm® diagnostic software...

-  Pc-Check® UEFI and original Pc-Check® self-boot, are the **world's first independent pre-boot tools, since 1986. Arm® joined in 2026.**
-  **Fully compatible with UEFI hardware, 64Bit and Arm.** Unlike other so called "native" UEFI diagnostics, Pc-Check UEFI delivers direct, hardware testing regardless of BIOS or brand.
-  **Independently test hardware – no drivers –** directly accessing essential UEFI components. No operating system in the way – no Linux, no Windows, no secure boot or BIOS interference – only pure UEFI testing in real UEFI mode.
-  **Automatically,** pre-boot UEFI +Arm testing from one USB program device, penetrating diagnostics. Creates quick and stress tests without OS.
-  **Conveniently tests new and older systems—** Pc-Check UEFI mode, Arm and Pc-Check DOS-style, formidable, comprehensive diagnostics.
-  **Validate the PC & Arm products and services you sell,** support and service: servers, laptops, notebooks, desktops, embedded, industrial & rugged.
-  **Quality Reports:** All diagnostic tests recorded and presented as a professional, **proof-of-service report.** Certification with your name and conditions added as desired.
-  **Wide User Capability:** Full multi-featured diagnostics engages all levels of capabilities and user base across PC assembly, integration, services, installations, repair and refurbishing.
-  **Microsoft® digitally signed boot loader.** No reliance on 3rd party boot solutions like Linux. Maintain the 'chain of trust' and security.
-  **Maximize Profits, Cut Costs** with thorough testing — not just 'does it boot' — you increase the reliability of the PC hardware you build, upgrade, sell or service, dramatically **reducing costs stemming from problematic hardware, excessive returns, rework and repairs,** increasing overall PC reliability and customer satisfaction.

Unreliable testing of computers cost companies and technicians valuable time and money. Inaccurate test results impact operations, leading to more technical support calls, product returns, rework, and customer dissatisfaction. Proof-of-service and original build has become a requirement.



**The latest Pc-Check UEFI** includes Arm® option and original Pc-Check Self-boot — all you need to achieve fast, precise, pre-boot testing, for all kinds of PCs, systems and devices, regardless of brand. **Available in single and multi-user packages,** Pc-Check UEFI exclusive for embedded Fixed Media and BIOS options.



# Trust Pc-Check® UEFI + Arm and Self-boot diagnostic software... all parts core stressed... UEFI and legacy... Millions of reliable PCs...

**Test outside of operating systems with Pre-Booting UEFI diagnostics.** No concern of OS driver stack filtering or blocking commands. No concerns of OS modifying or redacting returned system information. No abstraction or virtualization of hardware.

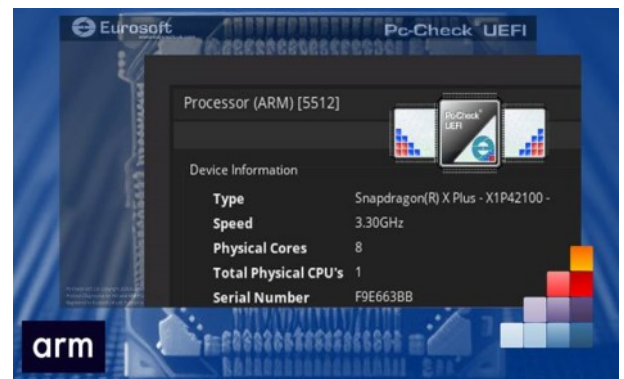
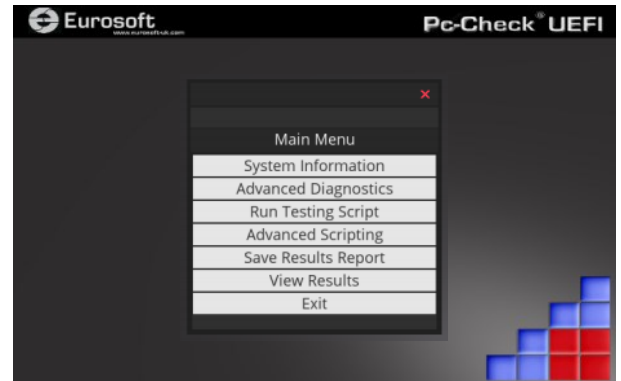
**Create and Automate Test Tools** — Create different diagnostic test routines for manufacture, refurbishing, service and support. UEFI testing can be started and scripted from a UEFI shell, allowing use alongside other third party UEFI tools.

**Scripting or selected: Component and Burn-in tests, Duration, any Number of passes**—Total control of your diagnostic process – you define the test requirements. Reveal hard-to-find intermittent errors. Proves working hardware.

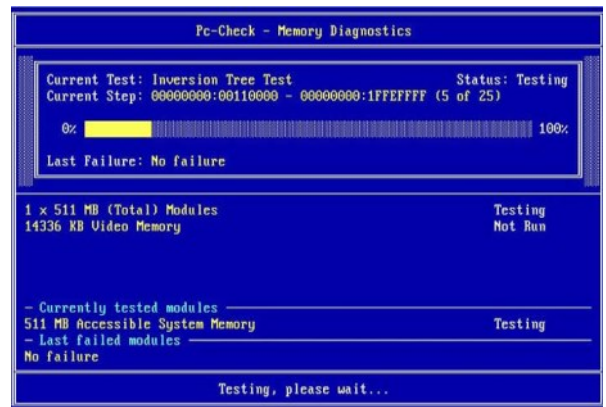
**Test the widest range of installed components and storage.** Identify the individual memory stick from 256 DIMM up to 2-Exabytes; and drives with 'Multi-Exabyte' sizes; plus CPU packages to 1024 under UEFI.

**Dual-boot, Multi-mode and Embedded testing options** — Pc-Check® UEFI + Arm & Pc-Check® combine for the ultimate bare metal testing with no OS on new UEFI and legacy PCs — a single package. Add Pc-Check® Windows for Multi-mode, 3-point testing in one test session. Effective embedded options for Fixed Disk

**Targeted testing**  
**Unlimited test scripts**  
**Legacy free, BIOS independent**  
**True UEFI + Arm 64 Bit tests**  
**By-pass Secure Boot**  
**No resource limitations**



**Original Self-boot Testing**  
**Non-Legacy capable**  
**32 Bit tests**



Test Examples:

**CPUs + Arm®, Memory, Internal Storage, Video RAM, USB Controller, USB Port, Battery, Network Interface, Graphic Card, Motherboard Components, Keyboard, mouse...**

## ➔ Computer Test Features - detailed comparison

**Identify hardware faults quickly, saving hundreds of man-hours in fault testing.**

**Control and contain errors.**

**Reveal hard-to-find intermittent errors.**

**Log faults and unreliable computers.**

**Test the bare hardware, no driver intervention.**

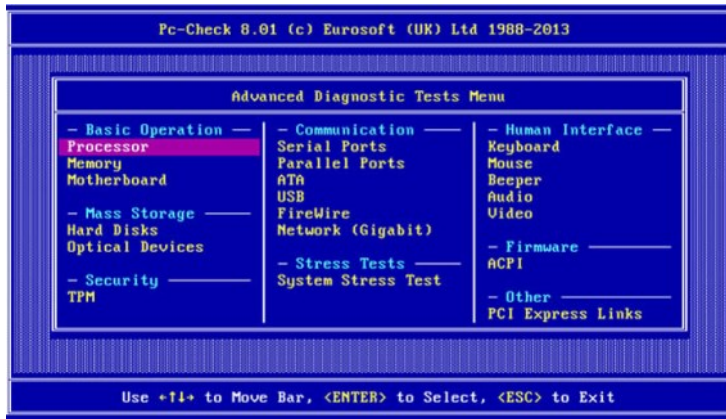
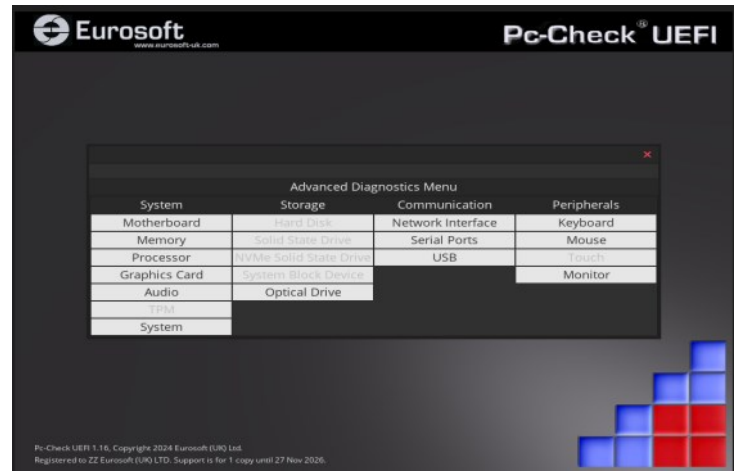
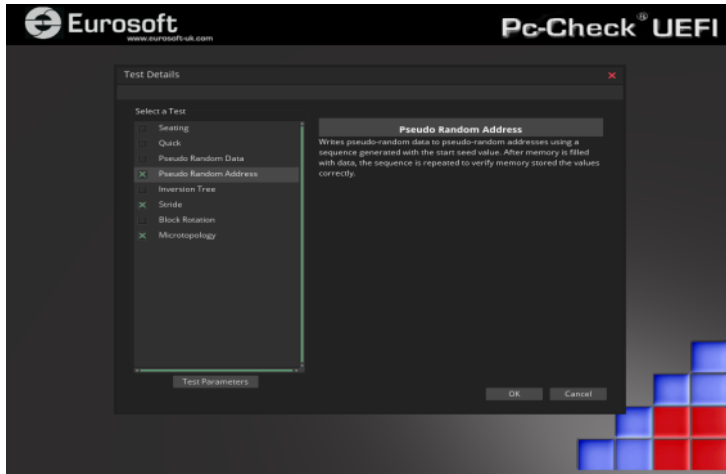
**Increase throughput by reducing human errors.**

**Standardized test scripts control unauthorized users and test usage.**

**Produce Proof-of-Service & Build reports to resolve customer doubts, increasing satisfaction.**

**Versatile variable user skill levels, gain professional results.**

# Pc-Check® UEFI + Arm® with original Pc-Check Self-boot, find the hardware faults that other test products can't or won't reveal.



Fully test non-legacy UEFI and legacy BIOS machines, giving you the latest industry support to reveal and validate UEFI PC & Arm.

### Test Accessories

Pc-Check Test Accessories extends testing to your PC ports. Engineered to work directly with the diagnostics, the Pc-Check Test Accessories maximize reliability.

## One USB device, three diagnostics possibilities

Containing both the Pc-Check UEFI, optional Arm and the acclaimed Pc-Check Self-boot diagnostic software,

the presence of UEFI Arm compliant or legacy hardware is automatically detected. If the system is a legacy device, Pc-Check will boot and execute; if the device is UEFI or Arm compliant, Pc-Check UEFI will boot and execute – even with secure boot turned on.

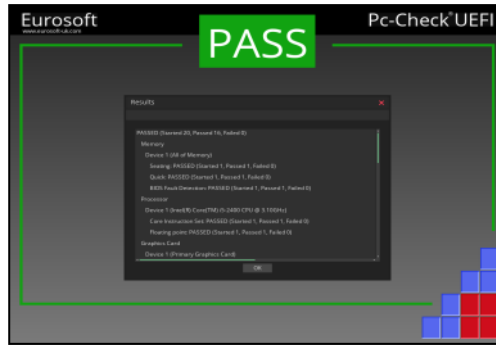
**Updates conveniently downloaded with Eurosoft's eTestManager.**

- USB Port Test Device**—Directly test USB ports with dedicated tests.
  - Network Loopback Plug**—Directly test network ports with dedicated tests.
  - USB A to USB C adaptor**— Supports PCs with USB C only ports.
  - USB Extender**—Extend the life of your USB Program Device.
  - Audio Test cable**—Directly test audio ports with dedicated tests.
  - Serial Loopback**—Directly serial ports with dedicated tests.
  - DVD Test Disc**—Directly test DVD drives with dedicated tests.
  - CDROM Test Disc**—Free CDROM burn instructions to directly test CDROM drives.
- Free Program Utility

# TEST RESULTS & REPORTS

Versatile results... displayed on screen at the end of testing as a message and a QR code. TXT and XML result output with utility provided for later retrieval of PDF logs. Testing reports include all test results and optional system information. Comprehensive system information; see everything included in the unit on the report from the diagnostic tests selected. Results, brandable for your service.

Pc-Check UEFI Service Report					
Pc-Check UEFI v1.15.0.0		Total Test Time		00:54:43	
Start Time		2024-07-25 07:39:26		Finish Time	
Type 1 Serial Number		190461030Ch			
Type 2 Serial Number		191861030Ch			
Overall Test Result: Passed					
Hardware Information Summary					
CPU	Intel(R) Core(TM) i5-6300U CPU @ 2.40GHz				
Memory	8 GB / Channel / DDR4				
SSD	S0CF18DC7F79AAAE7518C133C0D08B SAMSUNG MZVPV256HDGL-00000 256.0KGB				
Video Card	NVIDIA GeForce 940M				
Network	Realtek RTL8168E(L) PCI-E NFI Controller (10/100/1000 Mb/s)				
BIOS	HP BIOS				
Overall Tests					
Test Name	Test Started	Test Finished	Total	Test Results	
Memory	2024-07-25 07:39:26	2024-07-25 07:40:14	00:00:47	Passed	
Processor	2024-07-25 07:40:14	2024-07-25 07:41:23	00:01:09	Passed	
Graphics Card	2024-07-25 07:41:23	2024-07-25 07:42:10	00:00:47	Passed	
Network	2024-07-25 07:42:10	2024-07-25 07:43:57	00:01:47	Passed	
Hard Disk	2024-07-25 07:43:57	2024-07-25 07:43:58	00:00:01	Not Available	
Solid State Drive	2024-07-25 07:43:58	2024-07-25 07:43:59	00:00:01	Not Available	
NVMe Solid State Drive	2024-07-25 07:43:59	2024-07-25 07:44:00	00:00:01	Passed	
Network Interface	2024-07-25 07:44:00	2024-07-25 07:44:01	00:00:01	Not Available	
USB	2024-07-25 07:44:01	2024-07-25 07:44:58	00:00:57	Passed	
Serial Ports	2024-07-25 07:44:58	2024-07-25 07:44:59	00:00:02	Passed	



```

Report.txt - Notepad
File Edit Format View Help
-----
Pc-Check UEFI 1.15 Quality Assurance Report
-----
Machine Configuration
-----
System
Manufacturer: HP*
Product: HP EliteBook 850 G3*
Version: *
Serial Number: 5CG7516RSK*

Motherboard
Manufacturer: HP*
Product: 8079*
Version: KBC Version 85.79*
Serial Number: PFKZU00WBA9EKN*

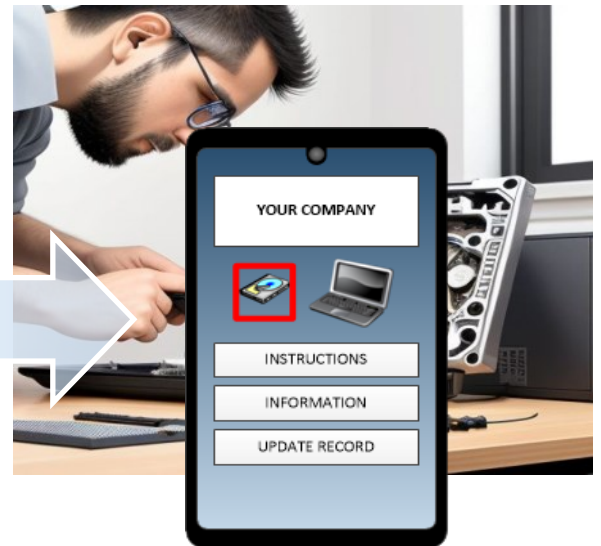
Bios
Vendor: HP*
Release: 07/28/2022*

Processor
Type: Intel(R) Core(TM) i5-6300U CPU @ 2.40GHz*
Speed: 2.49GHz
Physical CPUs: 1
Logical CPUs: 4
External Clock: 100MHz*
Max SSE Level: SSE4.2
Max AVX Level: AVX2

Memory
Installed: 8GB
Type: DDR4*
Form Factor: SODIMM*
ECC: No*
    
```

## QR CODES:

The QR codes (test/error results) are designed to capture the Pc-Check UEFI test result detail in real time. These QR code test descriptions are ready for your support team and customers, from your designated website/Cloud so you can host and store.



The benefit of QR codes is that they are accessible anywhere by simply scanning the code with a cell phone or mobile device. **Your end user or IT staff have immediate knowledge to convey an issue or read what to do next within the service process.**

With your inside knowledge of the PC/ ARM® system/devices you provide or service, you can **add product information or 'what to do next' instructions alongside the Pc-Check UEFI QR code.** You can change the language for end user requirements.

# Ready to try test and data erasure tools that support your business?

## Solutions for an ever changing landscape...

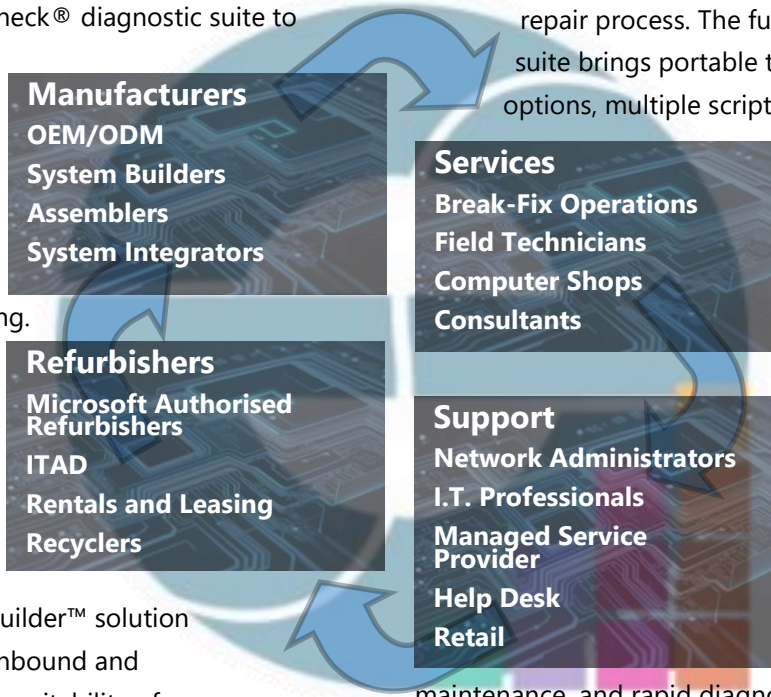
Computer manufacturing and system integrating rely on diagnostics to form standard test practices. Repair, services and support are blending with field technicians, backing MSP's who remotely manage all varieties of computers. Critical assessment of systems situated publicly: government, military, education, healthcare, as well as private verticals expect compliant, running systems. Refurbishing has taken off, extracting re-workable components to balance a broad eco-system, recycling where they can't. Everywhere, demand for reliably running PCs is required and expected.

**Manufacturing** and system integrating of all sizes, building new PCs of all kinds, use the PC Builder™ Test Management Suite and Pc-Check® diagnostic suite to validate hardware and configurations prior to investing time in loading operating system. Pc-Check UEFI Embedded during production adds essential remote testing before shipping.

**Refurbishing** for trade, re-manufacturing, repurposing, ITAD, and leasing PCs, use several tools. Portable Pc-Check® diagnostic suite and the PC Builder™ solution quickly and reliably validate inbound and outbound hardware assets for suitability of reuse, upgrading, re-imaging. Eurosoft's ZeroData™ Windows® storage drive erasure software is used in process or portably for secure and compliant data wiping.

**Servicing** has a wide commitment, bringing consumers and industry closer to the upgrading and repair process. The full Pc-Check® diagnostic suite brings portable testing with pre-boot options, multiple script creation, and recordation, reaching a variety of diverse PC customers. ZeroData™ Windows® offers portability and security to safely wipe customer PCs anywhere.

**Support** involves personal and remotely available technical sessions. Break-fix callouts and in-store warranty review, preventative maintenance, and rapid diagnosis to remediate downtime. Each Pc-Check® hardware diagnostic program gives fast and flexible hardware assessment. ZeroData™ Windows® securely clears data ensuring a variety of global compliance.



## Flexible user and licensing options to perfectly fit your costs and needs.

Eurosoft (UK) Ltd are dedicated to offering a variety of hardware diagnostic, test management and data erasure solutions as standalone packages, bundled with systems and services, as well as site licenses of all sizes. Commercially developed, and maintained to test and securely data wipe the widest range of PC-based hardware, regardless of brand. Whether you are responsible for 10, 1000 or 1million+ PCs or equally as many technicians, you won't find a more comprehensive collection of software tools to increase customer satisfaction and improve business operations.

## Contact us at the locations below to take advantage of a new testing experience today.

© Eurosoft (UK) Ltd. 1988-2026. Pc-Check is a registered trademark of Eurosoft (UK) Ltd. PC Builder, Pc-Check UEFI, Pc-Check Windows, Virtual Pc-Check, Pc-Check UEFI Embedded Fixed Disk, Pc-Check UEFI Embedded BIOS, Pc-Check MultiMode, Pc-Check Console, ZeroData, ZeroData Windows, USB Preferred Port Plug, CDT, DVDT, eTestManager, EuroDOS are trademarks of Eurosoft (UK) Ltd. All other product trademarks are recognised as belonging to their respective owners. REV080526RS. Note: Windows PE v1.x contains a security feature that will cause end user's systems to reboot without prior notification to the end user after 24 hours of continuous use. Windows PE v2.x contains a security feature that will cause end user's systems to reboot without prior notification to the end user after 72 hours of continuous use.



Eurosoft (UK) Ltd  
3 St. Stephen's Road  
Bournemouth,  
Dorset, BH2 6JL  
United Kingdom

[www.eurosoft-uk.com](http://www.eurosoft-uk.com)  
Tel: +44 (0)1202 297315

**Globally established, since 1980**

Eurosoft (US) Inc.  
2635 S Palmetto St.  
Sioux City, IA 51106  
USA

[www.eurosoft-us.com](http://www.eurosoft-us.com)  
Tel: +1 (712) 255 7483