



Pc-Check® MultiMode™


MultiMode option unites Pc-Check UEFI with Pc-Check Windows to run together on a single USB... multiple test environments, in one testing session, with one unified report.


 **MultiMode** unifies your hardware testing, delivering Pc-Check UEFI and Pc-Check Windows diagnostics, balancing the widest test cover with two environments, all as one smooth session.


Pc-Check UEFI is the answer to solving your testing dilemmas outside the installed operating system. Whether Linux or Windows, Pc-Check UEFI **runs in native UEFI allowing direct access to PC hardware.**

Pc-Check® Windows® has a testing advantage with Windows-based computers. Fully **compatible with Windows 11** and UEFI hardware, booting WinPE, ensuring components are reliably validated in the environment in which they are used.

 **Leverage Environments — MultiMode** bolsters pre-boot testing with Pc-Check UEFI, fully testing all memory, transitioning seamlessly between Pc-Check Windows, full multi-threaded stress testing with device driver support.

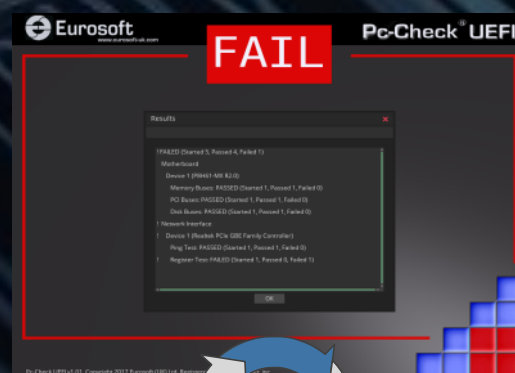
 **Test Deeper — MultiMode** gives you comprehensive testing, validating all components inside and outside of Windows.

 **MultiMode** combines the testing results of both test sessions into one combined report, your full diagnostic validation executed from multiple testing environments, all captured into a single report.

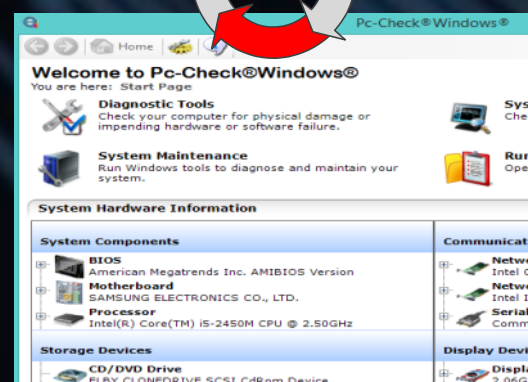
 **MultiMode** testing approach is the fastest way to separate operating system issues from faulty hardware, giving you the best of both worlds.

Unreliable testing of computers cost companies and technicians valuable time and money. Inaccurate test results impact operations, leading to more technical support calls, unnecessary rework, product returns and customer dissatisfaction. Proof of build and service has now become a requirement.

The latest Pc-Check UEFI is all you need to achieve fast, precise, pre-boot testing, for all kinds of PCs, systems and devices, plus the latest Pc-Check Windows is all you need to achieve the widest stress testing available, for all kinds of PCs, systems and devices, running WinPE or Windows — regardless of brand.



Run one in sequence with the other



MultiMode™ has the advantage of delivering balanced Pre-Boot + Windows-based tests to fully validate UEFI enabled components.



Fully UEFI hardware testing capable, Pc-Check® MultitMode balances time and testing. Pc-Check® UEFI and Windows tools provide a dual-testing advantage, two tools on one USB, smoothly testing both inside and outside the operating system — informative results as one report. Unlike other so called "native" UEFI diagnostics, Pc-Check UEFI delivers **direct, legacy free hardware testing regardless of BIOS.** Pc-Check Windows sets the stress-testing scene ensuring Windows product readiness across all components.

**690 + Tests
70 Test Groups
Unlimited Scripting**



Boot USB

Computer Test Features - detailed comparison

Test the bare hardware, no driver intervention.

Powerful, testing under Microsoft® Windows® 11 (& EOL 10).

Test UEFI enabled hardware in Windows®.

Integrate 3rd party UEFI tools.

Scripted or selected: Quick test, System Stress test and Burn-in test, Duration, any Number of passes.

Customize image settings for image type, region, and more.

Unattended testing, launch scripts automatically, upon startup. Unlimited scripts.

Create, and test PCs, including Intel-based Macs from self-booting WinPE media.

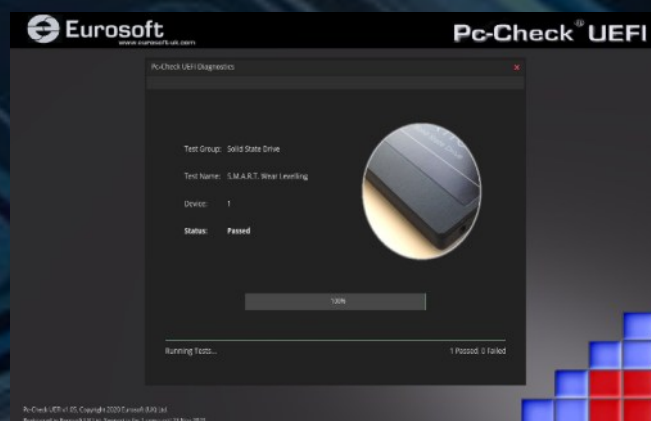
Verify Windows 11 Readiness for new and ITAD processing.

Custom grading, scores assets to your specification.

Autopilot detection reveals UEM enrollment to stop ITAD distribution of prior user connections.

Identify hardware faults quickly, saving hundreds of man-hours in fault testing.

Produce Proof-of-Service & Build reports to resolve customer doubts, increasing satisfaction.



Native UEFI diagnostics



Windows® and WinPE® diagnostics

View Session Log		
Results Summary	Time	General Information
Failures: 0	Started: 2:22:12 PM	
Passes: 15	Ended: 2:22:58 PM	
Others: 13	Total: 00:00:46	
Total: 28		
Test Results		
Group-Device-Test	Result	
Intel(R) Core(TM) i5-2450M CPU @ 2.50GHz-Multi-core	PASSED	
Intel(R) Core(TM) i5-2450M CPU @ 2.50GHz-Multi-processor	INAPPLICABLE	
Intel(R) Core(TM) i5-2450M CPU @ 2.50GHz-Core Priority	PASSED	

Testing summary

Pc-Check® MultiMode — UEFI and Pc-Check® Windows® find hardware faults that other test products can't *or won't* reveal.

Giving you the latest tests supported by industry and customer challenges, you can count on the combined Pc-Check UEFI and Pc-Check Windows to smooth processes, reveal issues and validate reliability 32Bit and 64Bit UEFI PC hardware with state-of-the-art diagnostics that solve testing dilemmas.

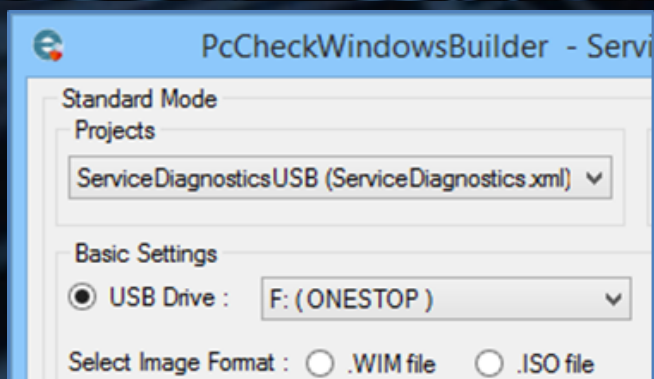
One USB device, Two critical testing tools One united solution

Acclaimed Pc-Check UEFI and the successful Pc-Check Windows diagnostic software. All you need to achieve highly reliable hardware, using native-UEFI, stress and burn-in testing to reveal consequential and intermittent errors.



WinPE Image Creator application prepares custom, self-booting WinPE test media. Unlimited script and image builds.

Updates conveniently downloaded with Eurosoft's eTestManager.



Test Accessories

Pc-Check Test Accessories extends testing to your PC ports. Engineered to work directly with the diagnostics, the Pc-Check Test Accessories maximize testing reliability.



USB Port Test Device—Directly test USB ports with dedicated tests.



Network Loopback Plug—Directly test network ports with dedicated tests.



USB A to USB C adaptor— Supports PCs with USB C only ports.



USB Extender—Extend the life of your USB Program Device.



Audio Test cable—Directly test audio ports with dedicated tests.



Serial Loopback—Directly serial ports with dedicated tests.



DVD Test Disc—Directly test DVD drives with dedicated tests.

Free
Program
Utility

CDROM Test Disc—Free CDROM burn instructions to directly test CDROM drives.

Test results & Reports

- Proof-of-Service reports with your brand, detail and prove your testing.
- Print or store, reports provide recordation of every test job.
- QR code and a description for easy scan access to present as an end user to a technician. A URL is all that's required to point the QR code to your website.

Failure: Solid State Drive, S.M.A.R.T. Immediate, Device 1



<https://www.eurosoft-uk.com/support/403-solid-state-drive/>

Pc-Check Windows Service Report

Time	2024-08-28-12-43	Machine	Lenovo H50-55
Test Script Name	N/A	Total Test Time	N/A
Start Time	N/A	Finish Time	N/A
Type 1 Serial Number	90BG0002US/R3003854		
Type 2 Serial Number	Bantry CRB/R3003854		
Overall Test Result	Not Run		
System Information Summary			
Operating System	Windows (TM) 10 Preinstallation Environment x64		
Operating System Version	6.3.22621.0		
Install Date	NULL		
BIOS Version	IRKT35AUS (UEFI, Secure Boot Disabled)		
Hardware Information Summary			
CPU	AMD A10-7800 Radeon R7, 12 Compute Cores 4C+8G		
Memory	6.93 GB/8.00 GB (1/2 Slots)		
Memory Slot 1	Empty		
Memory Slot 2	8.00 GB/DIMM 1/CHANNEL B/Hynix/Hyundai/DDR3		
Video Card	Kaveri [Radeon R7 Graphics] Lenovo		
Optical Drive	HL-DT-ST DVD-RAM GHB0N JE01		
Mother Board	LENOVO		
LAN	Realtek(R) PCI(e) Ethernet Controller		
LAN	NULL		

Results Summary

Results Summary

Overall Tests	Test Started	Test Finished	Total	Test Results
Network Adapter	7/27/2021 8:06:07 AM	7/27/2021 8:07:44 AM	00:01:37	PASSED
USB	7/27/2021 8:08:28 AM	7/27/2021 8:10:51 AM	00:02:23	PASSED
Serial Port	7/27/2021 8:11:56 AM	7/27/2021 8:14:22 AM	00:02:26	PASSED
USB	1/1/1970 12:00:00 AM	7/26/2021 5:07:57 PM	452033:07:57	PASSED
Serial Ports	1/1/1970 12:00:00 AM	7/26/2021 5:14:06 PM	452033:14:06	PASSED
Processor	1/1/1970 12:00:00 AM	7/26/2021 4:24:40 PM	452032:24:40	PASSED
Optical	1/1/1970 12:00:00 AM	7/26/2021 4:41:32 PM	452032:41:32	PASSED
Solid State Drives	1/1/1970 12:00:00 AM	7/26/2021 4:50:43 PM	452032:50:43	PASSED
Motherboard	1/1/1970 12:00:00 AM	7/26/2021 4:22:37 PM	452032:22:37	PASSED
System Block Device	1/1/1970 12:00:00 AM	7/26/2021 4:50:46 PM	452032:50:46	NOT AVAILABLE
NVMe Drives	1/1/1970 12:00:00 AM	7/26/2021 4:50:51 PM	452032:50:51	NOT AVAILABLE
TPM	1/1/1970 12:00:00 AM	7/26/2021 4:24:41 PM	452032:24:41	NOT AVAILABLE
Memory	1/1/1970 12:00:00 AM	7/26/2021 4:24:23 PM	452032:24:23	PASSED
Network	1/1/1970 12:00:00 AM	7/26/2021 4:50:53 PM	452032:50:53	PASSED
Hard Drives	1/1/1970 12:00:00 AM	7/26/2021 4:36:29 PM	452032:36:29	FAILED
Memory	7/27/2021 8:14:27 AM	7/27/2021 8:26:02 AM	00:11:35	PASSED



Please click the Abort button at any time to stop the tests.		Status
Summary		TESTING
Last Device Failed:	None	
Total Percentage:	50%	
Total Time:	00:00:36	
Current Test Information		Next Tests
NVMe Drive		Idle Temperature
		Instantaneous Temperature
Idle Temperature		Next Devices
Test Time: 00:00:00		KBG40ZNS256G TOSHIBA MEMORY
NVMe Drive - KBG40ZNS256G TOSHIBA MEMORY		
DriveLetter: C		
Capacity: 256 GB		

Ready to try test and data erasure tools that support your business?

Solutions for an ever changing landscape...

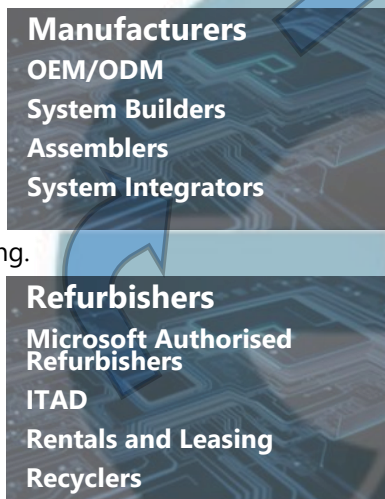
Computer manufacturing and system integrating rely on diagnostics to form standard test practices. Repair, services and support are blending with field technicians, backing MSP's who remotely manage all varieties of computers. Critical assessment of systems situated publicly: government, military, education, healthcare, as well as private verticals expect compliant, running systems. Refurbishing has taken off, extracting re-workable components to balance a broad eco-system, recycling where they can't. Everywhere, demand for reliably running PCs is required and expected.

Manufacturing and system integrating of all sizes, building new PCs of all kinds, use the PC Builder™ Test Management Suite and Pc-Check® diagnostic suite to validate hardware and configurations prior to investing time in loading operating system. Pc-Check UEFI Embedded during production adds essential remote testing before shipping.

Refurbishing for trade, re-manufacturing, repurposing, ITAD, and leasing PCs, use several tools. Portable Pc-Check® diagnostic suite and the PC Builder™ solution quickly and reliably validate inbound and outbound hardware assets for suitability of reuse, upgrading, re-imaging. Eurosoft's ZeroData™ Windows® storage drive erasure software is used in process or portably for secure and compliant data wiping.

Servicing has a wide commitment, bringing consumers and industry closer to the upgrading and repair process. The full Pc-Check® diagnostic suite brings portable testing with pre-boot options, multiple script creation, and recordation, reaching a variety of diverse PC customers. ZeroData™ Windows® offers portability and security to safely wipe customer PCs anywhere.

Support involves personal and remotely available technical sessions. Break-fix callouts and in-store warranty review, preventative maintenance, and rapid diagnosis to remediate downtime. Each Pc-Check® hardware diagnostic program gives fast and flexible hardware assessment. ZeroData™ Windows® securely clears data to ensure GDPR compliance.



Flexible user and licensing options to perfectly fit your costs and needs.

Eurosoft (UK) Ltd are dedicated to offering a variety of hardware diagnostic, test management and data erasure solutions as standalone packages, bundled with systems and services, as well as site licenses of all sizes. Commercially developed, and maintained to test and securely data wipe the widest range of PC-based hardware, regardless of brand. Whether you are responsible for 10, 1000 or 1million+ PCs or equally as many technicians, you won't find a more comprehensive collection of software tools to increase customer satisfaction and improve business operations.

Contact us at the locations below to take advantage of a new testing experience today.

© Eurosoft (UK) Ltd. 1988-2025. Pc-Check is a registered trademark of Eurosoft (UK) Ltd. PC Builder, Pc-Check UEFI, Pc-Check Windows, Virtual Pc-Check, Pc-Check UEFI Embedded Fixed Disk, Pc-Check UEFI Embedded BIOS, Pc-Check MultiMode, Pc-Check Console, ZeroData, ZeroData Windows, USB Preferred Port Plug, CDT, DVDIT, eTestManager, EuroDOS are trademarks of Eurosoft (UK) Ltd. All other product trademarks are recognised as belonging to their respective owners. REV140225SRK. Note: Windows PE v1.x contains a security feature that will cause end user's systems to reboot without prior notification to the end user after 24 hours of continuous use. Windows PE v2.x contains a security feature that will cause end user's systems to reboot without prior notification to the end user after 72 hours of continuous use.



Eurosoft (UK) Ltd
3 St. Stephen's Road
Bournemouth,
Dorset, BH2 6JL
United Kingdom

Globally established, since 1980

www.eurosoft-uk.com
Tel: +44 (0)1202 297315

Eurosoft (US) Inc.
2635 S Palmetto St.
Sioux City, IA 51106
USA

www.eurosoft-us.com
Tel: +1 (712) 255 7483