

Pc-Check® Windows® V3.5.3.0006

As the hardware requirements for Microsoft Windows 11 continues, we will adjust the Windows 11 Readiness feature in [Pc-Check Windows](#) – a great place to start and finish when comparing and validating new builds, upgrades and re-manufactured systems and devices. As always, there are CPU enhancements with NVIDIA, AMD and Intel. Specific to Intel, the Thermal Junction Maximum will test for reduction in performance.

Pairing & Sharing... If your dream is to have single-session testing with both Pc-Check® Windows® + Pc-Check® UEFI, the latest [MultiMode™](#) tool combines integrated testing with/without an OS, pinpointing failures from one USB program device, stress testing and targeted component testing without the OS, as one uncomplicated diagnostic process.

Take a look at all the [Pc-Check diagnostic suite diagnostics test groups and features](#) here.

Awesome reminders, only Eurosoft do these...

Test more memory than other Windows-based diagnostic tools – Unlimited DIMM reporting 512Gb (W8.1) to **1TB memory** (W10, 64Bit); and **2-Exabyte drives**; **256 core CPU** packages, video, and UEFI enabled hardware.

1st place – Longest running diagnostic company – 40+ years – with spectacular results from the first-on-the-scene **Microtopology** memory testing, and our original 'self-boot' capability in 1986!

Pc-Check® Windows® features

Benefits for You

Updated CPUID

Improved processor testing. Support added for NVIDIA RTX 5090 & 5080 GPUs. AMD Ryzen 9 9955HX3D, 9955HX, 9950HX3D, 9950HX, 9850HX, 9845HX (Fire Range).

Enhanced Processor testing

Support added to identify the processor Thermal Junction Maximum, for Intel processors. The temperature at which a processor will start to reduce performance to cool down.

Updated Windows 11 test

Confirms PC system/devices are ready for Microsoft Windows® 11 installation, as well as ensuring your chosen PC hardware meets system requirements before upgrading hardware and operating systems.

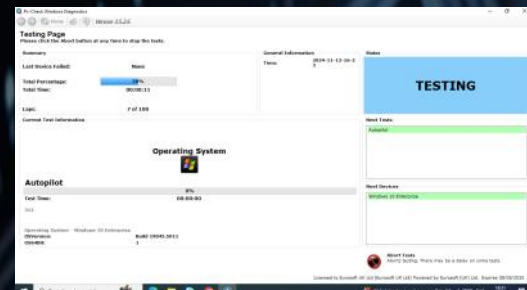
Updated Test scripts and parameters

Test scripts updated to reflect the best use of test time and product enhancements. For example Multi threading parameter during memory testing or adding the GPU driver crash test to the default full test Script.

Please contact us if you require 32bit Windows 7 testing options.

Product Announcement Pc-Check® Windows®

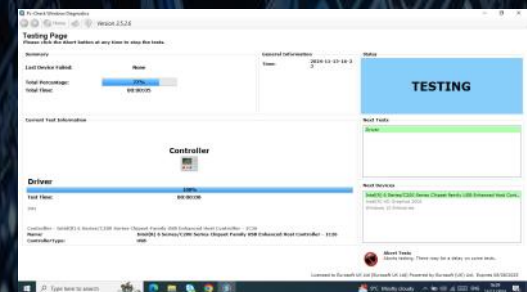
Autopilot Test



Windows® Compatibility



Controller Group



Like what you see?

Combine [Pc-Check® UEFI](#) and [Pc-Check®](#), the ultimate bare metal testing solution with [Pc-Check® Windows®](#), expanding your range of diagnostics to a perfect 3-point test plan.

FREE Updates and technical support provided automatically for one year. Keep your hardware testing methods current. Upgrade to the latest version of **Pc-Check® Windows®**

ALL FEATURED UPDATES

www.eurosoft-uk.com

Previous Release Highlights

Intelligent scan test	Now testing by total hard drive size instead of sectors. Provides greater compatibility with bigger hard drives that use larger 4k sectors.
Processor testing	Support added to identify the processor Thermal Junction Maximum, the temperature at which a processor will start to reduce performance to cool down.
Processor testing parameters	Processor instruction set tests now have test parameter 1 Duration. By default this is set to 10 seconds to ensure the test are run quickly.
Audio testing	In the event of a unit under test without audio endpoints (Line in, mic or line out) audio cards will still be enumerated, however tests will not be available.

Combine Pc-Check® UEFI and original Pc-Check® Self-boot for the ultimate 'bare-metal' testing solution alongside Pc-Check® Windows®, expanding your range of diagnostics to a perfect 3-point test plan.

////////////////////////////////////

Developing intricate computer diagnostic software – *because other hardware tests miss them completely* – Pc-Check® Windows® is indispensable. Count on a continued flow of reliable test results whether building, installing, supporting or servicing computers. Pc-Check® Windows® offers the greatest support for testing a multitude of new or legacy devices both pre-boot WinPE or full Windows operating system.

Eurosoft has helped to find millions of computer failures since 1980. No exaggeration! Celebrating 40+ years — with success from our exceptional customers.

NOTE: *WinPE has reduced driver support limiting its test function. The full Windows operating system is required for certain device driven hardware.

Eurosoft (UK) Ltd
Tel +44 (0)1202 297315
www.eurosoft-uk.com

Eurosoft (US) Inc.
Tel +1 (712) 255-7483
www.eurosoft-us.com

SEND US YOUR IDEAS....

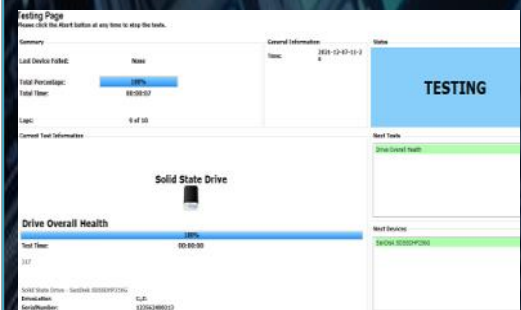
[Support and Feature Requests](#)

Product Announcement Pc-Check® Windows®

System Scoring

What condition is the case in?	Perfect Condition	2.00
What condition is the screen in?	Perfect Condition	2.00
Are there any stickers or residue on the case?	No Marks	2.00
Are the hinges functional?	Yes	2.00
Are there any pieces of the chassis or case missing?	No	0.00
Are there any other accessories missing?	No	0.00
How many USB Ports are there?	3	1.50
How many HDMI Ports are there?	1	0.50
Functional RAM reader?	No	0.00
Do the buttons all work as intended?	Yes	2.00
Keyboard backlight either not present or working?	Yes	2.00
Is the BIOS password locked?	No	0.00
Does the system come with the factory restore media or	No	0.00
Are OEM Parts in the system?	Yes	2.00
Does the system come with a lock?	Yes	2.00
Is the power adapter included?	Yes	1.00
User manual included?	No	0.00
Overall Score		12.00

Overall Drive Health



Diagnostics out of date? Other tools not meeting your demands? Call us to discuss your testing needs. Visit our website to order all the Pc-Check® diagnostic suite at any time. Site licenses, special development and quantity discounts available. DATA ERASURE — ZeroData™ Windows® is ready for you.



© Eurosoft (UK) Ltd. 1988-2025. Pc-Check is a registered trademark of Eurosoft (UK) Ltd. PC Builder, Pc-Check UEFI, Pc-Check Windows, Pc-Check Virtual Pc-Check, ZeroData, ZeroData Windows, USB Preferred Port Plug, CDT, DVDIT, EuroDOS are trademarks of Eurosoft (UK) Ltd. All other product trademarks are recognised as belonging to their respective owners. REV070525KH

Note: Windows PE v1.x contains a security feature that will cause end user's systems to reboot without prior notification to the end user after 24 hours of continuous use. Windows PE v2.x contains a security feature that will cause end user's systems to reboot without prior notification to the end user after 72 hours of continuous use.