

## Pc-Check® Windows® V3.5.2.6

**System Builders and Refurbishers, try the updated Windows 11 compatibility test along with your other chosen diagnostics to present a complete report of just how Windows-ready your systems/devices are.** The new Autopilot test quickly determines if a PC is already enrolled with Microsoft Autopilot – advance notice saves time and hassle before sending out devices, only to be returned because they weren't disconnected. Finally, nailed down that RAID controller ID test so all installed are shown on the test report. NOTICE: testing under Windows 7 is removed from this release, making room for the more current testing under Windows 10 and 11. Please let us know if you need this Windows 7 testing and we will update you.

Please continue to use the online eTestManager to add program updates and license terms to each of your Eurosoft USB program devices. Contact the Support or Sales team for assistance.

## Awesome reminders, only Eurosoft do these...

**Test more memory than other Windows-based diagnostic tools** – Unlimited DIMM reporting 512Gb (W8.1) to **1TB memory** (W10, 64Bit); and **2-Exabyte drives; 256 core CPU** packages, video, and UEFI enabled hardware.

**1<sup>st</sup> place** – Longest running diagnostic company – 40+ years – with spectacular results from the first-on-the-scene **Microtopology** memory testing, and our original 'self-boot' capability in 1986!

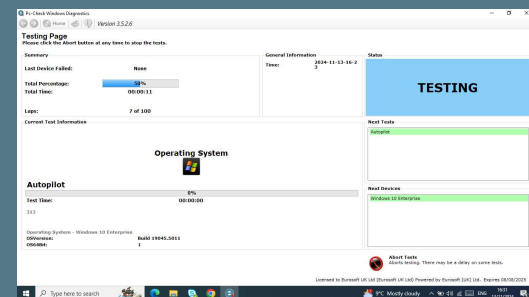
### Pc-Check® Windows® features

Benefits for You	
<b>New Autopilot Test</b>	Easily determine if the unit under test has already been enrolled with Microsoft Autopilot.
<b>New Controller Group</b>	Quickly identify and perform driver tests for RAID, Standard SATA AHCI, HD Audio, USB 3.0 eXtensible, Chipset Family USB Enhanced Host, Fixed and Wireless Network and Graphics controllers that are present in each system.
<b>Enhanced Windows 11 Compatibility Test</b>	Confirms PC system/devices are ready for Microsoft Windows® 11 installation, as well as ensuring your chosen PC hardware meets system requirements before upgrading hardware and operating systems.
<b>Updated CPUID information</b>	Improved support of AMD Strix Point (including GPU). AMD Granite Ridge/Strix Point memory p-states. Improved support of Intel Arrow Lake clock multiplier granularity. Intel Core Ultra 5 235, 225 & 225F (Arrow Lake). Intel Core i9 14901KE & 14901E, Core i7 14701KE, Core i5 14501E & 14401E/F (Raptor Lake).

Please contact us if you require **32bit Windows 7 testing options.**

## Product Announcement Pc-Check® Windows®

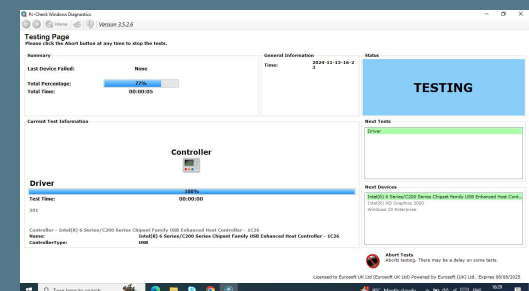
### Autopilot Test



### Windows® Compatibility



### Controller Group



*Like what you see?*

Combine **Pc-Check® UEFI** and **Pc-Check®**, the ultimate bare metal testing solution with **Pc-Check® Windows®**, expanding your range of diagnostics to a perfect 3-point test plan.

FREE Updates and technical support provided automatically for one year. Keep your hardware testing methods current. Upgrade to the latest version of **Pc-Check® Windows®**

### ALL FEATURED UPDATES

[www.eurosoft-uk.com](http://www.eurosoft-uk.com)

## Previous Release Highlights

Support for 16GB Program Devices and Preferred Port Plug USB test devices	USB test and program devices now supplied as larger capacity 16GB device. Allows you store more test reports and logs than before.
Network adaptor identification	Network enumeration now makes it easy to identify non testable network adaptors by using a different device code compared to testable network adaptors.
Keyboard testing	Added keyboard templates for coverage of even more keyboard designs/layouts.
Predefined script updates	Updated predefined test scripts to add coverage for testing all components of 2 in 1 machines and laptops.

Combine Pc-Check® UEFI and original Pc-Check® Self-boot for the ultimate 'bare-metal' testing solution alongside Pc-Check® Windows®, expanding your range of diagnostics to a perfect 3-point test plan.



**Developing intricate computer diagnostic software – *because other hardware tests miss them completely* – Pc-Check® Windows® is indispensable.** Count on a continued flow of reliable test results whether building, installing, supporting or servicing computers. Pc-Check® Windows® offers the greatest support for testing a multitude of new or legacy devices both pre-boot WinPE or full Windows operating system.

**Eurosoft has helped to find millions of computer failures since 1980. No exaggeration! Celebrating 40+ years — with success from our exceptional customers.**

NOTE: \*WinPE has reduced driver support limiting its test function. The full Windows operating system is required for certain device driven hardware.

**Eurosoft (UK) Ltd**  
 Tel +44 (0)1202 297315  
 www.eurosoft-uk.com

**SEND US YOUR IDEAS....**

**Eurosoft (US) Inc.**  
 Tel +1 (712) 255-7483  
 www.eurosoft-us.com

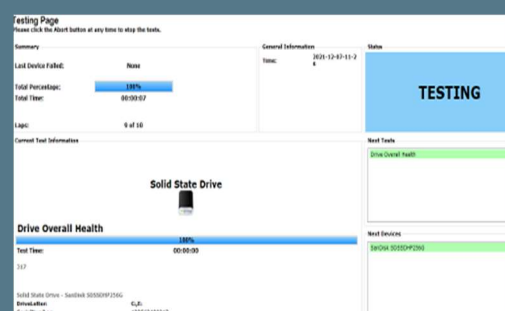
[Support and Feature Requests](#)

## Product Announcement Pc-Check® Windows®

### System Scoring

What condition is the case in?	Preferred Condition	Score
What condition is the screen in?	Preferred Condition	2.00
Are there any stickers or residue on the case?	No Marks	2.00
Are the hinges functional?	Yes	2.00
Are there any pieces of the chassis or case missing?	No	0.00
Are there any other accessories missing?	No	0.00
How many USB Ports are there?	3	1.50
How many HDMI Ports are there?	1	0.50
Functional S/M reader?	No	0.00
Do the buttons all work as intended?	Yes	2.00
Keyboard backlight either not present or working?	Yes	2.00
Is the BIOS password locked?	No	0.00
Does the system come with the factory restore media or	No	0.00
Are OEM Parts in the system?	Yes	2.00
Does the system come with a box?	Yes	2.00
Is the power adapter included?	Yes	1.00
User manual included?	No	0.00
	No	0.00

### Overall Drive Health



Diagnostics out of date? Other tools not meeting your demands? Call us to discuss your testing needs. Visit our website to order all the Pc-Check® diagnostic suite at any time. Site licenses, special development and quantity discounts available. DATA ERASURE — ZeroData™ Windows® is ready for you.



© Eurosoft (UK) Ltd. 1988-2024. Pc-Check is a registered trademark of Eurosoft (UK) Ltd. PC Builder, Pc-Check UEFI, Pc-Check Windows, Pc-Check Virtual Pc-Check, ZeroData, ZeroData Windows, USB Preferred Port Plug, CDT, DVD/CD, EuroDOS are trademarks of Eurosoft (UK) Ltd. All other product trademarks are recognised as belonging to their respective owners. REV280524KH

Note: Windows PE v1.x contains a security feature that will cause end user's systems to reboot without prior notification to the end user after 24 hours of continuous use. Windows PE v2.x contains a security feature that will cause end user's systems to reboot without prior notification to the end user after 72 hours of continuous use.