

Pc-Check® UEFI v1.15

NEW RELEASE... Enhancements – a few improvements to keep you all happy. Insider information for all those embedded industrial systems, now you can test the headless capability and check if the PC can wake (or not) from a LAN. Seeking more stress testing action, the troublesome Time Stamp Counter that was causing memory and CPU failures on certain hardware has a work around. Notable for PCI improvements, easily check and report on whether a PCI device is detected plus you can now see the sub-vendor for video cards in the System Information Log. Finally, welcome to a larger USB 16GB capacity so you can save even more test reports.

Remember too, you always get Pc-Check® Self-boot included with your Pc-Check® UEFI for alternative legacy testing. Read on...

Awsome reminders, only Eurosoft do these...

Pc-Check UEFI diagnostics identify your hardware failures – **precisely**. Unlike other so called UEFI diagnostics, Pc-Check® UEFI diagnostics directly access and test essential UEFI components, regardless of BIOS or brand. **NO operating system in the way – NO Linux, NO Windows, NO secure boot issues – only UEFI testing in pure native mode.**

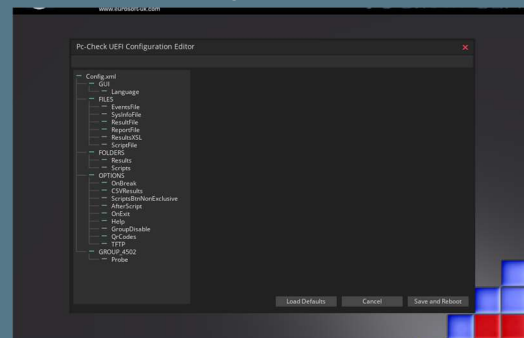
Test more memory, drives and CPUs like no other diagnostic tool – remarkable **256 DIMM up to 2-Exabytes memory**, and **'Multi-Exabyte' drives**, plus **1024 'Kilo-core' CPU packages** and *more tests coming...*

1st place – Longest running diagnostic company – 40 years – with spectacular results from our Micro-topology memory testing, and the original 'self-boot' capability in 1986!

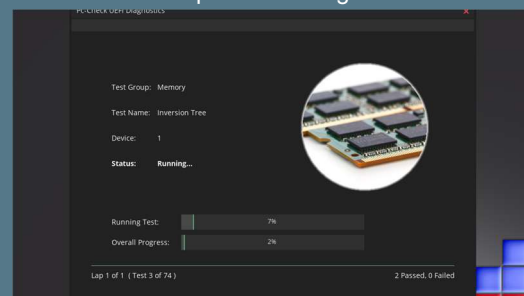
Pc-Check® UEFI Features	Benefits for You
New Support for 16GB Program Devices and Preferred Port Plug USB test devices	USB test and program devices now supplied as larger capacity 16GB device. Allows you store more test reports and logs than before.
Enhanced System Group information	Now including information from ACPI configuration such as whether the system is declared head-less or can wake from LAN. Also easily see all the PCI devices detected in a system by viewing the System Information Log.
Enhanced PCI information	PCI sub-vendor information given for video card, on screen and in System Information Log.
Enhanced System Stress Test	Improved compatibility with specific systems that caused almost immediate CPU or memory failures due to unstable Time Stamp Counter (TSC) behavior. Also includes the ability to test all CPU cores when the memory component of the stress test is not included.

Product Announcement Pc-Check® UEFI

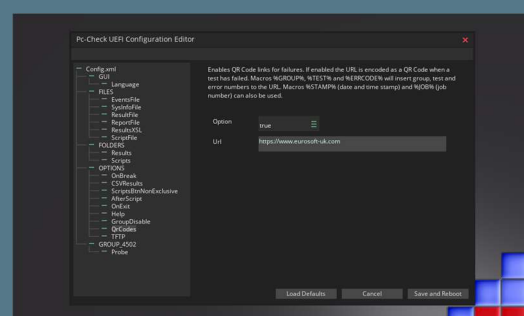
Configuration Editor



Script & Test Progress



QR Code Configuration



Like what you see?

Combine **Pc-Check® UEFI** and **Pc-Check®**, the ultimate bare metal testing solution with **Pc-Check® Windows®**, expanding your range of diagnostics to a perfect 3-point test plan.

FREE Updates and technical support provided automatically for one year. Keep your hardware testing methods current. Upgrade to the latest version of **Pc-Check UEFI**

ALL FEATURED UPDATES

www.eurosoft-uk.com

Eurosoft (UK) Ltd
Tel +44 (0)1202 297315
Fax: +44 (0)1202 558280
www.eurosoft-uk.com

Eurosoft (US) Inc.
Tel +1 (712) 255-7483
Fax: +1 (866) 615-9384
www.eurosoft-us.com

Previous release highlights

Feature	Benefits for you
Configuration editor	Easily make changes to the config.xml when prompted during start up, using a built-in graphical interface rather than using a text editor to change the file manually. Optionally hide the editor prompt or specific editor options.
Reporting	Add user defined values to reports. These can include device attributes such as serial numbers, or to show the testers name, or that a physical inspection of a system has been done.
Onscreen testing display	When using a test script, dual progress bars now show the total progress of the script in addition to the progress of the current test, helping to gauge remaining test processing.
Start up behavior	Get testing faster than before with quicker start up speeds and faster script loading.
PCI device database update	Easily identify and test the latest PCI devices.

Including the original Pc-Check® Self-boot, Pc-Check UEFI offers the ultimate 'bare-metal' testing solution.

Combine Pc-Check® Windows, expanding your range of diagnostics to a perfect 3-point test plan.



Developing intricate computer diagnostic software – because other hardware tests miss them completely – Pc-Check UEFI is indispensable. Count on a continued flow of reliable test results whether building, installing, supporting or servicing computers. Pc-Check UEFI offers the greatest support for testing a multitude of new or legacy devices outside of the operating system.

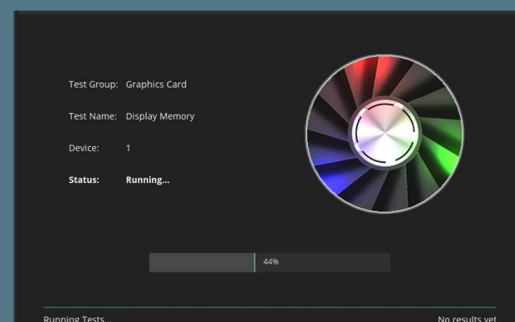
Eurosoft has helped to find millions of computer failures since 1980. No exaggeration! Celebrating 40+ years — with success from our exceptional customers.

NOTE: *Keyboard, mouse and touch testing require UEFI firmware support. Some BIOS may exhibit known issues that limit test function.

Eurosoft (UK) Ltd
Tel +44 (0)1202 297315
Fax: +44 (0)1202 558280
www.eurosoft-uk.com

Eurosoft (US) Inc.
Tel +1 (712) 255-7483
Fax: +1 (866) 615-9384
www.eurosoft-us.com

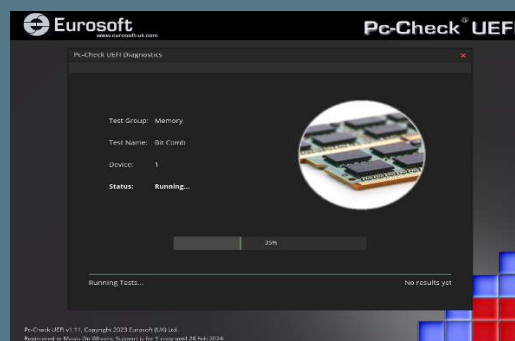
Graphics Card Testing



QR Codes



Bit Comb Test



Diagnostics out of date? Other tools not meeting your demands? Call us to discuss your testing needs. Visit our website to order all the Pc-Check® diagnostic suite at any time. Site licenses, special development and quantity discounts available. DATA ERASURE — ZeroData Windows® is ready for you.



© Eurosoft (UK) Ltd. 1988-2023. Pc-Check is a registered trademark of Eurosoft (UK) Ltd. PC Builder, Pc-Check UEFI, Pc-Check Windows, Pc-Check Virtual Pc-Check, ZeroData, ZeroData Windows, USB Preferred Port Plug, CDT, DVD, EuroDOS are trademarks of Eurosoft (UK) Ltd. All other product trademarks are recognised as belonging to their respective owners. REV140524

Note: Windows PE v1.x contains a security feature that will cause end user's systems to reboot without prior notification to the end user after 24 hours of continuous use. Windows PE v2.x contains a security feature that will cause end user's systems to reboot without prior notification to the end user after 72 hours of continuous use.