

Pc-Check® UEFI v1.14

NEW RELEASE... Tweaks matter. This Pc-Check UEFI release has two main points: ease of use and speed of testing. Many of you will have used a text editor to manually change start up files which can be time consuming. Oh, the beauty of a graphical interface to speed up that step. Often asked, "where can we include the testers' or customers' name? Done with a free-form details section you can setup for each test session so these appear on the test report. So much easier to track services. **Need for SPEED?** We've tweaked the engine a bit so you can expect faster start up time and test script loading.

Remember too, you always get Pc-Check® Self-boot included with your Pc-Check® UEFI for alternative legacy testing. Read on...

Awesome reminders, only Eurosoft do these...

Pc-Check UEFI diagnostics identify your hardware failures – **precisely**. Unlike other so called UEFI diagnostics, Pc-Check® UEFI diagnostics directly access and test essential UEFI components, regardless of BIOS or brand. **NO operating system in the way – NO Linux, NO Windows, NO secure boot issues – only UEFI testing in pure native mode.**

Test more memory, drives and CPUs like no other diagnostic tool – remarkable **256 DIMM up to 2-Exabytes memory**, and **'Multi-Exabyte' drives**, plus **1024 'Kilo-core' CPU packages** and *more tests coming...*

1st place – Longest running diagnostic company – 40 years – with spectacular results from our Micro-topology memory testing, and the original 'self-boot' capability in 1986!

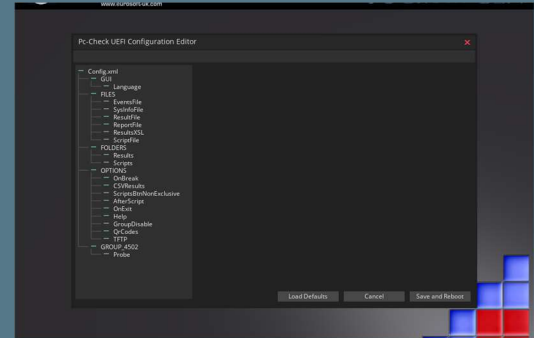
Pc-Check® UEFI Features	Benefits for You
New configuration editor	Easily make changes to the config.xml when prompted during start up, using a built-in graphical interface rather than using a text editor to change the file manually. Optionally hide the editor prompt or specific editor options.
Enhanced reporting	It is now possible to add user defined values to reports. These can include device attributes such as serial numbers, or to show the testers name, or that a physical inspection of a system has been done.
Enhanced onscreen testing display	When using a test script, dual progress bars now show the total progress of the script in addition to the progress of the current test, helping to gauge remaining test processing
Enhanced start up behavior	Get testing faster than before with quicker start up speeds and faster script loading.
Updated PCI device database	Identify and test the latest PCI devices.

Eurosoft (UK) Ltd
Tel +44 (0)1202 297315
Fax: +44 (0)1202 558280
www.eurosoft-uk.com

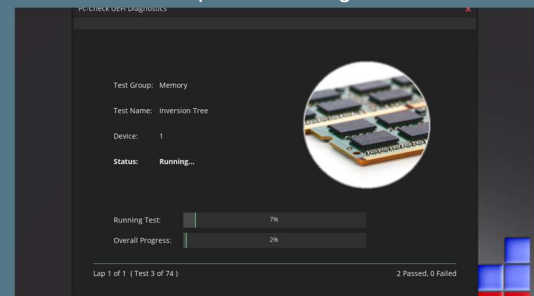
Eurosoft (US) Inc.
Tel +1 (712) 255-7483
Fax: +1 (866) 615-9384
www.eurosoft-us.com

Product Announcement Pc-Check® UEFI

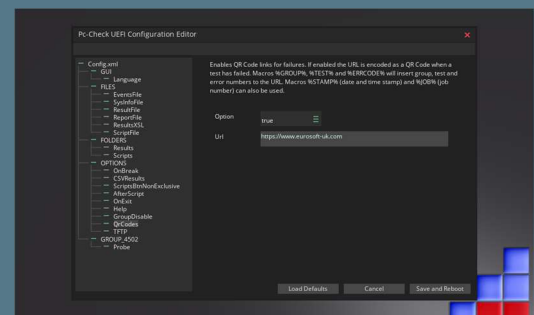
Configuration Editor



Script & Test Progress



QR Code Configuration



Like what you see?

Combine **Pc-Check® UEFI** and **Pc-Check®**, the ultimate bare metal testing solution with **Pc-Check® Windows®**, expanding your range of diagnostics to a perfect 3-point test plan.

FREE Updates and technical support provided automatically for one year. Keep your hardware testing methods current. Upgrade to the latest version of **Pc-Check UEFI**

ALL FEATURED UPDATES

www.eurosoft-uk.com

Previous release highlights

Feature	Benefits for you
Memory error information	Quickly determine which memory module is faulty even when system data from the BIOS is poor quality. The on screen display and reports now show what data was written to memory and what was read to help identify the exact bit of which DIMM failed.
NVMe testing	Detect, classify, test and report on NVMe drives which are behind Intel RAID (iRST). Temperature is now conveniently converted to degrees Celsius, previously Kelvin.
SMART test reporting	Additional test failure information for SMART testing; NVMe health testing and system stress testing. Includes SMART attribute ID/ name, the reason for SMART self-test failures, core/ thread number.
Processor testing	Increased compatibility with certain 12th generation Intel processors which have no E-Cores, such as i5-12400, or where E-Cores have been disabled in the BIOS configuration.
System information	Easily check that Secure Boot is enabled by viewing the system information.

Including the original Pc-Check® Self-boot, Pc-Check UEFI offers the ultimate 'bare-metal' testing solution.

Combine Pc-Check® Windows, expanding your range of diagnostics to a perfect 3 -point test plan.



Developing intricate computer diagnostic software – because other hardware tests miss them completely – Pc-Check UEFI is indispensable. Count on a continued flow of reliable test results whether building, installing, supporting or servicing computers. Pc-Check UEFI offers the greatest support for testing a multitude of new or legacy devices outside of the operating system.

Eurosoft has helped to find millions of computer failures since 1980. No exaggeration! Celebrating 40+ years — with success from our exceptional customers.

NOTE: *Keyboard, mouse and touch testing require UEFI firmware support. Some BIOS may exhibit known issues that limit test function.

Eurosoft (UK) Ltd
Tel +44 (0)1202 297315
Fax: +44 (0)1202 558280
www.eurosoft-uk.com

Eurosoft (US) Inc.
Tel +1 (712) 255-7483
Fax: +1 (866) 615-9384
www.eurosoft-us.com

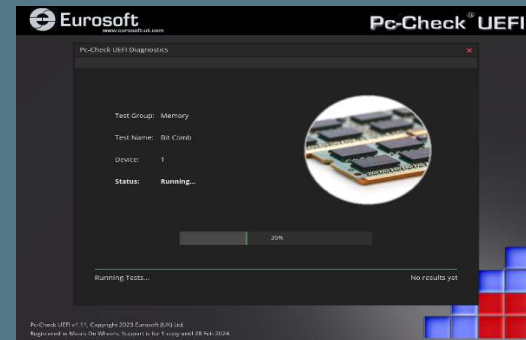
Graphics Card Testing



QR Codes



Bit Comb Test



Diagnostics out of date? Other tools not meeting your demands? Call us to discuss your testing needs. Visit our website to order all the Pc-Check® diagnostic suite at any time. Site licenses, special development and quantity discounts available. DATA ERASURE — ZeroData Windows® is ready for you.



© Eurosoft (UK) Ltd. 1988-2023. Pc-Check is a registered trademark of Eurosoft (UK) Ltd. PC Builder, Pc-Check UEFI, Pc-Check Windows, Pc-Check Virtual Pc-Check, ZeroData, ZeroData Windows, USB Preferred Port Plug, CDT, DVDIT, EuroDOS are trademarks of Eurosoft (UK) Ltd. All other product trademarks are recognised as belonging to their respective owners. REV270224

Note: Windows PE v1.x contains a security feature that will cause end user's systems to reboot without prior notification to the end user after 24 hours of continuous use. Windows PE v2.x contains a security feature that will cause end user's systems to reboot without prior notification to the end user after 72 hours of continuous use.