

Pc-Check® Windows® V3.4.1.20

TAKE NOTICE... This release is all about a step up with loads of added processors, ripe and ready for testing. And to make sure other intimate parts can be tested, more lovely vendor specific PCI devices are added to the course of this release event. .

Please continue to use the online eTestManager to add program updates and license terms to each of your Eurosoft USB program devices. Contact the Support or Sales team for assistance

Awesome reminders, only Eurosoft do these...

Test more memory than other Windows-based diagnostic tools – Unlimited DIMM reporting 512Gb (W8.1) to **1TB memory** (W10, 64Bit); and **2-Exabyte drives; 256 core CPU** packages, video, and UEFI enabled hardware.

1st place – Longest running diagnostic company – 40+ years – with spectacular results from the first-on-the-scene **Micro-topology** memory testing, and our original 'self-boot' capability in 1986!

Pc-Check® Windows® features

Updated CPUID

Greater test coverage for the latest hardware including support of Intel Meteor Lake Intel Core i9 13980HX, 13900HX, 13900HK (2.06.1) 14900K/KF (24c) Intel Core i7-14700K/KF (20c) 13700H, 13650HX (2.06.1) Intel Core i5 13500HX, 13420H (2.06.1) 14400F, 14400T, 14400, 14500 and 14500T 14600K/KF (14c) Intel Core i3 14100F, 14100T and 14100 Intel 300 and 300T processors (RPL, 2c, 65/35W) Intel N97, N95 and N50 (ADL-N, 6W to 15W) AMD Threadripper PRO 7995WX (STP, 96c), 7985WX (STP, 64c), 7975WX (STP, 32c), 7955WX (STP, 16c) and 7945WX (STP) Preliminary support for AMD EPYC Bergamo AMD Radeon RX 7800 XT and 7700 XT (Navi 32) AMD Ryzen Z1 and Z1 Extreme (2.06.1) Ryzen 9 7940H & HS, Ryzen 7 7840HS (2.06.1) AMD Dragon Range Ryzen 9 7945HX (16c/55-75W), 7845HX (12c/45-75W), Ryzen 7 7745HX (8c/45-75W), 7645HX (6c/45-75W) Zhaoxin C-1080 IGP (KX-6000G) Zhaoxin KH-40000 YongFeng (12/16/32c) NVIDIA RTX 4070 (AD104-250) NVIDIA RTX 4060 Ti (AD106-350) AMD Radeon RX 7600 (Navi 33 XL)

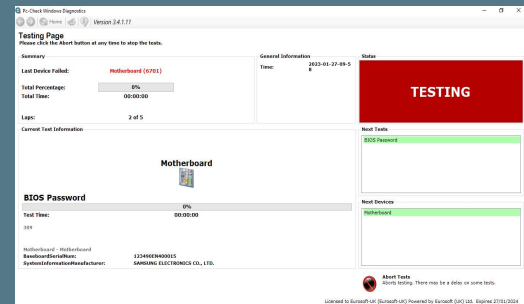
Updated PCI device database

Updates to the PCI Device and Vendor database makes it possible to identify and test more PCI devices

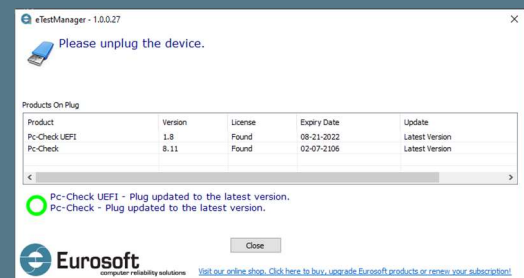
Benefits for You

Product Announcement Pc-Check® Windows®

BIOS Password test



eTestManager



Windows® Compatibility



Like what you see?

Combine **Pc-Check® UEFI** and **Pc-Check®**, the ultimate bare metal testing solution with **Pc-Check® Windows®**, expanding your range of diagnostics to a perfect 3-point test plan.

FREE Updates and technical support provided automatically for one year. Keep your hardware testing methods current. Upgrade to the latest version of **Pc-Check® Windows®**

ALL FEATURED UPDATES

www.eurosoft-uk.com

Previous Release Highlights

<i>BIOS password test</i>	Quickly locate the presence and setting of the System or Set-up BIOS Password to find a PC device that may need further processing. BIOS passwords can be used to disable BIOS flashing, certain boot up features or even disable devices from being used.
<i>Windows® compatibility test</i>	Confirms PC system/devices are ready for Microsoft Windows® 11 installation, as well as ensuring your chosen PC hardware meets system requirements before upgrading hardware and operating systems.
<i>CPUID</i>	intel Core i9-13900/K/F/KF, Core i7-13700/K/F/KF, Core i5-13600/K/F/KF, Core i5-13500, Core i5-13400 and Core i3-13100. Intel ARC A770, A750, A580 (ACM-G10) and A380 (ACM-G11) GPUs. Support for multipliers > 64x on AMD Ryzen 7000. Preliminary support for NVIDIA RTX 4000 GPUs AMD Ryzen 9 7950X, Ryzen 9 7900X, Ryzen 7 7700X, Ryzen 5 7600X. AMD X670E/B650 chipsets. AMD Radeon RX 6950 XT (Navi 21 KXTX), RX 6750 XT (Navi 22 KXT), RX 6650 XT (Navi 23 KXT) and RX 6400 (Navi 24 XL). Preliminary support of AMD EXPO memory overclocking profiles. Intel Z790 platform. Intel Xeon Platinum, Gold and Silver "Ice Lake-SP" (10nm, FCLGA4189).

Combine Pc-Check® UEFI and original Pc-Check® Self-boot for the ultimate 'bare-metal' testing solution alongside Pc-Check® Windows®, expanding your range of diagnostics to a perfect 3-point test plan.



Developing intricate computer diagnostic software – *because other hardware tests miss them completely* – Pc-Check® Windows® is indispensable. Count on a continued flow of reliable test results whether building, installing, supporting or servicing computers. Pc-Check® Windows® offers the greatest support for testing a multitude of new or legacy devices both pre-boot WinPE or full Windows operating system.

Eurosoft has helped to find millions of computer failures since 1980. No exaggeration! Celebrating 40+ years — with success from our exceptional customers.

NOTE: *WinPE has reduced driver support limiting its test function. The full Windows operating system is required for certain device driven hardware.

Eurosoft (UK) Ltd
Tel +44 (0)1202 297315
www.eurosoft-uk.com

Eurosoft (US) Inc.
Tel +1 (712) 255-7483
www.eurosoft-us.com

SEND US YOUR IDEAS....

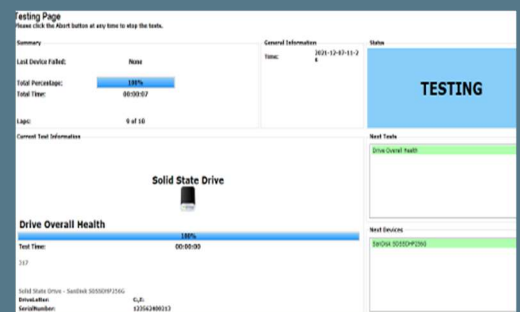
[Support and Feature Requests](#)

Product Announcement Pc-Check® Windows®

Windows® Compatibility



Overall Drive Health



Diagnostics out of date? Other tools not meeting your demands? Call us to discuss your testing needs. Visit our website to order all the Pc-Check® diagnostic software at any time. Site licenses, special development and quantity discounts available. DATA ERASURE — ZeroData™ Windows® is ready for you.



© Eurosoft (UK) Ltd. 1988-2023. Pc-Check is a registered trademark of Eurosoft (UK) Ltd. PC Builder, Pc-Check UEFI, Pc-Check Windows, Pc-Check Virtual Pc-Check, ZeroData, ZeroData Windows, USB Preferred Port Plug, CDT, DVDT, EuroDOS are trademarks of Eurosoft (UK) Ltd. All other product trademarks are recognised as belonging to their respective owners. REV011223KH

Note: Windows PE v1.x contains a security feature that will cause end user's systems to reboot without prior notification to the end user after 24 hours of continuous use. Windows PE v2.x contains a security feature that will cause end user's systems to reboot without prior notification to the end user after 72 hours of continuous use.