

## Pc-Check® UEFI v1.13

**HOT NEWS RELEASE... Bad memory news first:** it's tricky presenting memory failure, especially when poor quality BIOS data obscures the picture. Busted this flaw real fast so you can see exactly which bit of the DIMM failed on both the display and reports. You may have noticed [or not] how a RAID controller hides NVMe drives, presenting them incorrectly to a system as an AHCI (SATA) SSD. Yes, as you would expect, version 1.13 manoeuvres to correctly show the NVMe group. Science applies to temperatures, so we've converted to Celsius from Kelvin for a more global consensus. Remember too, you always get Pc-Check® Self-boot included with your Pc-Check® UEFI. Read on...

### Awesome reminders, only Eurosoft do these...

Pc-Check UEFI diagnostics identify your hardware failures – **precisely**. Unlike other so called UEFI diagnostics, Pc-Check® UEFI diagnostics directly access and test essential UEFI components, regardless of BIOS or brand. **NO operating system in the way – NO Linux, NO Windows, NO secure boot issues – only UEFI testing in pure native mode.**

Test more memory, drives and CPUs like no other diagnostic tool – remarkable **256 DIMM up to 2-Exabytes memory**, and **'Multi-Exabyte' drives**, plus **1024 'Kilo-core' CPU packages** and *more tests coming...*

**1st place** – Longest running diagnostic company – 40 years – with spectacular results from our Micro-topology memory testing, and the original 'self-boot' capability in 1986!

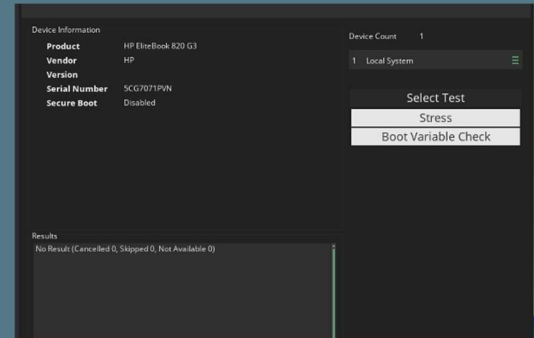
Pc-Check® UEFI Features	Benefits for You
<b>Enhanced</b> memory error information	Quickly determine which memory module is faulty even when system data from the BIOS is poor quality. The on screen display and reports now show what data was written to memory and what was read to help identify the exact bit of which DIMM failed.
<b>Enhanced</b> NVMe testing	Detect, classify, test and report on NVMe drives which are behind Intel RAID (iRST). Temperature is now conveniently converted to degrees Celsius, previously Kelvin.
<b>Enhanced</b> SMART test reporting	Additional test failure information for SMART testing; NVMe health testing and system stress testing. Includes SMART attribute ID/name, the reason for SMART self-test failures, core/thread number.
<b>Enhanced</b> processor testing	Increased compatibility with certain 12th generation Intel processors which have no E-Cores, such as i5-12400, or where E-Cores have been disabled in the BIOS configuration.
<b>Enhanced</b> system information	Easily check that Secure Boot is enabled by viewing the system information.

**Eurosoft (UK) Ltd**  
Tel +44 (0)1202 297315  
Fax: +44 (0)1202 558280  
www.eurosoft-uk.com

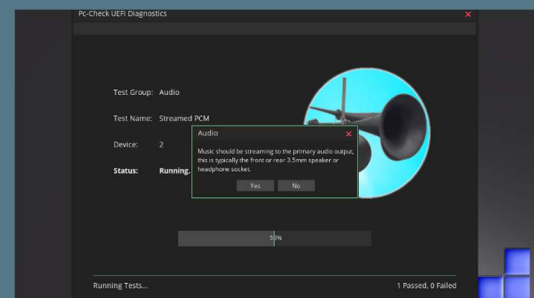
**Eurosoft (US) Inc.**  
Tel +1 (712) 255-7483  
Fax: +1 (866) 615-9384  
www.eurosoft-us.com

## Product Announcement Pc-Check® UEFI

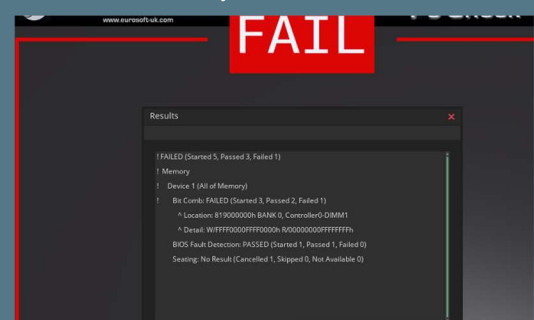
### Secure Boot Status



### Streamed PCM



### Memory Error Information



*Like what you see?*

Combine Pc-Check® UEFI and Pc-Check®, the ultimate bare metal testing solution with Pc-Check® Windows®, expanding your range of diagnostics to a perfect 3-point test plan.

FREE Updates and technical support provided automatically for one year. Keep your hardware testing methods current. Upgrade to the latest version of **Pc-Check UEFI**

**ALL FEATURED UPDATES**

www.eurosoft-uk.com

## Previous release highlights

Feature	Benefits for you
Audio Test Group	Test HD Audio controllers with 3 brand new tests. Confirm basic audio operation with the Direct PCM test. Using a pure sine wave, listen for pure tone with no clicks, crackles. Streamed PCM plays music, covering a full range of audio frequencies, used to test built in speakers, listen for the buzzing of loose speaker cones, etc. The DMA Controller test checks the audio controller is sending data, as a non-interactive test, this test can be scripted as it does not require an operator to be present.
On-screen results display	Failure location information (such as DIMM socket) has been added to the on-screen results display. This makes it even easier to identify and replace the failed component.
Enhanced Reporting	The text report now contains the Failure location information (such as DIMM socket) for the failed component, giving you record to supply customers or add to your recordation.
support for DDR5 memory	Expanded testing to include the latest memory types.

### Including the original Pc-Check® Self-boot, Pc-Check UEFI offers the ultimate 'bare-metal' testing solution.

Combine Pc-Check® Windows, expanding your range of diagnostics to a perfect 3-point test plan.



**Developing intricate computer diagnostic software – because other hardware tests miss them completely – Pc-Check UEFI is indispensable.** Count on a continued flow of reliable test results whether building, installing, supporting or servicing computers. Pc-Check UEFI offers the greatest support for testing a multitude of new or legacy devices outside of the operating system.

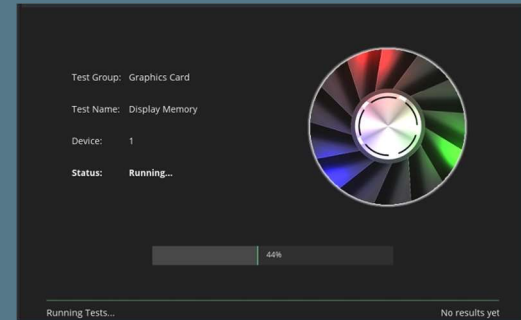
**Eurosoft has helped to find millions of computer failures since 1980. No exaggeration! Celebrating 40+ years — with success from our exceptional customers.**

NOTE: \*Keyboard, mouse and touch testing require UEFI firmware support. Some BIOS may exhibit known issues that limit test function.

**Eurosoft (UK) Ltd**  
Tel +44 (0)1202 297315  
Fax: +44 (0)1202 558280  
www.eurosoft-uk.com

**Eurosoft (US) Inc.**  
Tel +1 (712) 255-7483  
Fax: +1 (866) 615-9384  
www.eurosoft-us.com

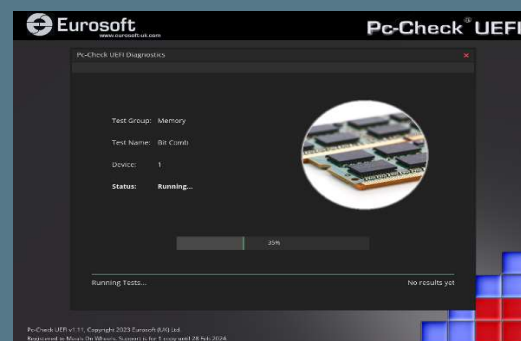
### Graphics Card Testing



### QR Codes



### Bit Comb Test



Diagnostics out of date? Other tools not meeting your demands? Call us to discuss your testing needs. Visit our website to order all the Pc-Check® diagnostic suite at any time. Site licenses, special development and quantity discounts available. DATA ERASURE — ZeroData Windows® is ready for you.



© Eurosoft (UK) Ltd. 1988-2023. Pc-Check is a registered trademark of Eurosoft (UK) Ltd. PC Builder, Pc-Check UEFI, Pc-Check Windows, Pc-Check Virtual Pc-Check, ZeroData, ZeroData Windows, USB Preferred Port Plug, CDT, DVDIT, EuroDOS are trademarks of Eurosoft (UK) Ltd. All other product trademarks are recognised as belonging to their respective owners. REV201123

Note: Windows PE v1.x contains a security feature that will cause end user's systems to reboot without prior notification to the end user after 24 hours of continuous use. Windows PE v2.x contains a security feature that will cause end user's systems to reboot without prior notification to the end user after 72 hours of continuous use.