

Pc-Check® UEFI v1.12

TREND MAKING RELEASE... **Did you hear that???** Well you can now with a totally new **AUDIO test** all within the tight testing of Pc-Check UEFI. Oh yes, superb, streamed pulse-code modulation (PCM) plays music to cover a full range of audio frequencies, bringing you pure sine wave so you can expect clean tones with no clicking or crackling noise. Hands-off non-interactive script too. **WAIT!** More great news on the memory testing front. Hugely unique to a UEFI environment without Windows, now you can **VIEW each memory socket failure** to quickly ID and replace the failed component. Top that off with a fast text based test report and you'll have all the evidence you need to prove and record the memory test. Remember too you always get Pc-Check® Self-boot included with your Pc-Check® UEFI. Read on...

Awesome reminders, only Eurosoft do these...

Pc-Check UEFI diagnostics identify your hardware failures – **precisely**. Unlike other so called UEFI diagnostics, Pc-Check® UEFI diagnostics directly access and test essential UEFI components, regardless of BIOS or brand. **NO operating system in the way – NO Linux, NO Windows, NO secure boot issues – only UEFI testing in pure native mode.**

Test more memory, drives and CPUs like no other diagnostic tool – remarkable **256 DIMM up to 2-Exabytes memory**, and **'Multi-Exabyte' drives**, plus **1024 'Kilo-core' CPU packages** and *more tests coming...*

1st place – Longest running diagnostic company – 40 years – with spectacular results from our Micro-topology memory testing, and the original 'self-boot' capability in 1986!

Pc-Check® UEFI Features

Benefits for You

NEW Audio Test Group

Test HD Audio controllers with 3 brand new tests. Confirm basic audio operation with the Direct PCM test. Using a pure sine wave, listen for pure tone with no clicks, crackles. Streamed PCM plays music, covering a full range of audio frequencies, used to test built in speakers, listen for the buzzing of loose speaker cones, etc. The DMA Controller test checks the audio controller is sending data, as a non-interactive test, this test can be scripted as it does not require an operator to be present.

Enhanced On-screen results display

Failure location information (such as DIMM socket) has been added to the on-screen results display. This makes it even easier to identify and replace the failed component.

Enhanced Reporting

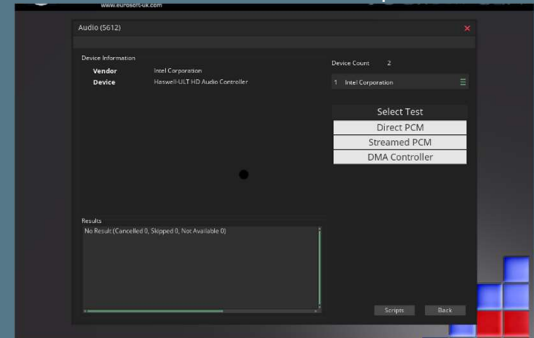
The text report now contains the Failure location information (such as DIMM socket) for the failed component, giving you record to supply customers or add to your recordation.

Eurosoft (UK) Ltd
Tel +44 (0)1202 297315
Fax: +44 (0)1202 558280
www.eurosoft-uk.com

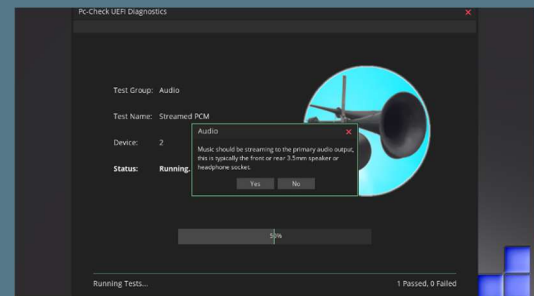
Eurosoft (US) Inc.
Tel +1 (712) 255-7483
Fax: +1 (866) 615-9384
www.eurosoft-us.com

Product Announcement Pc-Check® UEFI

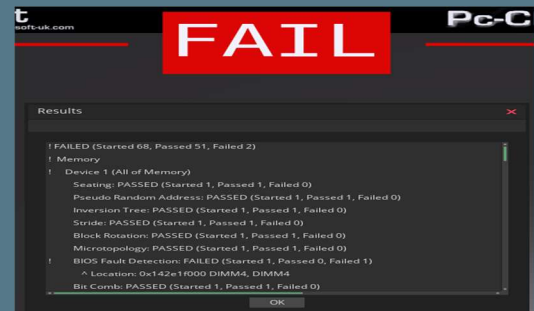
HD Audio Test Group



Streamed PCM



Failure Location



Like what you see?

Combine **Pc-Check® UEFI** and **Pc-Check®**, the ultimate bare metal testing solution with **Pc-Check® Windows®**, expanding your range of diagnostics to a perfect 3-point test plan.

FREE Updates and technical support provided automatically for one year. Keep your hardware testing methods current. Upgrade to the latest version of **Pc-Check UEFI**

ALL FEATURED UPDATES

www.eurosoft-uk.com

Previous release highlights

Feature	Benefits for you
Bit Comb memory test	Find more memory errors with this brand new test algorithm that alternates bits at a range of different frequencies and polarity.
Support for Intel Hybrid CPUs	Fully test both performance and efficient cores (referred to as P-cores and E-cores) of intel processors.
Pseudo-random Data, Pseudo-random Address and Microtopology memory testing	Find more errors with improved handling of random seeds in memory testing; where random seed parameters are set to zero (default), the actual seed used is first generated from the current date and time – this means that running the same test for more than one lap will begin each with a new random sequence for more rigorous testing.
support for DDR5 memory	Expanded testing to include the latest memory types.

Including the original Pc-Check® Self-boot, Pc-Check UEFI offers the ultimate 'bare-metal' testing solution.

Combine Pc-Check® Windows, expanding your range of diagnostics to a perfect 3 -point test plan.



Developing intricate computer diagnostic software – because other hardware tests miss them completely – Pc-Check UEFI is indispensable. Count on a continued flow of reliable test results whether building, installing, supporting or servicing computers. Pc-Check UEFI offers the greatest support for testing a multitude of new or legacy devices outside of the operating system.

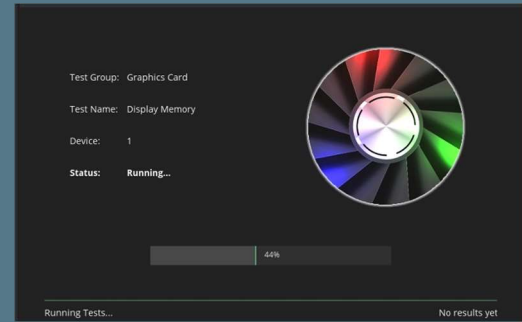
Eurosoft has helped to find millions of computer failures since 1980. No exaggeration! Celebrating 40+ years — with success from our exceptional customers.

NOTE: *Keyboard, mouse and touch testing require UEFI firmware support. Some BIOS may exhibit known issues that limit test function.

Eurosoft (UK) Ltd
Tel +44 (0)1202 297315
Fax: +44 (0)1202 558280
www.eurosoft-uk.com

Eurosoft (US) Inc.
Tel +1 (712) 255-7483
Fax: +1 (866) 615-9384
www.eurosoft-us.com

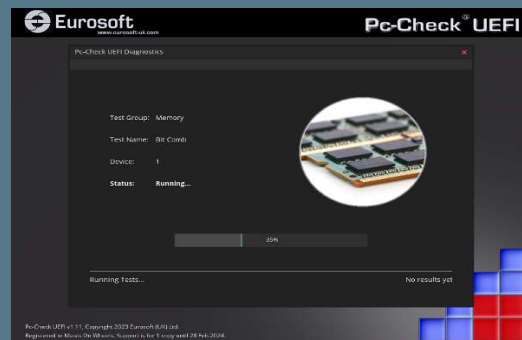
Graphics Card Testing



QR Codes



Bit Comb Test



Diagnostics out of date? Other tools not meeting your demands? Call us to discuss your testing needs. Visit our website to order all the Pc-Check® diagnostic suite at any time. Site licenses, special development and quantity discounts available. DATA ERASURE — ZeroData Windows® is ready for you.



© Eurosoft (UK) Ltd. 1988-2023. Pc-Check is a registered trademark of Eurosoft (UK) Ltd. PC Builder, Pc-Check UEFI, Pc-Check Windows, Pc-Check Virtual Pc-Check, ZeroData, ZeroData Windows, USB Preferred Port Plug, CDT, DVDIT, EuroDOS are trademarks of Eurosoft (UK) Ltd. All other product trademarks are recognised as belonging to their respective owners. REV120723

Note: Windows PE v1.x contains a security feature that will cause end user's systems to reboot without prior notification to the end user after 24 hours of continuous use. Windows PE v2.x contains a security feature that will cause end user's systems to reboot without prior notification to the end user after 72 hours of continuous use.