

Pc-Check® Windows® V3.4.1.14...The nut that needs cracking: BIOS passwords. First you need to find them. Once a password is set, the BIOS may not be accessible and a device may not boot – unless you know the BIOS password. Hints and tips abound on unlocking or resetting a BIOS password doing a quick internet search. Preparing for or during test processing, it may be necessary to disable BIOS flashing or exclude a certain device. In this release of Pc-Check Windows, the team added a new test to quickly find a BIOS password allowing you to move forward with your choice of BIOS settings. Forever adding hardware to test, more CPU's added to the extensive testing list.

Awesome reminders, only Eurosoft do these...

Test more memory than other Windows-based diagnostic tools – Unlimited DIMM reporting 512Gb (W8.1) to **1TB memory** (W10, 64Bit); and **2-Exabyte drives; 256 core CPU** packages, video, and UEFI enabled hardware.

1st place – Longest running diagnostic company – 40+ years – with spectacular results from the first-on-the-scene **Micro-topology** memory testing, and our original 'self-boot' capability in 1986!

Pc-Check® Windows® features

New QR Codes

Display QR codes for test failures. Configure to display custom URLs for troubleshooting information or customer support pages. QR codes are adaptable for hosting on your website or portal. No Eurosoft connection required. Please contact us for use with the 12N QR Code application.

New Minimum TPM version check

Confirm the Trusted Module Platform version meets or exceeds your minimum requirement.

Enhanced Sensor tests

Includes GPU hotspot temperature. Measure the peak temperature the GPU records instead of the average temperature of all the sensors.

Updated CPUID

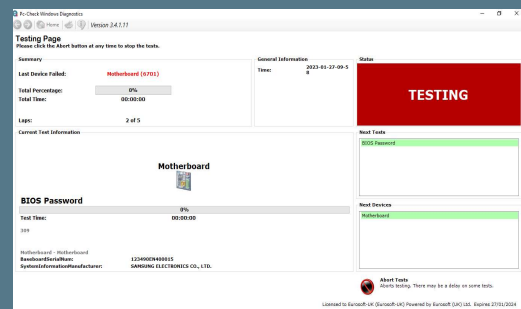
Greater test coverage for the latest hardware including Intel Xeon Sapphire Rapids platform Preliminary support for AMD Storm Peak Zhaoxin KX-6000G/4 CPU SPM memory support Improved support of Intel Pentium Overdrive Intel N100 and N200 (ADL-N) Intel Core i3 N300 and N305 (ADL-N) Intel Core i5 13450HX, 13500HX, Corei7 13650HX, 13700HX (55W) Intel Core i9 13900KS AMD Ryzen 9 7950X3D, 7900X3D, Ryzen 7 800X3D AMD Ryzen 9 7900, Ryzen 7 7700, Ryzen 5 7600 (RPL,65W) AMD Athlon Gold 7220U, Ryzen 3 7320U, Ryzen 5 7520U (MDN-A0, 15W) AMD Radeon RX 7900XT/XTX NVIDIA RTX 4080 16GB (AD103) NVIDIA RTX 4070 Ti(AD104) Intel Core i9-13900/K/F/KF, Core i7 -13500, Core i5-13400 and Core i3-13100 Intel ARC A770, A750, A580 (ACM-G10) and A380 (ACM-G11) GPUs Support for multipliers >64x on AMD Ryzen 7000 Preliminary Support for NVIDIA RTX 4000 GPUs.

Product Announcement Pc-Check® Windows®

TPM Version Check



BIOS Password test



QR Codes



Like what you see?

Combine **Pc-Check® UEFI** and **Pc-Check®**, the ultimate bare metal testing solution with **Pc-Check® Windows®**, expanding your range of diagnostics to a perfect 3-point test plan.

FREE Updates and technical support provided automatically for one year. Keep your hardware testing methods current. Upgrade to the latest version of **Pc-Check® Windows®**

ALL FEATURED UPDATES

www.eurosoft-uk.com

Previous Release Highlights

BIOS password test

Quickly locate the presence and setting of the System or Set-up BIOS Password to find a PC device that may need further processing. BIOS passwords can be used to disable BIOS flashing, certain boot up features or even disable devices from being used.

CPUID

Greater test coverage including Intel Core i9-13900/K/F/KF, Core i7-13700/K/F/KF, Core i5-13600/K/F/KF, Core i5-13500, Core i5-13400 and Core i3-13100. Intel ARC A770, A750, A580 (ACM-G10) and A380 (ACM-G11) GPUs. Support for multipliers > 64x on AMD Ryzen 7000. Preliminary support for NVIDIA RTX 4000 GPUs AMD Ryzen 9 7950X, Ryzen 9 7900X, Ryzen 7 7700X, Ryzen 5 7600X. AMD X670E/B650 chipsets. AMD Radeon RX 6950 XT (Navi 21 KXTX), RX 6750 XT (Navi 22 KXT), RX 6650 XT (Navi 23 KXT) and RX 6400 (Navi 24 XL). Preliminary support of AMD EXPO memory overclocking profiles. Intel Z790 platform. Intel Xeon Platinum, Gold and Silver "Ice Lake-SP" (10nm, FCLGA4189).

Combine Pc-Check® UEFI and original Pc-Check® Self-boot for the ultimate 'bare-metal' testing solution alongside Pc-Check® Windows®, expanding your range of diagnostics to a perfect 3-point test plan.



Developing intricate computer diagnostic software – because other hardware tests miss them completely – Pc-Check® Windows® is indispensable. Count on a continued flow of reliable test results whether building, installing, supporting or servicing computers. Pc-Check® Windows® offers the greatest support for testing a multitude of new or legacy devices both pre-boot WinPE or full Windows operating system.

Eurosoft has helped to find millions of computer failures since 1980. No exaggeration! Celebrating 40+ years — with success from our exceptional customers.

NOTE: *WinPE has reduced driver support limiting its test function. The full Windows operating system is required for certain device driven hardware.

Eurosoft (UK) Ltd
Tel +44 (0)1202 297315
www.eurosoft-uk.com

Eurosoft (US) Inc.
Tel +1 (712) 255-7483
www.eurosoft-us.com

SEND US YOUR IDEAS....

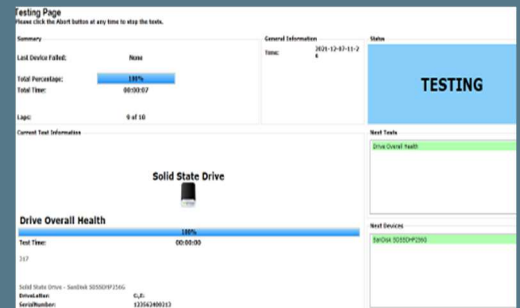
[Support and Feature Requests](#)

Product Announcement Pc-Check® Windows®

Windows® Compatibility



Overall Drive Health



Diagnostics out of date? Other tools not meeting your demands? Call us to discuss your testing needs. Visit our website to order all the Pc-Check® diagnostic suite at any time. Site licenses, special development and quantity discounts available. DATA ERASURE — ZeroData™ Windows® is ready for you.



© Eurosoft (UK) Ltd. 1988-2023. Pc-Check is a registered trademark of Eurosoft (UK) Ltd. PC Builder, Pc-Check UEFI, Pc-Check Windows, Pc-Check Virtual Pc-Check, ZeroData, ZeroData Windows, USB Preferred Port Plug, CDT, DVDT, EuroDOS are trademarks of Eurosoft (UK) Ltd. All other product trademarks are recognised as belonging to their respective owners. REV200323KH

Note: Windows PE v1.x contains a security feature that will cause end user's systems to reboot without prior notification to the end user after 24 hours of continuous use. Windows PE v2.x contains a security feature that will cause end user's systems to reboot without prior notification to the end user after 72 hours of continuous use.