

## Pc-Check® UEFI v1.10

**LATEST RELEASE...** Now you see it – immediate ID of the precise FAILED DIMM LOCATION in the test reports. Another “you asked for it” moment... Make use of TFTP to send your test reports to a network location, saving you time by removing manual USB report uploads. In case you missed them last time, the QR codes test result notifications have more detail for sharing test data.

**Pc-Check® Self-boot is included with Pc-Check® UEFI. Read on...**

### Awsome reminders, only Eurosoft do these...

Pc-Check UEFI diagnostics identify your hardware failures – **precisely**. Unlike other so called UEFI diagnostics, Pc-Check® UEFI diagnostics directly access and test essential UEFI components, regardless of BIOS or brand. **NO operating system in the way – NO Linux, NO Windows, NO secure boot issues – only UEFI testing in pure native mode.**

Test more memory, drives and CPUs like no other diagnostic tool – remarkable **256 DIMM up to 2-Exabytes memory**, and **'Multi-Exabyte' drives**, plus **1024 'Kilo-core' CPU packages** and *more tests coming...*

**1st place** – Longest running diagnostic company – 40 years – with spectacular results from our Micro-topology memory testing, and the original 'self-boot' capability in 1986!

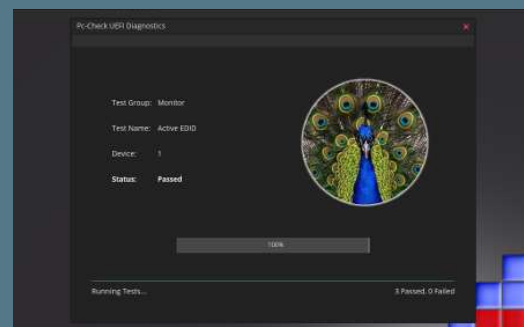
Pc-Check® UEFI Features	Benefits for You
<b>NEW</b> Extended Display Identification Data test	Quickly identify the presence and test the connected monitor or display device capabilities, such as resolution and video signal.
<b>NEW</b> Advanced scripting option	Ability to specify which device numbers are tested with an advanced script. For example to test hard drives one, three, four, and 5 (Not 2) enter '1,3-5'
<b>NEW</b> Trivial File Transfer Protocol	Test results can be sent to a network location using TFTP at the end of the testing session, before removing the USB Program Device (USBPD). Options permit for the local files to be deleted from the USBPD after successful transfer.
<b>NEW</b> Config.XML option	Added 'ask' attribute to 'ScriptFile' element of config.xml. Setting this opens the file chooser to select a script immediately at start-up bypassing the Main Menu. The filename, if present, will be pre-selected.
<b>New</b> 'LogInfo' output to the results XML	Provides failure information in the test report such as the failed DIMM location without needing to cross reference the system information XML file, it also gives failing thread ID for processor testing and sector locations for media testing.

**Eurosoft (UK) Ltd**  
Tel +44 (0)1202 297315  
Fax: +44 (0)1202 558280  
[www.eurosoft-uk.com](http://www.eurosoft-uk.com)

**Eurosoft (US) Inc.**  
Tel +1 (712) 255-7483  
Fax: +1 (866) 615-9384  
[www.eurosoft-us.com](http://www.eurosoft-us.com)

## Product Announcement Pc-Check® UEFI

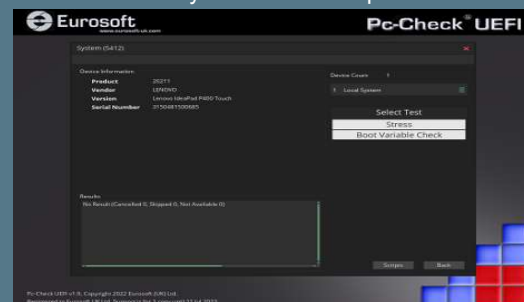
### EDID Test



### QR Codes



### System Test Group



*Like what you see?*

Combine **Pc-Check® UEFI** and **Pc-Check®**, the ultimate bare metal testing solution with **Pc-Check® Windows®**, expanding your range of diagnostics to a perfect 3-point test plan.

FREE Updates and technical support provided automatically for one year. Keep your hardware testing methods current. Upgrade to the latest version of **Pc-Check UEFI**

**ALL FEATURED UPDATES**

[www.eurosoft-uk.com](http://www.eurosoft-uk.com)

## Pc-Check® UEFI Features

## Benefits for You

<b>Updated QR Codes</b>	QR Codes can now also include the device number and the error code.
<b>Updated Video Memory test</b>	Added parameters that can exclude parts of the display that have On Screen Display (OSD) items – such as the keyboard icon on models of Surface laptop.
<b>Updated Command line version</b>	It is now possible to control wait and exit at the command line. These behaviors are also understood in the config.xml file including to shut down making it practical to 'auto-boot' the command line version on headless systems without entering the UEFI shell.
<b>Updated Command line version</b>	Results output from this version are improved to show group and test names in addition to their numbers.
<b>Updated PCI Device database</b>	Updates to the PCI Device and Vendor database makes it possible to identify and test more PCI devices than was previously possible.

**Including the original Pc-Check® Self-boot, Pc-Check UEFI offers the ultimate 'bare-metal' testing solution.**

Combine Pc-Check® Windows, expanding your range of diagnostics to a perfect 3-point test plan.



**Developing intricate computer diagnostic software – because other hardware tests miss them completely – Pc-Check UEFI is indispensable.** Count on a continued flow of reliable test results whether building, installing, supporting or servicing computers. Pc-Check UEFI offers the greatest support for testing a multitude of new or legacy devices outside of the operating system.

**Eurosoft has helped to find millions of computer failures since 1980. No exaggeration! Celebrating 40+ years — with success from our exceptional customers.**

NOTE: \*Keyboard, mouse and touch testing require UEFI firmware support. Some BIOS may exhibit known issues that limit test function.

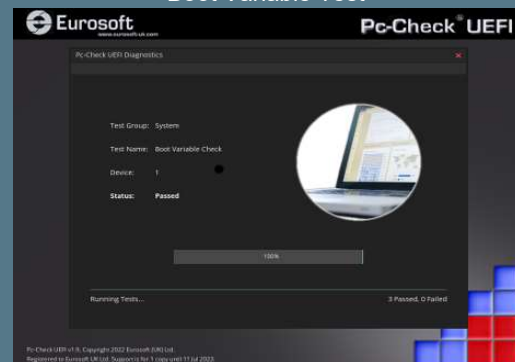
**Eurosoft (UK) Ltd**  
Tel +44 (0)1202 297315  
Fax: +44 (0)1202 558280  
www.eurosoft-uk.com

**Eurosoft (US) Inc.**  
Tel +1 (712) 255-7483  
Fax: +1 (866) 615-9384  
www.eurosoft-us.com

## Graphics Card Testing



## Boot Variable Test



## Test Errors & Troubleshooting

Errors and Troubleshooting	
Serial Ports - Serial Port	
FIFO - Not Available	
0x00/0FF-0045	The test cannot be executed because something is missing.
Most likely a loopback plug was not detected at the port.	
Serial Ports - Serial Port	
FIFO - Not Available	
0x00/0FF-0045	The test cannot be executed because something is missing.
Most likely a loopback plug was not detected at the port.	
Network Interface - Intel(R) Ethernet Connection (2) I218-V	
ICMP - Failed	
0x02/3FF-0003	IP v4 conversion error. IP address in configuration file is not in correct format.
The device may be faulty. Check that all prerequisites were met correctly.	

Diagnostics out of date? Other tools not meeting your demands? Call us to discuss your testing needs. Visit our website to order all the Pc-Check® diagnostic suite at any time. Site licenses, special development and quantity discounts available. DATA ERASURE — ZeroData Windows® is ready for you.



© Eurosoft (UK) Ltd. 1988-2022. Pc-Check is a registered trademark of Eurosoft (UK) Ltd. PC Builder, Pc-Check UEFI, Pc-Check Windows, Pc-Check Virtual Pc-Check, ZeroData, ZeroData Windows, USB Preferred Port Plug, CDT, DVDIT, EuroDOS are trademarks of Eurosoft (UK) Ltd. All other product trademarks are recognised as belonging to their respective owners. REV191022

Note: Windows PE v1.x contains a security feature that will cause end user's systems to reboot without prior notification to the end user after 24 hours of continuous use. Windows PE v2.x contains a security feature that will cause end user's systems to reboot without prior notification to the end user after 72 hours of continuous use.