



Pc-Check® Windows® Diagnostic Software

Pc-Check Windows challenges the widest testing landscape with Windows and WinPE based testing, dedicated to all your PC assembly, integration, services, installations, repair and refurbishing.

Unreliable testing of computers cost companies and technicians valuable time and money. Inaccurate test results impact operations, leading to more technical support calls, unnecessary rework, product returns and customer dissatisfaction. Proof of build and service has now become a requirement.

Pc-Check® Windows® has a testing advantage with Windows-based computers. Fully compatible with **Windows 10 and UEFI hardware, booting WinPE**, ensuring components from a PC and Mac® are reliably validated in the environment in which they are used. Pc-Check Windows computer diagnostics give you the stress testing you expect, but more to the point, they give you absolute knowledge of hardware conditions – results you can count on. Proven diagnostics, capable of assisting all sizes of companies and skill sets, loads of testing features and unlimited ways of using them.

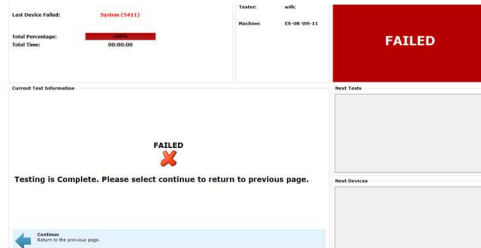


Pc-Check Windows is the answer to solving your testing dilemmas – “do I release, repair, repurpose, refurbish or replace?”. Enhance your service reliability and computer quality, decrease technical support telephone calls, and improve customer satisfaction and confidence. **Pc-Check Windows finds the hardware faults that other test products can't or won't reveal.**

- | | |
|--|--|
| Powerful, testing under Microsoft® Windows® | ✓ Test all Windows dependent hardware: such as webcams, 3D Graphics, wireless network devices, and more. |
| Test UEFI enabled hardware in Windows® | ✓ Full UEFI testing on all the latest Windows® PCs, 64Bit hardware. No need to disable Secure Boot. |
| Integrate 3rd party UEFI tools | ✓ Thoroughly test PC hardware before launching BIOS flashing or DMI tools in the same session. No need for multiple media or programs. |
| Scripted or selected: System Stress test and Burn-in test, Duration, any Number of passes | ✓ Test hardware parts, as specialist test groups or with unlimited scripting capacities. Total control of your diagnostic process. Reveal hard-to-find intermittent errors. |
| Test the fullest range of installed components and storage | ✓ Unlimited Memory DIMM reporting; and 2-Exabytes drives; plus CPU packages to 1024 to 256 core and more in Windows. |
| Unattended testing, launch scripts automatically, upon startup | ✓ Test PCs without users involved, no mistakes in tests deployed, consistent, repeatable results. |
| Create, and test PCs and Macs from self-booting WinPE media | ✓ Test PCs, even Macs before you install the operating system. |

Use Windows®-based tests to fully validated UEFI enabled components as well as non-UEFI hardware

Blue Screen Of Death Test



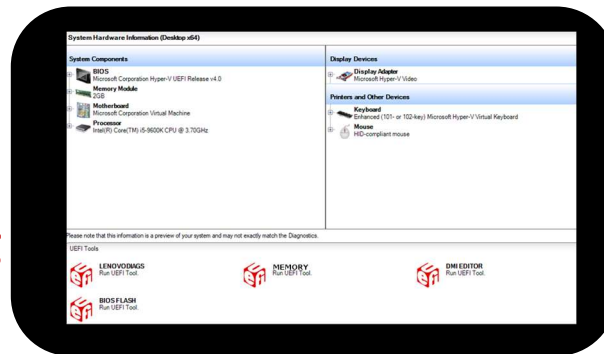
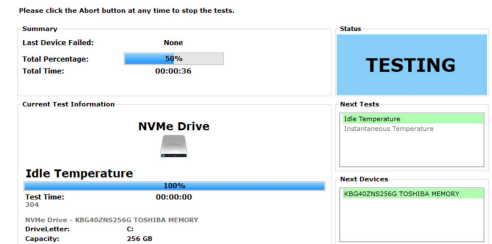
Session Log of Test Results

View Session Log

Results Summary		Time	General Information
Failures:	0	Started: 2:22:12 PM	
Passes:	15	Ended: 2:22:58 PM	
Others:	13	Total: 00:00:46	
Total:	28		

Test Results	
Group-Device-Test	Result
Intel(R) Core(TM) i5-2450M CPU @ 2.50GHz-Multi-core	PASSED
Intel(R) Core(TM) i5-2450M CPU @ 2.50GHz-Multi-processor	INAPPLICABLE
Intel(R) Core(TM) i5-2450M CPU @ 2.50GHz-Core Priority	PASSED

NVMe Idle Temperature



500+ Tests
31 Test Groups
Unlimited Scripting

Add Unlimited
UEFI Vendor
Tools

Test PCs and Macs outside of Windows and Linux® with USB Booting WinPE

'WinPE Image Creator' application prepares custom, self-booting WinPE test media.

Use Windows Preinstallation Environment (WinPE) with Microsoft OEM / SDK license

Variable Media and Settings

Create WIM, ISO and WinPE Bootable USB.

Utilize Microsoft ADK version 8.1 /10.

Customize image settings for image type, region, and more.

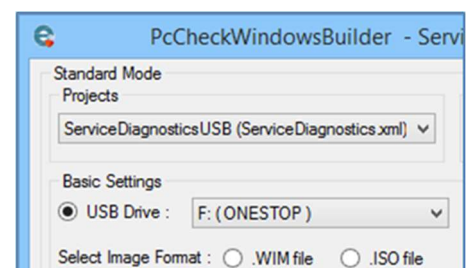
Unlimited script and image builds.

Create and Automate Test Tools

Add 3rd-party vendor tools such as BIOS and DMI. Create different diagnostic test routines for manufacture, refurbishing, service and support.

Fully networkable, allows deployable and remote testing sessions.*

Network drive logging for connectivity and distribution of test result files.



Maximize profits by reducing hardware return costs

- Reduce asset identification, assembly, upgrade, and repair test workloads.
- Reduce returns and repairs.
- Reduce support calls.
- Increase profitability by improving PC reliability during system manufacturing integration, installation, upgrading and servicing, repairs and refurbishing.

Control and contain errors

- Reveal hard-to-find intermittent errors.
- Log faults and unreliable computers.
- Deploy tests, operations' wide, for maximum consistency.

Increase throughput by reducing human errors

- Standardized test scripts control unauthorised users and test usage.
- Remotely coach technical support with simple Pc-Check test script experience.

Microsoft Windows Support

- Windows 7/8/8.1/10.
- Windows® Preinstallation Environment (WinPE- 32bit and 64bit editions) with Microsoft OEM license.
- Server 2003/2008(R2)/2012(R2) for remote deploy* and PC Builder license.
- UEFI enabled hardware.
- Standalone, bundle, deployable diagnostics.

*Site License required.

Diagnostic coverage for all major hardware groups in a native UEFI pre-boot, Self-Boot and Microsoft Windows or Microsoft Windows Preinstallation Environment.

Native UEFI Diagnostics

Network

Ping Test

Self Test

ICMP

Hard Drives

S.M.A.R.T. immediate

S.M.A.R.T. Short Self Test

S.M.A.R.T. Conveyance

S.M.A.R.T. Extended Self Test

Butterfly Seek

Random Read

Linear Read

Standby

Non-Destructive Write

Internal Cache

Intelligent Scan

Solid State Drives

Linear Read

Random Read

S.M.A.R.T. Immediate Test

S.M.A.R.T. Short Self Test

S.M.A.R.T. Extended Self Test

S.M.A.R.T. Conveyance

Internal Cache

Intelligent Scan

S.M.A.R.T. Wear Levelling

Memory

Block Rotation

Quick

Stride

Seating

Inversion Tree

Microtopology

Pseudo-random Data

Pseudo-random Address

BIOS Fault Detection

NVMe Drives

Random Read

Linear Read

Internal Cache

S.M.A.R.T. Health

Intelligent Scan

System Block Devices

Linear Read

Random Read

Intelligent Scan

System Information

System Overview

PCI Information

SMBIOS Information

System Variables (NVRAM)

Graphics Card

Display Memory

Processor

Core Instruction Set

Floating Point Instruction Set

SSE All Revisions

AVX All Revisions

Pairing Symmetry

Execution Symmetry

Cache Coherency

Cache Memory

Serial Ports

Line Control

Handshake

External Loopback

Internal Loopback

FIFO

Divisor Clock

Endurance

Audio

Direct PCM

Stream PCM

Keyboard

Keyboard Test

Keyboard Lights

System

Stress

Boot Variable Check

Optical

Linear Read

Random Read

Butterfly Seek

Deep Read

Laser Refocus

USB

Quick Test

NRZI Max Bit Stuffing

NRZI Glitch Zero

NRZI Oscillation Type 1/2/3/4

Max Disparity

Random Data

Motherboard

Memory Buses

PCI Buses

Disk Buses

Non-Volatile Storage

Real Time Clock

Monitor

Panel Test

Touch Device

Touch Test

Trusted Platform Module

Basic Functionality

Mouse

Mouse Test

Self-Boot Legacy Diagnostics

Memory

Module Seating

Inversion Tree

Stride Isolation

Small Block Stride

Chaotic Addressing

Block Rotation

Microtopology

Microtopology (Quick)

Microtopology (long)

Hard Drives

Read Quick/Standard/Full/Custom

Read Verify Quick/Standard/Full/

Custom

Non-Destructive Write Quick/Standard/

Full/Custom

Destructive Write Quick /Standard/Full/

Custom

Mechanics Stress Quick /Standard/

Full /Custom

Internal Cache

Standby

Performance

Standby

S.M.A.R.T. Immediate

S.M.A.R.T. Short

S.M.A.R.T. Extended

S.M.A.R.T. Conveyance

SSD Drives

Read Quick/Standard/Full/Custom

Read Verify Quick/Standard/Full/

Custom

Non-Destructive Write Quick/

Standard/Full/Custom

Destructive Write Quick/Standard/

Full/Custom

S.M.A.R.T. Immediate

S.M.A.R.T. Short

S.M.A.R.T. Extended

S.M.A.R.T. Conveyance

Performance

NVMe Drives

Read Quick/Standard/Full/Custom

Read Verify Quick/Standard/Full/

Custom

Non-Destructive Write Quick/

Standard/Full/Custom

Destructive Write Quick/Standard/

Full/Custom

S.M.A.R.T. Immediate

S.M.A.R.T. Short

S.M.A.R.T. Extended

S.M.A.R.T. Conveyance

Performance

Processor

Core Instruction Set

AMD64 Core

Intel64 Core

Coprocessor Core

Known Design Faults

3DNow! Extensions

MMX Extensions

SSE (SIMD) Extensions

Multi Processor Symmetry

Motherboard

DMA Controller

System Timer

Interrupt Controller

Keyboard Controller

PCI Bus

Real-Time Clock Chip

Trusted Platform Module

Self Test

Subversion Attempt

Input Peripherals

Keyboard

Mouse

Video Memory

Inversion Tree

Stride Isolation

Small Block Stride

Chaotic Addressing

Inverse Mesh

Block Rotation

Microtopology

FireWire

Controller Test

Cache Memory

Inversion Tree

Stride Isolation

Chaotic Addressing

Block Rotation

Microtopology

Component Audit

Compare

Audio

Real-time PCM

Streaming PCM

SPDIF Run DMA

Internal Speaker

Beep Test

PCI Express

Link Width Configuration

Video Adapter

Colour Purity

True Colour

Alignment

LCD

Test Card

Optical

Transfer

Random Seek

Test Disc Read

Laser Refocus

ATA Controller

Parallel

Serial

Serial Ports

Line Control

Handshake

Loop-back

Internal FIFO

Internal Loop-back

Divisor Clock

Windows Diagnostics

Parallel Ports

Data Port/ External Loop-back
Status Register

Memory

Quick
Pseudo Random Data
Walking Bit Left/ Right
Inverse Walking Bit Left/Right
Chequerboard
Bit Stuck High/Low
Pseudo Random Address

Microtopology

Memory Mismatch

Data Route

[Windows Built-in Diagnostics](#)

Gyroscope

[Quick Status/Core Recognition](#)
[Simple Roll Test/Gyroscope Roll](#)
[Noise](#)

Accelerometer

[Core Recognition/Quick Status](#)
[Acceleration/Noise](#)

Location

[Core Recognition/Quick Status](#)
[Location](#)

Bluetooth

Device Search

Device Pairing

Network

Configuration
IPv4 Connection
[Wireless Strength](#)
[Wireless Connection](#)
System Connected
Ethernet Connectivity
Loopback
Intel Adapter ID
Intel Hardware EPROM/FIFO/Register/
Interrupt
Intel Loopback Connection
Intel external Loopback
Intel Link Speed Duplex
Intel Link Speed Duplex Offline
Intel Cable Length
Intel Cable Polarity
Intel Local Receiver
Intel Cable Quality
Intel Ping

Hard Drives

Butterfly Seek
Random Read,/Linear Read
S.M.A.R.T. Failure/S.M.A.R.T. Short
S.M.A.R.T. Conveyance
S.M.A.R.T. Extended
Idle Temperature
Instantaneous Temperature
S.M.A.R.T. Threshold
S.M.A.R.T. Custom
Drive Health/Drive Overall Health
Intelligent Scan

Optical

Linear Read/Random Read
Advanced Movement
Media Erase
Directory Write/ISO Image Write
Media Eject

NVMe Drive

Random Read/Linear Read
S.M.A.R.T. Failure/Idle Temperature
Instantaneous Temperature
Intelligent NVM Scan

USB

Detected Devices
Connectivity
Quick Test
NRZI Max Bit Stuffing
NRZI Glitch Zero
NRZI Oscillation Type 1/2/3/4
Max Disparity/Random Data/Speed
Connection Verification

Floppy Drives

Butterfly Seek/ Linear Read
Read Write/Media Change
Write Protect

Monitor

Red /Green/Blue Purity
Mesh/Inverse Mesh
White MEME/ Green MEME
Tonality /Grid/ LCD Dead Pixel
Monitor Count
Internal Monitor Count
VGA/DVI/HDMI Monitor Count
Display Port/USB-C Monitor Count
Wireless Monitor Count
EDID Checksum
Monitor Brightness

Serial Ports

Configuration Registers
Quick Loop-back/Baud Rates
Sustained Loop-back
Priority Transmit/Endurance

Removable Media

Linear Read/Random Read
[Connectivity](#)/Media Bad sector
Fake Detection

System

[Stress/Sleep/Hibernate](#)
[Quick Blue Screen Dump](#)

Lid Detect

[Convertible System](#)

Operator Response

[Blue Screen Event](#)

Battery

Voltage/Performance/Quick State
Core Recognition
Advanced State
Charge Level/Charge Life

Compass

[Core Recognition /Quick Status](#)
[Direction](#)

Optical

Linear Read/Random Read
Advanced Movement
Media Erase
Directory Write/ISO Image Write
Media Eject

Trusted Platform Module

TPM Presence Test/Self Test

Processor

Core Instruction Set
Floating Point Instruction Set
SSE/2/3 /4.1/4.2/4A Instruction Set
Cache Functionality
Multi-core/Multi-processor
Core Priority
Thermal Stress/Power Stress
CPU Fan Test
CPU Temperature
AVX Instruction Set
SSSE3 Instruction Set
FMA3/FMA4 Instruction Set
CLMUL Instruction Set
AES Instruction Set

Audio

Audio Connection
[Loop-back Count](#)
[Advanced Quality](#)
[Quick Microphone](#)
[Quick System Sound](#)
[Volume Change/Playback](#)

Graphics Card

Linear Memory
[Microtopology Memory](#)
[Chaotic Addressing Memory](#)
[Hardware Acceleration](#)
Graphics Card Temperature
[Default Driver](#)
OpenCL Bandwith
OpenCL Walking Zeros/Ones
OpenCL Moving Inversion
OpenCL Integer Logic
OpenCL Integer Logic -Local Memory
OpenCL Random
OpenCL Modulo
CUDA Bandwidth
CUDA Walking Zeros/Ones
CUDA Moving Inversion
CUDA Integer Logic
CUDA Integer Logic - Local Memory
CUDA Random
CUDA Modulo
CUDA Compute
CUDA Stress
GPU Driver Crash

Video Capture

Capture Driver
[Composite Capture Driver](#)
[S-Video Capture Driver](#)
[TV Capture Driver](#)
[RGB Capture Driver](#)
[Capture/Composite Capture](#)
[S-Video Capture](#)
[TV Capture/RGB Capture](#)
[Image Quality](#)
[IR Camera Presence](#)

Biometric

[Core Recognition](#)

RAID

Linear Read

FireWire

IEEE 1394

Motherboard

North-bridge/South-bridge
CMOS Clock/CMOS Checksum
CMOS Battery
System Fan
Voltage Core Detection
System Temperature

Operating System

[License/Event Log](#)
Kernel Response
[Driver/Signed Driver](#)
Security Support
Time Service Check
System Files check
Windows 11 Compatability

Hardware Monitor

System Temperature
CPU Temperature
CPU Fan
System Fan
Voltage Core Detection Test
Drive Temperature
Graphics Card Temperature
Graphics Card Temperature

Solid State Drives (SSD)

Linear Read/ Random Read
S.M.A.R.T. Failure/S.M.A.R.T. Short
S.M.A.R.T. Conveyance
S.M.A.R.T. Extended
Idle Temperature
Instantaneous Temperature
S.M.A.R.T. Threshold
S.M.A.R.T. Custom
Wear Range Delta
Drive Health/Drive Overall Health
Intelligent Scan

Touch Screen

Pen Grid/Pen Axis/ Pen Accuracy
Touch Multi-Touch/ Ghost-Touch
Touch Path Continuity
Touch Curve Continuity
Touch Primary Touch
Touch Width/Touch Grid
Touch Axis,/Touch Accuracy
[Touch Gesture](#)

Keyboard

Keyboard Zone/Keyboard LED
Keyboard Dock Detach
Keyboard Map/Ghost Key
Keyboard Connection

Pointing Devices

Quick Mouse/Mouse Button
Movement/Jitter

Ambient Light

[Core Recognition/ Quick Status](#)
[Ambient Light Level](#)

Server

IPMI System Event Log
IPMI Health/ Sensor/ Alarm
Temperature Sensor
Fan Sensor/Voltage Sensor
Power Sensor/Constant Sensor

The test groups or tests noted in [BLUE](#) require a full Windows environment. Example (see above for all): Video | Biometric Devices | Capture Card* | Network Interface tests for wireless network interfaces | System Sleep Test | System Hibernate Test | Battery Voltage Test | Server Group | Sensors *Generic Capture Driver Test available in Microsoft Windows Preinstallation Environment (WinPE). Eurosoft test accessories required for peripheral ports and media trays: USB, serial, audio, DVD/CDROM. Mac® Boot Camp® drivers required in WinPE or use Pc-Check® WinPE Image Creator build tool without drivers (all tests non-native, Intel Architecture only). 3rd-party vendor tools must be UEFI compatible.

Who Uses the Pc-Check® Diagnostic Software Suite?

Solutions for an ever changing landscape...

Testing PCs has financial reward. Starting with a series of simple test steps, you gain immediate cost savings.

Computer manufacturing and system integrating rely on diagnostics to form standard test practices. Repair, services and support are blending with field technicians, backing MSP's who remotely manage all varieties of computers. Critical assessment of systems situated publicly: government, military, education, healthcare, as well as private verticals expect compliant, running systems. Refurbishing has taken off, extracting re-workable components to balance a broad eco-system, recycling where they can't. Everywhere, demand for reliably running PCs is required and expected.

Ensuring reliability requires quality testing. The Pc-Check diagnostic suite takes on the widest testing landscape, instilling quality, combining bare-metal UEFI and legacy testing, plus Microsoft Windows/WinPE too. The end result: components are reliably tested and validated independent of the operating system [and] within the Microsoft Windows environment whether new or old devices. Proven diagnostics, capable of assisting all sizes of companies and skill sets, loads of testing features and unlimited ways of using them. **Testing brings reward.**

Manufacturing

OEM/ODM
System Builders
Assemblers
System Integrators

Manufacturers and system integrating of all sizes, those who build fresh and new, use the PC Builder Test™ Management Suite and Pc-Check® diagnostic suite to validate new hardware and system configurations prior to investing time in loading an operating system, and shipping to the channels.

Refurbishing

Microsoft Authorised Refurbishers
ITAD
Rentals and Leasing
Recyclers

Refurbishers, eco-committed, re-manufacturing, repurposing or IT asset disposing PCs, use PC Builder™ and Pc-Check® suites to quickly and reliably validate inbound and out-bound hardware assets for suitability of reuse, before upgrading, re-imaging and hard drive data erasing with Eurosoft's ZeroData™ Windows® drive erasure software.

Services

Break-Fix Operations
Field Technicians
Computer Shops
Consultants

Servicing has a wide commitment, bringing consumers and industry closer to the repair process. The full Pc-Check® suite brings portable testing to the PC with pre-boot options, multiple script creation, and recordation, reaching a variety of PCs and diverse customers. ZeroData™ Windows® securely clears data.

Support

Network Administrators
I.T. Professionals
Managed Service Provider
Help Desk

Support can involve deployment and online technical sessions. Preventative maintenance, secure hardware platforms and rapid diagnosis for disaster recovery is required. Each Pc-Check® program gives a fast and flexible approach to assessing hardware issues at the start, and end point of a support session.

Flexible user and licensing options to perfectly fit your costs and needs.

Eurosoft (UK) Ltd are dedicated to offering a variety of diagnostic and test management solutions as standalone packages, bundled with systems and services, as well as site licenses of all sizes. Fully commercially supported, and maintained to test the widest range of PC-based hardware, regardless of brand. Whether you are responsible for 1, 100 or 1000+ test stations or have as many technicians at your disposal, the Pc-Check diagnostic suite offers flexible testing solutions, giving you maximum reliability over your entire operation.

Contact us at the locations below to take advantage of a new testing experience today.

Eurosoft (UK) Ltd
3 St. Stephen's Road,
Bournemouth,
Dorset, BH2 6JL
United Kingdom

www.eurosoft-uk.com
Tel: +44 (0)1202 297315
Fax: +44 (0)1202 558280

Eurosoft (US) Inc.
706 Jackson Street
Sioux City, Iowa, 51105
USA

www.eurosoft-us.com
Tel: +1 (712) 255 7483
Fax: +1 (866) 615 9384