

## Pc-Check® Windows® V3.3.2.10

### TRENDING...New eTestManager

Inspired by you! Simply plug in your Eurosoft USB program device and follow the instructions to connect to the Eurosoft license hub. Never miss out on another update again.

Pc-Check® Windows® has 1000's of test features and scripts to help you ensure reliable PC hardware. There are loads of assets in each PC, ready to spring into action. Take advantage of using the Motherboard Serial Number to track the PC's you test. Think GPU's, CPU's, memory, SSD/HDD -- stress test them and you'll soon know what's available to sell on again. Deliver only the very best — you can with the Pc-Check® tools. Make Earth Day arrive every day of the year. Test those PCs, knocking out which hardware continues to be used, and what gets replaced. Help save our resources.

## Awesome reminders, only Eurosoft do these...

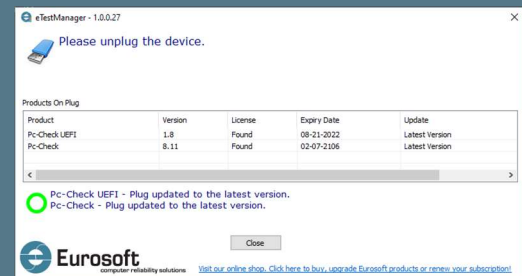
**Test more memory than other Windows-based diagnostic tools** – Unlimited DIMM reporting 512Gb (W8.1) to **1TB memory** (W10, 64Bit); and **2-Exabyte drives; 256 core CPU** packages, video, and UEFI enabled hardware.

**1<sup>st</sup> place** – Longest running diagnostic company – 40+ years – with spectacular results from the first-on-the-scene **Micro-topology** memory testing, and our original 'self-boot' capability in 1986!

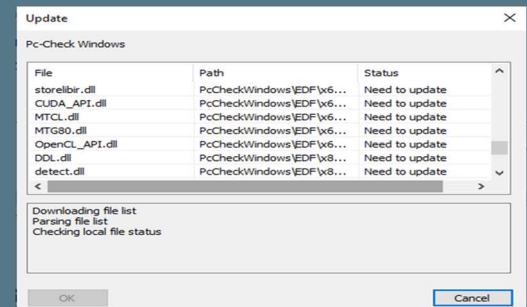
Pc-Check® Windows® features	Benefits for You
<i>New eTestManager</i>	Inspired by you! Simply plug in your Eurosoft USB program device and follow the instructions to connect to the Eurosoft license hub. Never miss out on another update again.
<i>Updated CPUID</i>	<p>Greater test coverage for the latest hardware including Glenfly Arise-GT10C0 GPU.</p> <p>Intel Core i9-12900T, Core i5-12600T (35W).</p> <p>Intel Atom x6427FE, x6425RE, x6425E, x6414RE, x6413E, x6212RE, x6211E, x6200FE (Elkhart Lake, FCBGA1493).</p> <p>Intel Pentium J6425, N6415 (Elkhart Lake, FCBGA1493).</p> <p>Intel Celeron J6413, N6211 (Elkhart Lake, FCBGA1493).</p> <p>Preliminary support for Intel ARC 3/5/7 (DG2).</p> <p>Preliminary support for Intel Raptor Lake (13th gen).</p> <p>AMD Ryzen 7 5700X, Ryzen 5 5600/5500.</p> <p>AMD Ryzen 3 5300GE, Ryzen 3 PRO 5350GE, Ryzen 5 PRO 5650GE, Ryzen 7 PRO 5750GE (Cezanne).</p> <p>AMD Ryzen 9 6980HX, 6900HX, Ryzen 7 6800H, Ryzen 5 6600H (45W).</p> <p>AMD Ryzen 9 6980HS, 6900HS, Ryzen 7 6800HS, Ryzen 5 6600HS (35W).</p> <p>AMD Ryzen 7 6800U, Ryzen 5 6600U (15-28W).</p> <p>AMD Ryzen 7 5825U, Ryzen 5 5625U, Ryzen 3 5425U (15W).</p> <p>AMD Rembrandt &amp; Raphael APUs (RDNA2).</p> <p>AMD Mendocino APU (Zen2 + RDNA2).</p> <p>AMD Radeon RX 6850M XT GPU (NAVI22).</p> <p>AMD RX 6800S, RX 6700S, RX 6650M, RX 6650M XT GPUs (NAVI23).</p> <p>NVIDIA GeForce RTX 3090 Ti GPU (GA102-350, 450W).</p>

## Product Announcement Pc-Check® Windows®

eTestManager



### Automatic Product Updates



### Windows® Compatibility



### Like what you see?

Combine **Pc-Check® UEFI** and **Pc-Check®**, the ultimate bare metal testing solution with **Pc-Check® Windows®**, expanding your range of diagnostics to a perfect 3-point test plan.

FREE Updates and technical support provided automatically for one year. Keep your hardware testing methods current. Upgrade to the latest version of **Pc-Check® Windows®**

### ALL FEATURED UPDATES

[www.eurosoft-uk.com](http://www.eurosoft-uk.com)

## Previous Release Highlights

<i>Windows® compatibility test</i>	Confirms PC system/devices are ready for Microsoft Windows® 11 installation, as well as ensuring your chosen PC hardware meets system requirements before upgrading hardware and operating systems.
<i>Overall drive health test</i>	Quickly compare storage devices' estimated health, assessing configured health percentages using S.M.A.R.T. attribute values with proprietary interrogation.
<i>GPU driver crash test</i>	Use detailed event logs to report on graphics card driver crashes that have occurred in the time span specified by you or in pre-defined tests.
<i>Updated CPUID</i>	Greater test coverage for the latest hardware including Intel Core i9 12900K, Core i7 12700K and Core i5 12600K "Alder Lake" CPUs, and Intel Z6xx platform. DDR5 memory SPD and XMP 3.0 support. AMD Radeon 6600XT GPU AMX instruction set and AMD 4700S CPU. .
<i>Mouse testing</i>	Updated mouse testing to extend testing to both left and right buttons.

**Combine Pc-Check® UEFI and original Pc-Check® Self-boot for the ultimate 'bare-metal' testing solution alongside Pc-Check® Windows®, expanding your range of diagnostics to a perfect 3-point test plan.**



**Developing intricate computer diagnostic software – because other hardware tests miss them completely – Pc-Check® Windows® is indispensable.** Count on a continued flow of reliable test results whether building, installing, supporting or servicing computers. Pc-Check® Windows® offers the greatest support for testing a multitude of new or legacy devices both pre-boot WinPE or full Windows operating system.

**Eurosoft has helped to find millions of computer failures since 1980. No exaggeration! Celebrating 40+ years — with success from our exceptional customers.**

NOTE: \*WinPE has reduced driver support limiting its test function. The full Windows operating system is required for certain device driven hardware.

**Eurosoft (UK) Ltd**  
Tel +44 (0)1202 297315  
Fax: +44 (0)1202 558280  
www.eurosoft-uk.com

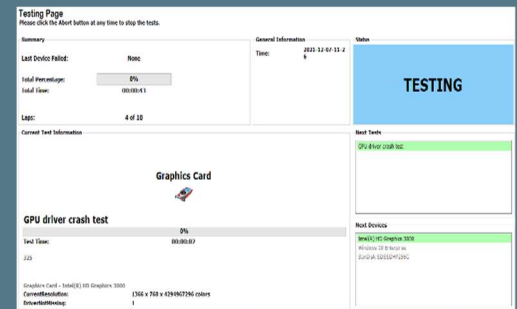
**Eurosoft (US) Inc.**  
Tel +1 (712) 255-7483  
Fax: +1 (866) 615-9384  
www.eurosoft-us.com

**SEND US YOUR IDEAS....**

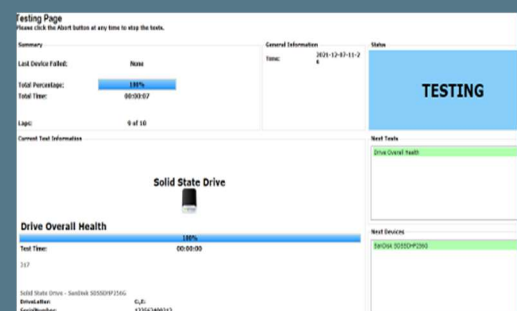
[Support and Feature Requests](#)

## Product Announcement Pc-Check® Windows®

### Graphic Testing



### Overall Drive Health



Diagnostics out of date? Other tools not meeting your demands? Call us to discuss your testing needs. Visit our website to order all the Pc-Check® diagnostic suite at any time. Site licenses, special development and quantity discounts available. DATA ERASURE — ZeroData™ Windows® is ready for you.



© Eurosoft (UK) Ltd. 1988-2021. Pc-Check is a registered trademark of Eurosoft (UK) Ltd. PC Builder, Pc-Check UEFI, Pc-Check Windows, Pc-Check Virtual Pc-Check, ZeroData, ZeroData Windows, USB Preferred Port Plug, CDT, DVD/DT, EuroDOS are trademarks of Eurosoft (UK) Ltd. All other product trademarks are recognised as belonging to their respective owners. REV0522KH

Note: Windows PE v1.x contains a security feature that will cause end user's systems to reboot without prior notification to the end user after 24 hours of continuous use. Windows PE v2.x contains a security feature that will cause end user's systems to reboot without prior notification to the end user after 72 hours of continuous use.