

## Pc-Check® UEFI v1.9

**PREMIUM RELEASE...** All new Stress Testing approach ensures robust, system load testing to prove hardware stability across memory, CPU cores, video and more. Includes new boot variables to confirm NVRAM are not corrupted. You asked for more reports – try out the new QR codes to present test failures, plus the addition of CVS formats and original XML options. It's a nice, big release well worth your testing time.

**Pc-Check® Self-boot is included with Pc-Check® UEFI. Read on...**

### Awesome reminders, only Eurosoft do these...

Pc-Check UEFI diagnostics identify your hardware failures – **precisely**. Unlike other so called UEFI diagnostics, Pc-Check® UEFI diagnostics directly access and test essential UEFI components, regardless of BIOS or brand. **NO operating system in the way – NO Linux, NO Windows, NO secure boot issues – only UEFI testing in pure native mode.**

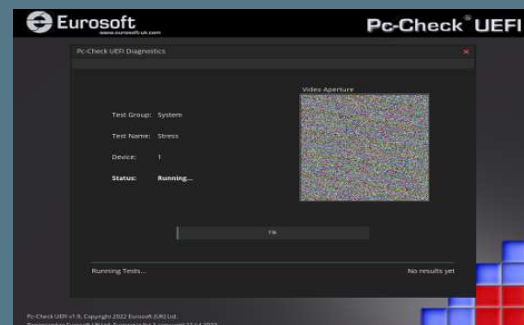
Test more memory, drives and CPUs like no other diagnostic tool – remarkable **256 DIMM up to 2-Exabytes memory**, and **'Multi-Exabyte' drives**, plus **1024 'Kilo-core' CPU packages** and *more tests coming...*

**1st place** – Longest running diagnostic company – 40 years – with spectacular results from our Micro-topology memory testing, and the original 'self-boot' capability in 1986!

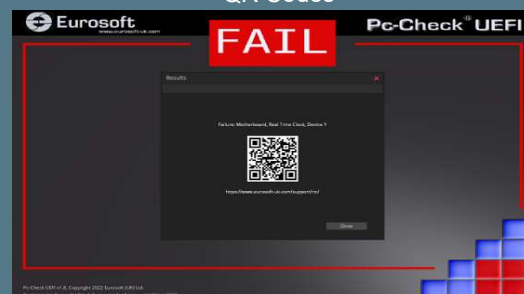
Pc-Check® UEFI Features	Benefits for You
<b>NEW</b> System test group stress test	Stress test a system across all processor packages and cores, all memory, all fixed media devices and video memory. Stress testing emphasises systems' robustness, and error handling under a heavy load, ensuring system stability in use.
<b>NEW</b> System test group boot variables check	Confirm that configured boot options in NVRAM are not corrupted and point to valid devices.
<b>NEW</b> QR codes	Display QR codes for test failures configured to display custom URLs for troubleshooting information or customer support pages.
<b>NEW</b> Intel VT-d/ AMD IOMMU virtualization support	Greater test stability. Normally disabled in most UEFI BIOS by default, but can cause some tests to time out and fail if enabled, E.G. SMART testing. By adding support, tests will always work and this option will not need to be disabled for diagnostic sessions.
<b>New</b> Mouse pointer display options	When using a keyboard only toggle the mouse pointer off with the F6 key so that it does not block any test information.

## Product Announcement Pc-Check® UEFI

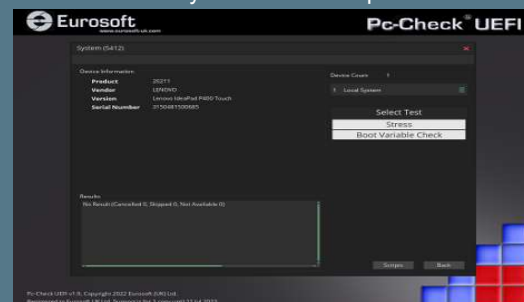
### Stress Test



### QR Codes



### System Test Group



*Like what you see?*

Combine Pc-Check® UEFI and Pc-Check®, the ultimate bare metal testing solution with Pc-Check® Windows®, expanding your range of diagnostics to a perfect 3-point test plan.

FREE Updates and technical support provided automatically for one year. Keep your hardware testing methods current. Upgrade to the latest version of **Pc-Check UEFI**

**ALL FEATURED UPDATES**

[www.eurosoft-uk.com](http://www.eurosoft-uk.com)

**Eurosoft (UK) Ltd**  
Tel +44 (0)1202 297315  
Fax: +44 (0)1202 558280  
[www.eurosoft-uk.com](http://www.eurosoft-uk.com)

**Eurosoft (US) Inc.**  
Tel +1 (712) 255-7483  
Fax: +1 (866) 615-9384  
[www.eurosoft-us.com](http://www.eurosoft-us.com)

## Pc-Check® UEFI Features

## Benefits for You

<b>Updated Results Screen</b>	Immediately see test failures. Failed groups are now ordered first in on screen results, mostly eliminating the need to scroll.
<b>Updated UEFI Boot loader</b>	Provides increased protection against malware and exploits.
<b>Updated SSD detection</b>	Increased compatibility. Stops some SMR (Shingled Magnetic Recording) HDDs appearing as SSDs instead of HDDs.
<b>Updated Test scripts</b>	The predefined test scripts are already updated with all the new tests, so you can start testing straight away.
<b>Updated PCI Device database</b>	Updates to the PCI Device and Vendor database makes it possible to identify and test more PCI devices than was previously possible.

**Including the original Pc-Check® Self-boot, Pc-Check UEFI offers the ultimate 'bare-metal' testing solution.**

Combine Pc-Check® Windows, expanding your range of diagnostics to a perfect 3-point test plan.



**Developing intricate computer diagnostic software – because other hardware tests miss them completely – Pc-Check UEFI is indispensable.** Count on a continued flow of reliable test results whether building, installing, supporting or servicing computers. Pc-Check UEFI offers the greatest support for testing a multitude of new or legacy devices outside of the operating system.

**Eurosoft has helped to find millions of computer failures since 1980. No exaggeration! Celebrating 40+ years — with success from our exceptional customers.**

NOTE: \*Keyboard, mouse and touch testing require UEFI firmware support. Some BIOS may exhibit known issues that limit test function.

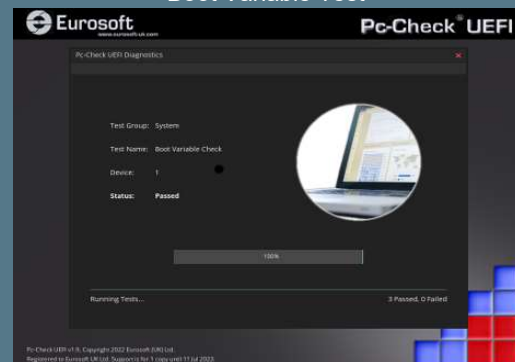
**Eurosoft (UK) Ltd**  
Tel +44 (0)1202 297315  
Fax: +44 (0)1202 558280  
www.eurosoft-uk.com

**Eurosoft (US) Inc.**  
Tel +1 (712) 255-7483  
Fax: +1 (866) 615-9384  
www.eurosoft-us.com

## Graphics Card Testing



## Boot Variable Test



## Test Errors & Troubleshooting

Errors and Troubleshooting	
Serial Ports - Serial Port	
FIFO - Not Available	
0x00/3FF-0045	The test cannot be executed because something is missing.
Most likely a loopback plug was not detected at the port.	
Serial Ports - Serial Port	
FIFO - Not Available	
0x00/3FF-0045	The test cannot be executed because something is missing.
Most likely a loopback plug was not detected at the port.	
Network Interface - Intel(R) Ethernet Connection (2) I218-V	
ICMP - Failed	
0x02/3FF-0003	IP v4 conversion error. IP address in configuration file is not in correct format.
The device may be faulty. Check that all prerequisites were met correctly.	

Diagnostics out of date? Other tools not meeting your demands? Call us to discuss your testing needs. Visit our website to order all the Pc-Check® diagnostic suite at any time. Site licenses, special development and quantity discounts available. DATA ERASURE — ZeroData Windows® is ready for you.



© Eurosoft (UK) Ltd. 1988-2022. Pc-Check is a registered trademark of Eurosoft (UK) Ltd. PC Builder, Pc-Check UEFI, Pc-Check Windows, Pc-Check Virtual Pc-Check, ZeroData, ZeroData Windows, USB Preferred Port Plug, CDT, DVDIT, EuroDOS are trademarks of Eurosoft (UK) Ltd. All other product trademarks are recognised as belonging to their respective owners. REV120722

Note: Windows PE v1.x contains a security feature that will cause end user's systems to reboot without prior notification to the end user after 24 hours of continuous use. Windows PE v2.x contains a security feature that will cause end user's systems to reboot without prior notification to the end user after 72 hours of continuous use.