

Pc-Check® Windows® V3.3.2

TRENDING...Drive Health

“...challenges testing HDD and SSD...” Renew your approach to testing all kinds of storage types. This latest Pc-Check Windows hones in on the inconsistencies of HDD and SSD health. Now you can take advantage of the new Overall Health Test, displaying and reporting on storage health after testing.

Example KB test detail attributed to reallocated sectors set at 20: <LogEvent datetime="2021-09-15T10:13:57+03:00" group="7001" test="315" device="1" message="5" lapcount="1" groupname="Solid State Drive" testname="Drive Health Test" devicename="INTEL SSDSCKGF256A5 SATA 256GB" description="FAILED - 0x1B/098-0077 - 0000000C000000B1"/>. B1 which is 177 in decimal is the attribute ID failing and is not perfect (zero). Attribute 177 is SMART_WEAR_LEVEL_COUNT with a value of 000C decimal 12.

Pc-Check® Windows® has 1000's of test features and scripts to help you ensure reliable PC hardware. There are loads of assets in each PC, ready to spring into action. Take advantage of using the Motherboard Serial Number to track the PC's you test. Think GPU's, CPU's, memory, SSD/HDD -- stress test them and you'll soon know what's available to sell on again. Deliver only the very best — you can with the Pc-Check® tools. Make Earth Day arrive every day of the year. Test those PCs, knocking out which hardware continues to be used, and what gets replaced. Help save our resources.

Awsome reminders, only Eurosoft do these...

Test more memory than other Windows-based diagnostic tools – Unlimited DIMM reporting 512Gb (W8.1) to **1TB memory** (W10, 64Bit); and **2-Exabyte drives**; **256 core CPU** packages, video, and UEFI enabled hardware.

1st place – Longest running diagnostic company – 40+ years – with spectacular results from the first-on-the-scene **Micro-topology** memory testing, and our original 'self-boot' capability in 1986!

Pc-Check® Windows® features

New Windows® compatibility test

Confirms PC system/devices are ready for Microsoft Windows® 11 installation, as well as ensuring your chosen PC hardware meets system requirements before upgrading hardware and operating systems.

New Overall drive health test

Quickly compare storage devices' estimated health, assessing configured health percentages using S.M.A.R.T. attribute values with proprietary interrogation.

New GPU driver crash test

Use detailed event logs to report on graphics card driver crashes that have occurred in the time span specified by you or in pre-defined tests.

Updated CPUID

Greater test coverage for the latest hardware including Intel Core i9 12900K, Core i7 12700K and Core i5 12600K "Alder Lake" CPUs, and Intel Z6xx platform. DDR5 memory SPD and XMP 3.0 support. AMD Radeon 6600XT GPU AMX instruction set and AMD 4700S CPU.

Enhanced Mouse testing

Updated mouse testing to extend testing to both left and right buttons.

Benefits for You

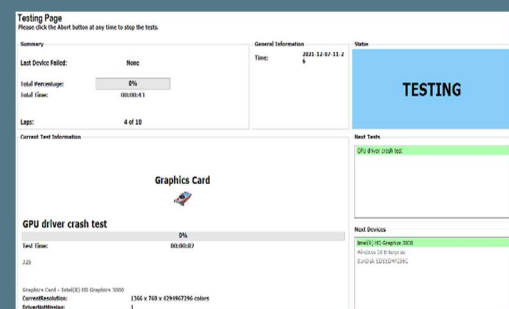
Product Announcement Pc-Check® Windows®

Windows® Compatibility

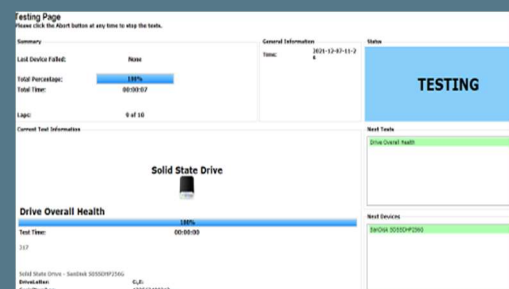
- ✓ 64 bit Architecture check
- ✓ UEFI support check
- ✓ Compatible CPU check
- ✓ Minimum two CPU's or virtual threads
- ✓ Minimum 2 GigaHertz Speed check
- ✓ DirectX Driver Display Interface version, feature check
- ✓ Secure boot support check
- ✓ GPT disk partition check
- ✓ Minimum 4GB memory check
- ✓ 64 GB free disk space check
- ✓ TPM 2.0 support check

PASS

Graphic Testing



Overall Drive Health



Like what you see?

Combine **Pc-Check® UEFI** and **Pc-Check®**, the ultimate bare metal testing solution with **Pc-Check® Windows®**, expanding your range of diagnostics to a perfect 3-point test plan.

FREE Updates and technical support provided automatically for one year. Keep your hardware testing methods current. Upgrade to the latest version of **Pc-Check® Windows®**

ALL FEATURED UPDATES

www.eurosoft-uk.com

Previous Release Highlights

<i>Intelligent Scan</i>	Take advantage of new tests for SSD, HDD and NVMe devices. Using a unique scanning method, testing time of storage devices is dramatically reduced.
<i>Trusted Platform Module tests</i>	Checks the supported TPM specification of the devices present. Initiate device self testing to confirm proper function and production of random keys.
<i>Removable Media Tests</i>	Detect fake devices with a different real capacity than the advertised capacity, and test removable storage for bad sectors.
<i>Keyboard Tests</i>	The Keyboard Map Test provides a full test of a keyboard's key functionality. When presses are detected the corresponding keys are highlighted. Perform the Ghost Key Test to check for any stuck keys or erroneous key presses.
<i>Mouse Tests</i>	Confirm mouse functionality. Check the mouse tracks correctly and the cursor does not jitter.

Combine Pc-Check® UEFI and original Pc-Check® Self-boot for the ultimate 'bare-metal' testing solution alongside Pc-Check® Windows®, expanding your range of diagnostics to a perfect 3-point test plan.



Developing intricate computer diagnostic software – because other hardware tests miss them completely – Pc-Check® Windows® is indispensable. Count on a continued flow of reliable test results whether building, installing, supporting or servicing computers. Pc-Check® Windows® offers the greatest support for testing a multitude of new or legacy devices both pre-boot WinPE or full Windows operating system.

Eurosoft has helped to find millions of computer failures since 1980. No exaggeration! Celebrating 40+ years — with success from our exceptional customers.

NOTE: *WinPE has reduced driver support limiting its test function. The full Windows operating system is required for certain device driven hardware.

Eurosoft (UK) Ltd
Tel +44 (0)1202 297315
Fax: +44 (0)1202 558280
www.eurosoft-uk.com

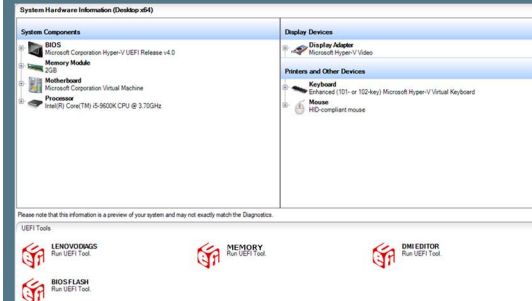
Eurosoft (US) Inc.
Tel +1 (712) 255-7483
Fax: +1 (866) 615-9384
www.eurosoft-us.com

SEND US YOUR IDEAS....

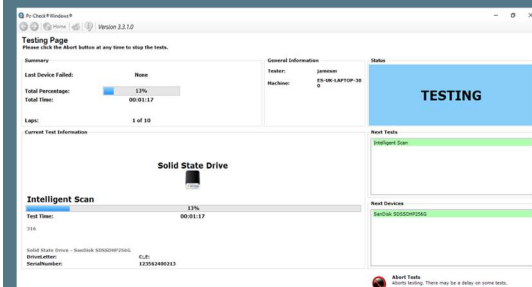
[Support and Feature Requests](#)

Product Announcement Pc-Check® Windows®

Launch 3rd Party UEFI Tools



Intelligent Scan



Diagnostics out of date? Other tools not meeting your demands? Call us to discuss your testing needs. Visit our website to order all the Pc-Check® diagnostic suite at any time. Site licenses, special development and quantity discounts available. DATA ERASURE — ZeroData™ Windows® is ready for you.



© Eurosoft (UK) Ltd. 1988-2021. Pc-Check is a registered trademark of Eurosoft (UK) Ltd. PC Builder, Pc-Check UEFI, Pc-Check Windows, Pc-Check Virtual Pc-Check, ZeroData, ZeroData Windows, USB Preferred Port Plug, CDT, DVDIT, EuroDOS are trademarks of Eurosoft (UK) Ltd. All other product trademarks are recognised as belonging to their respective owners. REV081221KH

Note: Windows PE v1.x contains a security feature that will cause end user's systems to reboot without prior notification to the end user after 24 hours of continuous use. Windows PE v2.x contains a security feature that will cause end user's systems to reboot without prior notification to the end user after 72 hours of continuous use.