

Pc-Check® UEFI v1.08

TRENDING...NEW Processor Testing

Processors have loads of unique characteristics. From our testing view, interrogating the processor is critical to ensure compatibility and correct setting for the entire PC. Check out the new, refined testing approach in the Pc-Check UEFI Processor Test Group, allowing you to select one test for all SSE's and AVX, ultimately saving you test setup time.

Pc-Check® Self-boot is included with Pc-Check® UEFI. Read on...

Awesome reminders, only Eurosoft do these...

Pc-Check UEFI diagnostics identify your hardware failures – **precisely**. Unlike other so called UEFI diagnostics, Pc-Check® UEFI diagnostics directly access and test essential UEFI components, regardless of BIOS or brand. **NO operating system in the way – NO Linux, NO Windows, NO secure boot issues – only UEFI testing in pure native mode.**

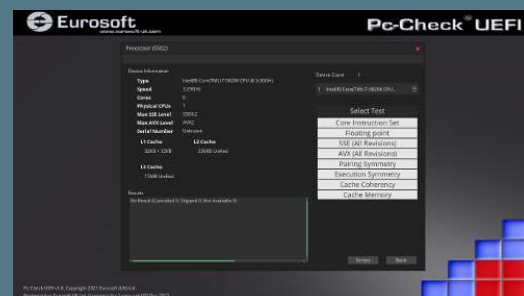
Test more memory, drives and CPUs like no other diagnostic tool – remarkable **256 DIMM up to 2-Exabytes memory**, and **'Multi-Exabyte' drives**, plus **1024 'Kilo-core' CPU packages** and *more tests coming...*

1st place – Longest running diagnostic company – 40 years – with spectacular results from our Micro-topology memory testing, and the original 'self-boot' capability in 1986!

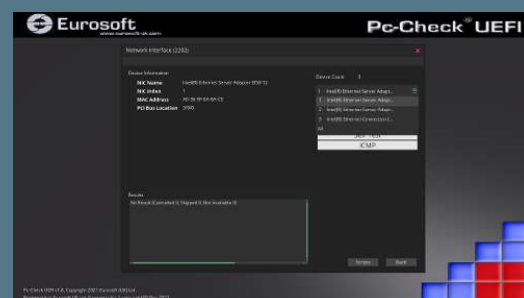
Pc-Check® UEFI Features	Benefits for You
NEW Re-engineered processor test group	Significantly improved Processor group, featuring new AVX testing for all revisions, new Processor Cache Testing, single test option for all SSE revisions, and all new rigorous testing including Core and Floating Point instructions.
NEW 'Quick Test' keyboard templates	Faster keyboard testing with new testing templates used for checking the most important and most commonly used keys.
NEW Results output options	Dual output testing results presented as CVS format alongside XML.
NEW Enhanced Device Display	Device names are included on the device number selection drop down menu. For example: what hard disk model corresponds with device 1, 2, etc.
Enhanced Report information	Now includes test session timing information including start time, end time and duration to provide an audit trail of what was tested and for how long.
Enhanced Startup behavior	More progress bar steps at diagnostics startup - also shows which group number is currently loading.

Product Announcement Pc-Check® UEFI

Processor Testing



Device Display Menu



Advanced Vector Extension Reporting

BIOS	Type	Intel(R) Core(TM) i7-5820K CPU @ 3.30GHz
PROCESSOR	Speed	3.29GHz
MEMORY	Cores	6
FIXED DRIVES	Threads	2
VIDEO	Physical CPUs	1
AUDIO	Logical CPUs	12
NETWORK	Serial Number	Unknown
BUSES	Max SSE Level	SSE4.2
PORTS	Max AVX Level	AVX2
	External Clock	100Hz
	L1 Cache per Core	32KB + 32KB (64KB)
	L2 Cache per Core	256KB Unified
	L3 Cache	15MB Unified (Shared)



Like what you see?

Combine **Pc-Check® UEFI** and **Pc-Check®**, the ultimate bare metal testing solution with **Pc-Check® Windows®**, expanding your range of diagnostics to a perfect 3-point test plan.

FREE Updates and technical support provided automatically for one year. Keep your hardware testing methods current. Upgrade to the latest version of **Pc-Check UEFI**

ALL FEATURED UPDATES

www.eurosoft-uk.com

Eurosoft (UK) Ltd
Tel +44 (0)1202 297315
Fax: +44 (0)1202 558280
www.eurosoft-uk.com

Eurosoft (US) Inc.
Tel +1 (712) 255-7483
Fax: +1 (866) 615-9384
www.eurosoft-us.com

SEND US YOUR IDEAS & ISSUES....

[Support and Feature Requests](#)

Pc-Check® UEFI Features

Benefits for You

Enhanced Timed window pop-up information	Now includes a count down bar for an at-a-glance indication that a message shall automatically continue, and how long you may have to provide a manual response.
Enhanced Processor information	SSE Level and AVX Level Processor attributes displayed as easy to understand text form, e.g. 'SSE4.1' instead of the previous less interpretive numeric value.
Enhanced Network Interface Card testing	Testing support for a wider variety of devices with multiple system NICs.
Enhanced Video memory testing	Increased progress update accuracy while testing video memory.
Updated PCI Device database	Updates to the PCI Device and Vendor database makes it possible to identify and test more PCI devices than was previously possible.

Including the original Pc-Check® Self-boot, Pc-Check UEFI offers the ultimate 'bare-metal' testing solution.

Combine Pc-Check® Windows, expanding your range of diagnostics to a perfect 3-point test plan.



Developing intricate computer diagnostic software – because other hardware tests miss them completely – Pc-Check UEFI is indispensable. Count on a continued flow of reliable test results whether building, installing, supporting or servicing computers. Pc-Check UEFI offers the greatest support for testing a multitude of new or legacy devices outside of the operating system.

Eurosoft has helped to find millions of computer failures since 1980. No exaggeration! Celebrating 40+ years — with success from our exceptional customers.

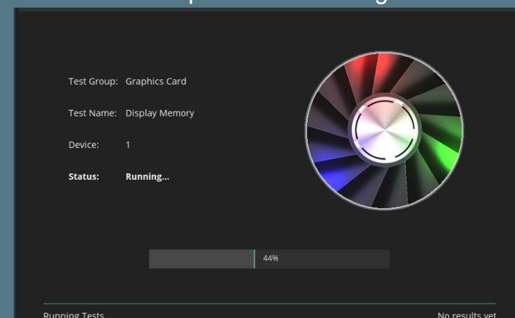
NOTE: *Keyboard, mouse and touch testing require UEFI firmware support. Some BIOS may exhibit known issues that limit test function.

Eurosoft (UK) Ltd
Tel +44 (0)1202 297315
Fax: +44 (0)1202 558280
www.eurosoft-uk.com

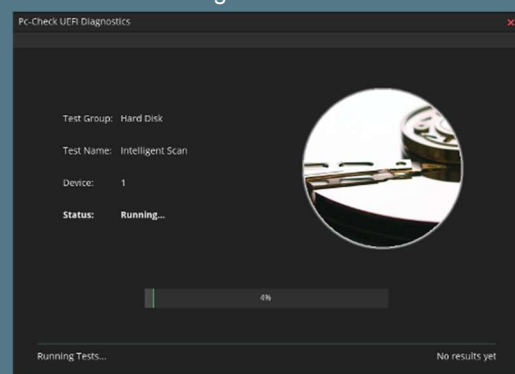
Eurosoft (US) Inc.
Tel +1 (712) 255-7483
Fax: +1 (866) 615-9384
www.eurosoft-us.com

SEND US YOUR IDEAS & ISSUES.... [Support and Feature Requests](#)

Graphics Card Testing



Intelligent Scan Test



Test Errors & Troubleshooting

Errors and Troubleshooting	
Serial Ports - Serial Port	
FIFO - Not Available	
0x003FF-0045	The test cannot be executed because something is missing.
Most likely a loopback plug was not detected at the port.	
Serial Ports - Serial Port	
FIFO - Not Available	
0x003FF-0045	The test cannot be executed because something is missing.
Most likely a loopback plug was not detected at the port.	
Network Interface - Intel(R) Ethernet Connection (2) I218-V	
ICMP - Failed	
0x023FF-0003	IP v4 conversion error. IP address in configuration file is not in correct format.
The device may be faulty. Check that all prerequisites were met correctly.	

Diagnostics out of date? Other tools not meeting your demands? Call us to discuss your testing needs. Visit our website to order all the Pc-Check® diagnostic suite at any time. Site licenses, special development and quantity discounts available. DATA ERASURE — [ZeroData Windows®](#) is ready for you.



© Eurosoft (UK) Ltd. 1988-2021. Pc-Check is a registered trademark of Eurosoft (UK) Ltd. PC Builder, Pc-Check UEFI, Pc-Check Windows, Pc-Check Virtual Pc-Check, ZeroData, ZeroData Windows, USB Preferred Port Plug, CDT, DVDIT, EuroDOS are trademarks of Eurosoft (UK) Ltd. All other product trademarks are recognised as belonging to their respective owners. REV121221

Note: Windows PE v1.x contains a security feature that will cause end user's systems to reboot without prior notification to the end user after 24 hours of continuous use. Windows PE v2.x contains a security feature that will cause end user's systems to reboot without prior notification to the end user after 72 hours of continuous use.