

Pc-Check® Windows® V3.3.1

TRENDING... Windows 11

"I can see clearly now..." once the dust has settled and the new Windows 11 is available to all.

Whether you're using Windows 10 or the up and coming Windows 11, the hardware the operating system is loaded to needs to be stable, without faults, to achieve a reliably running PC. Simple task, sure, though sometimes it's assumed that 'as long as the operating system runs, the PC is good to go.' Not the case for a few reasons. Intermittent faults can reveal themselves when a stress test or burn-in test is performed. Time, plus temperatures rising, components interacting with the operating system — add up to real life user conditions. It doesn't take much to ensure the PCs you sell, trade or have direct responsibility for, are reliable and ready for any situation. **Simple Solution: TEST and TEST to be certain each PC has great hardware, ready for any operating system.**

Pc-Check® Windows® has 1000's of test features and scripts to help you ensure reliable PC hardware. There are loads of assets in each PC, ready to spring into action. Take advantage of using the Motherboard Serial Number to track the PC's you test. Think GPU's, CPU's, memory, SSD/HDD -- stress test them and you'll soon know what's available to sell on again. Deliver only the very best — you can with the Pc-Check® tools.

Awesome reminders, only Eurosoft do these...

Test more memory than other Windows-based diagnostic tools – Unlimited DIMM reporting 512Gb (W8.1) to **1TB memory** (W10, 64Bit); and **2-Exabyte drives; 256 core CPU** packages, video, and UEFI enabled hardware.

1st place – Longest running diagnostic company – 40+ years – with spectacular results from the first-on-the-scene **Micro-topology** memory testing, and our original 'self-boot' capability in 1986!

Pc-Check® Windows® features

New Intelligent Scan

Take advantage of new tests for SSD, HDD and NVMe devices. Using a unique scanning method, testing time of storage devices is dramatically reduced.

New Trusted Platform Module tests

Checks the supported TPM specification of the devices present. Initiate device self testing to confirm proper function and production of random keys.

New Removable Media Tests

Detect fake devices with a different real capacity than the advertised capacity, and test removable storage for bad sectors.

New Keyboard Tests

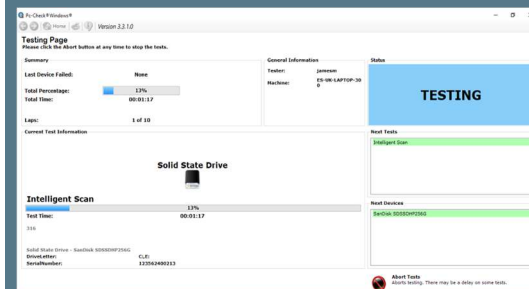
The Keyboard Map Test provides a full test of a keyboard's key functionality. When presses are detected the corresponding keys are highlighted. Perform the Ghost Key Test to check for any stuck keys or erroneous key presses.

New Mouse Tests

Confirm mouse functionality. Check the mouse tracks correctly and the cursor does not jitter.

Product Announcement Pc-Check® Windows®

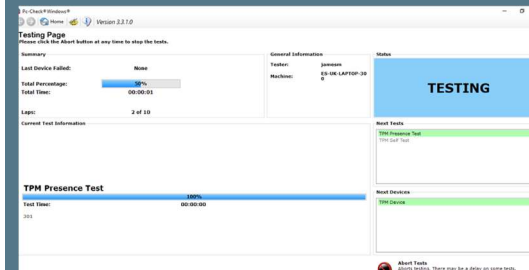
Intelligent Scan



Service Report Health Percentage

System Information Summary	
Operating System	Windows 10 Enterprise x64
Device Package	0
Operating System Version	10.0.19042.0
Install Date	08/03/2021
OS Version	06VC.M024.20120222.LDG (Legacy)
Hardware Information Summary	
CPU	Intel(R) Core(TM) i5-2450M CPU @ 2.50GHz
Memory	7.91 GB/8.00 GB (2/2 Slots)
Memory Slot 1	4.00 GB/ChannelA-DIMM0/BANK 0/04CB/DDR3
Memory Slot 2	4.00 GB/ChannelB-DIMM0/BANK 2/Kingston/DDR3
D Drive	238.47 GB SanDisk SDSSDHP256G 100% Health
Video Card	2108 MB Intel(R) HD Graphics 3000 Sandy Bridge

TPM Testing



Like what you see?

Combine Pc-Check® UEFI and Pc-Check®, the ultimate bare metal testing solution with Pc-Check® Windows®, expanding your range of diagnostics to a perfect 3-point test plan.

FREE Updates and technical support provided automatically for one year. Keep your hardware testing methods current. Upgrade to the latest version of **Pc-Check® Windows®**

ALL FEATURED UPDATES

www.eurosoft-uk.com

Pc-Check® Windows® features

Benefits for You

Enhanced Service report	The PDF Service Report now includes the health percentage information for Battery, SSD and hard drives.
Enhanced Graphic Card Testing	Greater test coverage. It's now possible to perform some tests for driverless video cards.
Enhanced Operating System Testing	Check the integrity of windows® System files and any individual system file for corruption or other issues with the Systems File Check.
Enhanced Memory Testing	Quickly check the Windows® Built-in testing for any result logs within the specified time period.
Enhanced Gyroscope and Accelerometer Testing	Check noise levels in both sensors are within acceptable thresholds.
Updated SMBIOS	SMBIOS update to support High Bandwidth Memory, DDR5 and LPDDR5 memory modules.
Updated CPUID Support	Greater test coverage of the newest processors such as the AMD Ryzen 5600G SPD.

Combine Pc-Check® UEFI and original Pc-Check® Self-boot for the ultimate 'bare-metal' testing solution alongside Pc-Check® Windows®, expanding your range of diagnostics to a perfect 3-point test plan.



Developing intricate computer diagnostic software – *because other hardware tests miss them completely* – Pc-Check® Windows® is indispensable. Count on a continued flow of reliable test results whether building, installing, supporting or servicing computers. Pc-Check® Windows® offers the greatest support for testing a multitude of new or legacy devices both pre-boot WinPE or full Windows operating system.

Eurosoft has helped to find millions of computer failures since 1980. No exaggeration! Celebrating 40+ years — with success from our exceptional customers.

NOTE: *WinPE has reduced driver support limiting its test function. The full Windows operating system is required for certain device driven hardware.

Eurosoft (UK) Ltd
Tel +44 (0)1202 297315
Fax: +44 (0)1202 558280
www.eurosoft-uk.com

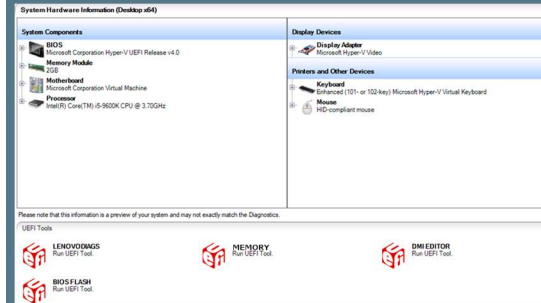
Eurosoft (US) Inc.
Tel +1 (712) 255-7483
Fax: +1 (866) 615-9384
www.eurosoft-us.com

SEND US YOUR IDEAS....

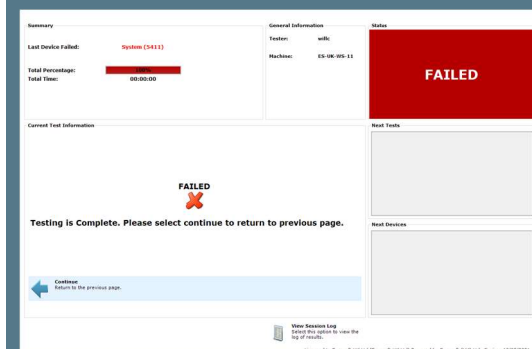
[Support and Feature Requests](#)

Product Announcement Pc-Check® Windows®

Launch 3rd Party UEFI Tools



Blue Screen Of Death Test



Diagnostics out of date? Other tools not meeting your demands? Call us to discuss your testing needs. Visit our website to order all the Pc-Check® diagnostic suite at any time. Site licenses, special development and quantity discounts available. DATA ERASURE — ZeroData™ Windows® is ready for you.



© Eurosoft (UK) Ltd. 1988-2021. Pc-Check is a registered trademark of Eurosoft (UK) Ltd. PC Builder, Pc-Check UEFI, Pc-Check Windows, Pc-Check Virtual Pc-Check, ZeroData, ZeroData Windows, USB Preferred Port Plug, CDT, DVDIT, EuroDOS are trademarks of Eurosoft (UK) Ltd. All other product trademarks are recognised as belonging to their respective owners. REV210921KHSR

Note: Windows PE v1.x contains a security feature that will cause end user's systems to reboot without prior notification to the end user after 24 hours of continuous use. Windows PE v2.x contains a security feature that will cause end user's systems to reboot without prior notification to the end user after 72 hours of continuous use.