

Pc-Check® UEFI v1.07

TRENDING... *NEW Graphics Card Testing*

New Graphics Card group with added testing of Display Memory so you can gauge exactly how much memory is in use and available for other resources. For more reliability success, always test the full PC for 100% assuredness.

Pc-Check® Self-boot is included with Pc-Check® UEFI. *Read on...*

Awesome reminders, only Eurosoft do these...

Pc-Check UEFI diagnostics identify your hardware failures – ***precisely***. Unlike other so called UEFI diagnostics, Pc-Check® UEFI diagnostics directly access and test essential UEFI components, regardless of BIOS or brand. **NO operating system in the way – NO Linux, NO Windows, NO secure boot issues – only UEFI testing in pure native mode.**

Test more memory, drives and CPUs like no other diagnostic tool – remarkable **256 DIMM up to 2-Exabytes memory**, and **'Multi-Exabyte' drives**, plus **1024 'Kilo-core' CPU packages** and *more tests coming...*

1st place – Longest running diagnostic company – 40 years – with spectacular results from our Micro-topology memory testing, and the original 'self-boot' capability in 1986!

Pc-Check® UEFI Features

Benefits for You

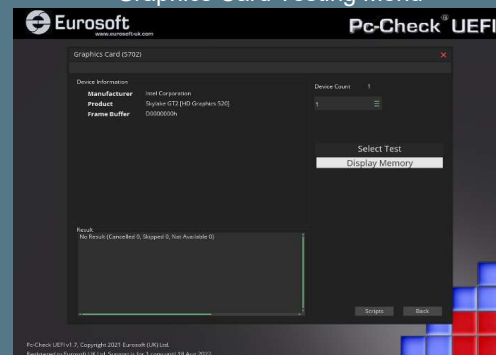
NEW Network Adaptor Locator	Shows PCI Bus location of Network Adapters to help differentiate between multiple devices.
NEW AVX Reporting	Added Advanced Vector Extensions (AVX) level reporting. System Information now includes the AVX revision supported by the processor.
NEW Memory Size Scaling	Formatted memory size and speed added to System Information using scaled unit prefixes as appropriate, i.e. MB, GB, MHz, GHz for clear measurement and reporting.
NEW Enhanced Font Display	Non-proportional font added for improved legibility of hexadecimal data, for example System Variables (NVRAM) data display.
Enhanced Exception Handling	No need to disable entire feature sets for problematic systems. Perform more testing on these PCs than you could before.
Updated I/O Display	Serial Port I/O addresses displayed onscreen and in reports in the more familiar hexadecimal format.
Updated XML Characters	Added missing 'special character' handling for XML results file (device name could contain invalid XML characters).

Product Announcement Pc-Check® UEFI

Graphics Card Testing



Graphics Card Testing Menu



Advanced Vector Extension Reporting

BIOS	Type	Intel(R) Core(TM) i7-5820K CPU @ 3.30GHz
PROCESSOR	Speed	3.29GHz
MEMORY	Cores	6
FIXED DRIVES	Threads	2
VIDEO	Physical CPUs	1
AUDIO	Logical CPUs	12
NETWORK	Serial Number	Unknown
BUSES	Max SSE Level	SSE4.2
PORTS	Max AVX Level	AVX2
	External Clock	100Hz
	L1 Cache per Core	32KB + 32KB (64KB)
	L2 Cache per Core	256KB Unified
	L3 Cache	15MB Unified (Shared)



Like what you see?

Combine **Pc-Check® UEFI** and **Pc-Check®**, the ultimate bare metal testing solution with **Pc-Check® Windows®**, expanding your range of diagnostics to a perfect 3-point test plan.

FREE Updates and technical support provided automatically for one year. Keep your hardware testing methods current. Upgrade to the latest version of **Pc-Check UEFI**

ALL FEATURED UPDATES

www.eurosoft-uk.com

Eurosoft (UK) Ltd
Tel +44 (0)1202 297315
Fax: +44 (0)1202 558280
www.eurosoft-uk.com

Eurosoft (US) Inc.
Tel +1 (712) 255-7483
Fax: +1 (866) 615-9384
www.eurosoft-us.com

SEND US YOUR IDEAS & ISSUES....

[Support and Feature Requests](#)

Pc-Check®UEFI Features

Benefits for You

Improved MAC Address	Network Adapters MAC address displays full numerical output.
Updated WinPE Exit	Windows PE exits results page without operator interaction.
Updated System Freeze	Adjusted system freeze during testing of SATA SSD or Hard Disks This most frequently occurs for the Internal Cache test, but can also affect other media tests. Note: predominantly HP.

Pc-Check® Self-boot V8.11 Notes:

Enhancements and solutions..

Solved intermittent 'Stack Overflow' during burn-in testing, manifested as reboot or hang when closing journal file. Note: not all systems affected,

Stop creation of reports and/or journal file by specifying an empty filename, for example /RF="" /JF="".

Improved long burn-in testing reporting and stability, solving rare report issue where burn-in runs incorrect end date and time, leading to inaccurate duration information.

Updated PCI devices added to the database.

REMINDER – Pc-Check (Self-boot original aka EuroDOS) is included alongside Pc-Check UEFI diagnostics to test legacy PCs and those that you can still disable Secure Boot if desired.

Including the original Pc-Check® Self-boot, Pc-Check UEFI offers the ultimate 'bare-metal' testing solution.

Combine Pc-Check® Windows, expanding your range of diagnostics to a perfect 3-point test plan.

////////////////////////////////////

Developing intricate computer diagnostic software – because other hardware tests miss them completely – Pc-Check UEFI is indispensable.

Count on a continued flow of reliable test results whether building, installing, supporting or servicing computers. Pc-Check UEFI offers the greatest support for testing a multitude of new or legacy devices outside of the operating system.

Eurosoft has helped to find millions of computer failures since 1980. No exaggeration! Celebrating 40+ years — with success from our exceptional customers.

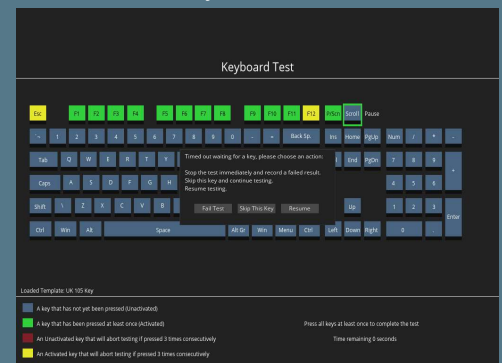
NOTE: *Keyboard, mouse and touch testing require UEFI firmware support. Some BIOS may exhibit known issues that limit test function.

Eurosoft (UK) Ltd
Tel +44 (0)1202 297315
Fax: +44 (0)1202 558280
www.eurosoft-uk.com

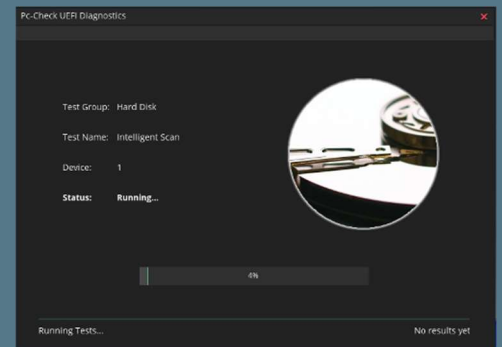
Eurosoft (US) Inc.
Tel +1 (712) 255-7483
Fax: +1 (866) 615-9384
www.eurosoft-us.com

SEND US YOUR IDEAS & ISSUES.... [Support and Feature Requests](#)

Keyboard Test



Intelligent Scan Test



Test Errors & Troubleshooting

Errors and Troubleshooting	
Serial Ports - Serial Port	
FIFO - Not Available	
0x003FF-0045	The test cannot be executed because something is missing.
Most likely a loopback plug was not detected at the port.	
Serial Ports - Serial Port	
FIFO - Not Available	
0x003FF-0045	The test cannot be executed because something is missing.
Most likely a loopback plug was not detected at the port.	
Network Interface - Intel(R) Ethernet Connection (2) I218-V	
ICMP - Failed	
0x003FF-0003	IP v4 conversion error. IP address in configuration file is not in correct format.
The device may be faulty. Check that all prerequisites were met correctly.	

Diagnostics out of date? Other tools not meeting your demands? Call us to discuss your testing needs. Visit our website to order all the Pc-Check® diagnostic suite at any time. Site licenses, special development and quantity discounts available. DATA ERASURE — [ZeroData Windows®](#) is ready for you.



© Eurosoft (UK) Ltd. 1988-2021. Pc-Check is a registered trademark of Eurosoft (UK) Ltd. PC Builder, Pc-Check UEFI, Pc-Check Windows, Pc-Check Virtual Pc-Check, ZeroData, ZeroData Windows, USB Preferred Port Plug, CDT, DVDIT, EuroDOS are trademarks of Eurosoft (UK) Ltd. All other product trademarks are recognised as belonging to their respective owners. REV190821

Note: Windows PE v1.x contains a security feature that will cause end user's systems to reboot without prior notification to the end user after 24 hours of continuous use. Windows PE v2.x contains a security feature that will cause end user's systems to reboot without prior notification to the end user after 72 hours of continuous use.