

## Pc-Check® Windows® V3.2.1.22

**TRENDING... Before-and-After PC**

**Earth Day is everyday – just ask a PC refurbisher, repair depot, IT technician or any local shop owner.**

Saving PCs for continued life is the Reuse / Repair / Refurbish call-to-action globally. It doesn't take much to up-cycle or recycle the PCs you are trading or have direct responsibility for. What matters most is the reliability of the hardware you choose to reuse. Knowing that it is indeed compatible and stable when you want to upgrade or up-cycle. **Simple Solution: TEST, TEST, TEST the PC to help you make the best decision on the hardware 'Before-and-After' outcome.**

Pc-Check® Windows® has 1000's of test features and scripts to help you ensure reliable PC hardware. There are loads of assets in each PC, ready to spring into action. Take advantage of using the Motherboard Serial Number to track the PC's you test. Think GPU's, CPU's, memory, SSD/HDD -- stress test them and you'll soon know what's available to use again or sell on. Deliver and repurpose only the very best PCs you can. Make Earth Day arrive every day of the year. Test those PCs, knocking out which hardware continues to be used, and what gets replaced. Help save our resources.

**Awesome reminders, only Eurosoft do these...**

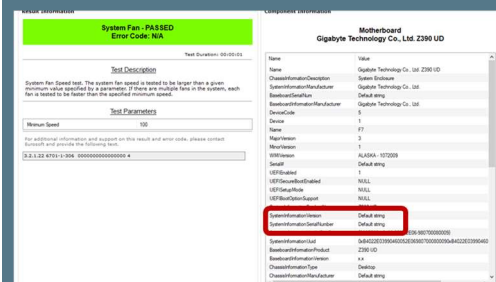
**Test more memory than other Windows-based diagnostic tools** – Unlimited DIMM reporting 512Gb (W8.1) to **1TB memory** (W10, 64Bit); and **2-Exabyte drives; 256 core CPU** packages, video, and UEFI enabled hardware.

**1<sup>st</sup> place** – Longest running diagnostic company – 40+ years – with spectacular results from the first-on-the-scene **Microtopology** memory testing, and the original 'self-boot' capability in 1986!

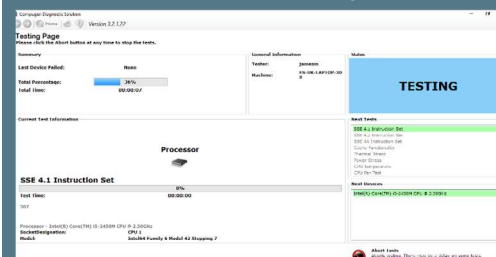
Pc-Check® Windows® features	Benefits for You
<b>Featured</b> Motherboard Component Information	Take advantage of the Motherboard Serial Numbers, automatically pulled from User Defined Customizations, CMOS Check Sum test and displayed in every test log and report. Excellent for tracking PC details.
<b>Updated</b> CPUID Support	Greater test coverage of the newest processors. Support added to test the following: Intel Core 11th generation "Rocket Lake" AMD ThreadRipper PRO 3995WX, 3975WX, 3945WX and WRX80 chipset. AMD Cezanne and Lucienne APUs.
<b>Enhanced</b> NVMe Detection	Updates to NVMe detection for improved testing and identification of hybrid Solid State Hard Drives.
<b>Enhanced</b> Serial Port Testing	Improved Serial Endurance test to ensure better fault finding and error capture.
<b>Updated</b> Licensing Mechanism	Licensing improvements will make it quicker and easier to update to the latest releases.

## Product Announcement Pc-Check® Windows®

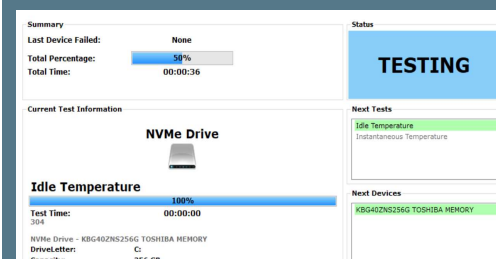
### Motherboard Component Information



### Processor Testing



### NVMe Testing



Combine **Pc-Check® Windows®** with the ultimate bare metal testing solution **Pc-Check® UEFI** and **Pc-Check®** for legacy and new UEFI based PCs, expanding your range of diagnostics to a perfect 3-point test plan.



FREE Updates and technical support provided automatically for one year. Keep your hardware testing methods current. Upgrade to the latest version of **Pc-Check Windows**

### PREVIOUS FEATURED UPDATES

[www.eurosoft-uk.com](http://www.eurosoft-uk.com)

## Highlights of previous updates & enhancements...

### Pc-Check® Windows® features

### Benefits for You

<b>New</b> Run 3 <sup>rd</sup> party UEFI Tools Integration	In a single session, thoroughly test and certify PC hardware non-interactively before launching other UEFI tools of choice such as BIOS flashing or DMI tools to write information such as the serial number to the system.
<b>New</b> IR Camera Test	Check for the presence and functionality of an Infra-red camera which are typically used for facial recognition.
<b>New</b> Keyboard Attach/Detach Tests	For laptops and hybrid/convertible devices such as Microsoft Surface, test that a keyboard dock will detach and reconnect correctly.
<b>New</b> S.M.A.R.T. Attribute Wear Level Tests	Check the S.M.A.R.T. Attribute Wear Level value. Wear level delta is a wear level difference between most used and least used sectors. If value is equal to the threshold, then disk data backup and disk replacement is recommended.
<b>New</b> S.M.A.R.T. Custom and S.M.A.R.T. Threshold Tests	An early warning of potential storage drive failure. Checks the set S.M.A.R.T. value against the manufacturer predefined limits or customise the upper and lower thresholds for a clear picture of drive health.
<b>New</b> Hard Drive Temperature Tests	The Idle Temperature test checks the temperature reading of the hard drive against the minimum and maximum test parameters taking temperature readings over the set duration. The Instantaneous Temperature test is run after the drive tests have been completed, giving a clearer indication of drive temperature after use.
<b>New</b> Monitor Brightness Test	Change a screens brightness from 0-100% ensuring that a device such as a tablet will automatically be able to change screen brightness depending on light conditions.

**Developing intricate computer diagnostic software – because other hardware tests miss them completely** – Pc-Check Windows is indispensable. Count on a continued flow of reliable test results whether building, installing, supporting or servicing computers. Pc-Check Windows now offers greater support for testing multiple devices under the latest Microsoft operating systems.

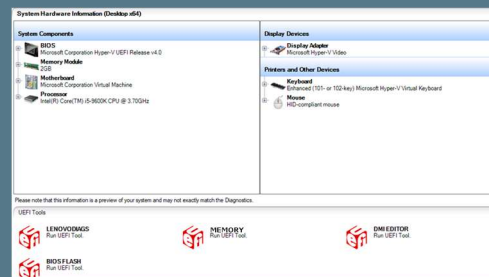
**Eurosoft has helped to find millions of computer failures since 1980. No exaggeration! Celebrating 40 years — with success from our exceptional customers.**

**Eurosoft (UK) Ltd**  
 Tel: +44 (0)1202 297315  
 Fax: +44 (0)1202 558280  
[www.eurosoft-uk.com](http://www.eurosoft-uk.com)

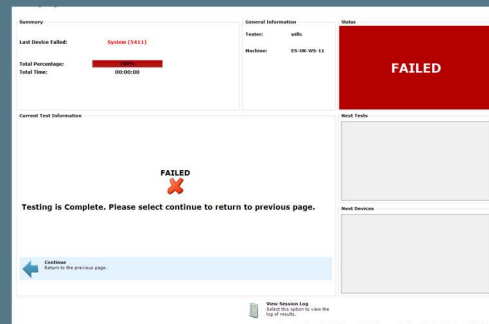
**Eurosoft (US) Inc.**  
 Tel: +1 (712) 255-7483  
 Fax: +1 (866) 615-9384  
[www.eurosoft-us.com](http://www.eurosoft-us.com)

## Product Announcement Pc-Check® Windows®

### Launch 3rd Party UEFI Tools



### Blue Screen Of Death Test



Diagnostics out of date? Other products not meeting your demands? Call us now for competition beating pricing. visit our website to order Pc-Check Windows packs at any time (Call direct for a variety of site licenses, competitor discounts are our pleasure.)



© Eurosoft (UK) Ltd. 1988-2021. Pc-Check is a registered trademark of Eurosoft (UK) Ltd. PC Builder, Pc-Check UEFI, Pc-Check Windows, Pc-Check Virtual Pc-Check, ZeroData, ZeroData Windows, USB Preferred Port Plug, CDT, DVD, EuroDOS are trademarks of Eurosoft (UK) Ltd. All other product trademarks are recognised as belonging to their respective owners. REV200521

**Note:** Windows PE v1.x contains a security feature that will cause end user's systems to reboot without prior notification to the end user after 24 hours of continuous use. Windows PE v2.x contains a security feature that will cause end user's systems to reboot without prior notification to the end user after 72 hours of continuous use.