

Pc-Check® UEFI v1.6

Awesome reminders, only Eurosoft do these...

Pc-Check UEFI diagnostics identify your hardware failures – **precisely**. Unlike other so called UEFI diagnostics, Pc-Check® UEFI diagnostics directly access and test essential UEFI components, regardless of BIOS or brand. **NO operating system in the way – NO Linux, NO Windows, NO secure boot issues – only UEFI testing in pure native mode.**

Test more memory, drives and CPUs like no other diagnostic tool – remarkable **256 DIMM up to 2-Exabytes memory**, and **'Multi-Exabyte' drives**, plus **1024 'Kilo-core' CPU packages** and *more tests coming...*

1st place – Longest running diagnostic company – 40 years – with spectacular results from our Microtopology memory testing, and the original 'self-boot' capability in 1986!

TRENDING... *Faster Storage Device Testing*

Large Storage device testing just got quicker. With a unique Eurosoft **algorithm**, the Intelligent Scan provides a **huge time saving benefit** when scanning large media for issues such as bad sectors, without the loss of test accuracy. For more reliability success, test the full PC for 100% assuredness.

Pc-Check® UEFI features

Benefits for You

NEW Intelligent Scan Test	The unique Eurosoft Intelligent Scan algorithm is an alternative to traditional Linear Read testing methods. Significantly reduce testing time for large Hard Disks, SSD, NVMe, and System Block Devices when scanning for issues such as bad sectors.
NEW Interactive testing program behaviour	Set parameters in interactive mode are now persistent between test executions rather than resetting to default each time. Test parameters can easily be reset to default at the click of a button.
NEW Report Features	Reports now include more information about test errors and provide greater troubleshooting help.
Enhanced User Interface	Brand new 'Scripts' button, available in interactive mode provides quick and convenient access to testing scripts for the selected component group. For example to access the 'Run All' group script or user defined scripts with specific parameter settings.
Enhanced duration testing	When an interrupted test is duration based, testing now adjusts for time spent waiting for input from the user, ensuring that the real time spent testing is not reduced below the specified duration.

Eurosoft (UK) Ltd
Tel +44 (0)1202 297315
Fax: +44 (0)1202 558280
www.eurosoft-uk.com

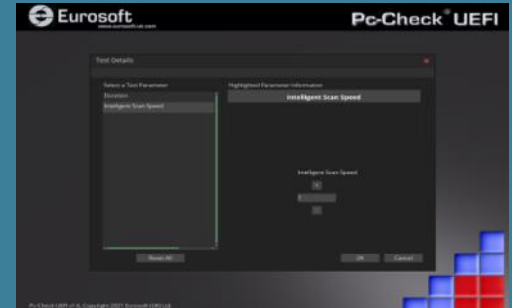
Eurosoft (US) Inc.
Tel +1 (712) 255-7483
Fax: +1 (866) 615-9384
www.eurosoft-us.com

SEND US YOUR IDEAS & ISSUES....

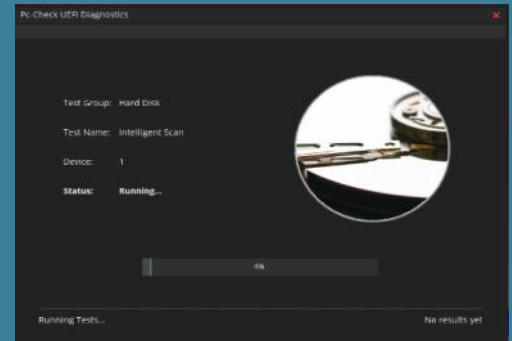
[Support and Feature Requests](#)

Product Announcement Pc-Check® UEFI

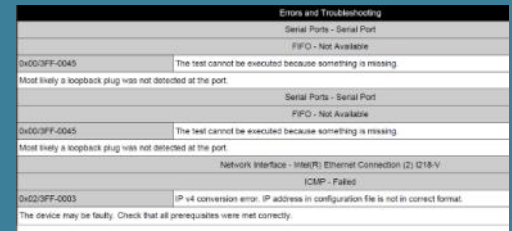
Intelligent Scan Test Parameters



Intelligent Scan Test



Test Errors & Troubleshooting



Like what you see?

Combine **Pc-Check® UEFI** and **Pc-Check®**, the ultimate bare metal testing solution with **Pc-Check® Windows®**, expanding your range of diagnostics to a perfect 3-point test plan.

FREE Updates and technical support provided automatically for one year. Keep your hardware testing methods current. Upgrade to the latest version of **Pc-Check UEFI**

ALL FEATURED UPDATES

www.eurosoft-uk.com

Pc-Check® UEFI features

Benefits for You

Enhanced Cache Testing	Test more systems with improved compatibility for hard drive and SSD cache testing, overcoming previous BIOS limitations that could potentially cause testing to fail.
Updated Test Scripts	New tests added to predefined test scripts, no need for user updating, just select and start testing.
Updated PCI Device Database	Providing wider test coverage of the latest PCI devices.

Pc-Check® V8.10 Notes:

REMINDER – Pc-Check (Self-boot original aka EuroDOS) is included alongside Pc-Check UEFI diagnostics to test legacy PCs and those that you can still disable Secure Boot if desired.

Pc-Check enhancements to long burn-in testing improves reporting and stability solves rare issue where long burn-in runs report incorrect end date and time information, and so leading also to inaccurate duration information.

Additionally, Pc-Check has had the PCI device database updated.

Including the original Pc-Check® Self-boot, Pc-Check UEFI offers the ultimate 'bare-metal' testing solution.

Combine with Pc-Check® Windows expanding your range of diagnostics to a perfect 3-point test plan.

////////////////////////////////////

Developing intricate computer diagnostic software – because other hardware tests miss them completely – Pc-Check UEFI is indispensable.

Count on a continued flow of reliable test results whether building, installing, supporting or servicing computers. Pc-Check UEFI offers the greatest support for testing a multitude of new or legacy devices outside of the operating system.

Eurosoft has helped to find millions of computer failures since 1980. No exaggeration! Celebrating 40 years — with success from our exceptional customers.

**Keyboard, mouse and touch testing require UEFI firmware support. Some BIOS may exhibit known issues that limit test function.*

Eurosoft (UK) Ltd
Tel +44 (0)1202 297315
Fax: +44 (0)1202 558280
www.eurosoft-uk.com

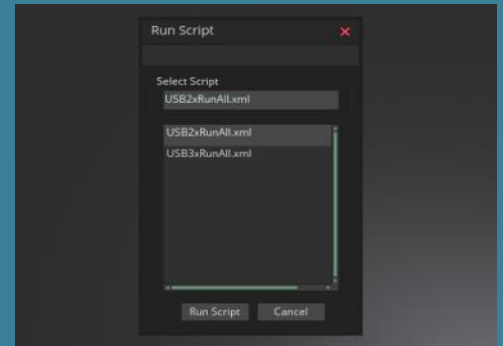
Eurosoft (US) Inc.
Tel +1 (712) 255-7483
Fax: +1 (866) 615-9384
www.eurosoft-us.com

SEND US YOUR IDEAS & ISSUES.... [Support and Feature Requests](#)

Keyboard Test



Simple Script Selection



SMBIOS Information



Diagnostics out of date? Other products not meeting your demands? Call us now for competition beating pricing. Visit our website to order Pc-Check UEFI packs at any time (Call direct for a variety of site licenses, competitor discounts are our pleasure.)



© Eurosoft (UK) Ltd. 1988-2021. Pc-Check is a registered trademark of Eurosoft (UK) Ltd. PC Builder, Pc-Check UEFI, Pc-Check Windows, Pc-Check Virtual Pc-Check, ZeroData, ZeroData Windows, USB Preferred Port Plug, CDT, DVD, EuroDOS are trademarks of Eurosoft (UK) Ltd. All other product trademarks are recognised as belonging to their respective owners. REV230421

Note: Windows PE v1.x contains a security feature that will cause end user's systems to reboot without prior notification to the end user after 24 hours of continuous use. Windows PE v2.x contains a security feature that will cause end user's systems to reboot without prior notification to the end user after 72 hours of continuous use.