

## Pc-Check® Windows® V3.2.1.8

**Awesome reminders, only Eurosoft do these...**

**Test more memory than other Windows-based diagnostic tools** – Unlimited DIMM reporting 512Gb (W8.1) to **1TB memory** (W10, 64Bit); and **2-Exabyte drives; 256 core CPU** packages, video, and UEFI enabled hardware.

**1<sup>st</sup> place** – Longest running diagnostic company – 40 years – with spectacular results from our **Microtopology** memory testing, and the original 'self-boot' capability in 1986!

### Pc-Check® Windows® features

### Benefits for You

**New Star Feature** – Run 3<sup>rd</sup> party UEFI Tools Integration

In a single session, thoroughly test and certify PC hardware non-interactively before launching other UEFI tools of choice such as BIOS flashing or DMI tools to write information such as the serial number to the system. No need for the additional use of multiple media or programs. Pc-Check Windows displays an icon in the user interface for executing this.

**New IR Camera Test**

Check for the presence and functionality of an Infra-red camera which are typically used for facial recognition e.g. Microsoft Hello, and allow clear pictures even in low light conditions.

**New Keyboard Attach/Detach Tests**

For laptops and hybrid/convertible devices such as Microsoft Surface, test that a keyboard dock will detach and reconnect correctly to reduce the risk of keyboard 'bounce' when removed. Demonstrates potentially faulty keyboard device hardware connection issues.

**New S.M.A.R.T. Attribute Wear Level Tests**

This SSD specific test checks the S.M.A.R.T. Attribute Wear Level value. Wear level delta is a wear level difference between most used and least used sectors. If value is equal to the threshold, then disk data backup and disk replacement is recommended even if disk is not showing any apparent issues.

**New S.M.A.R.T. Custom and S.M.A.R.T. Threshold Tests**

An early warning of potential storage drive failure for hard drives and SSD. Checks the set S.M.A.R.T. value against the manufacturer predefined limits or customise the upper and lower thresholds for a clear picture of drive health. This test is useful for monitoring purposes.

**New Hard Drive Temperature Tests**

Designed to be run prior to testing the drive, the Idle Temperature test checks the temperature reading of the hard drive against the minimum and maximum test parameters taking temperature readings over the set duration. The Instantaneous Temperature test is designed to be run after the other drive tests have been completed, giving a clearer indication of drive temperature after use. The temperature reading of the hard drive is checked against the minimum and maximum test parameters for comparative analysis.

**New Monitor Brightness Test**

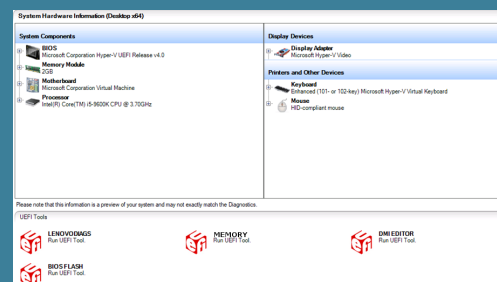
Change a screens brightness from 0-100% ensuring that a device such as a tablet will automatically be able to change screen brightness depending on light conditions when set to do so.

**New Data Route Test**

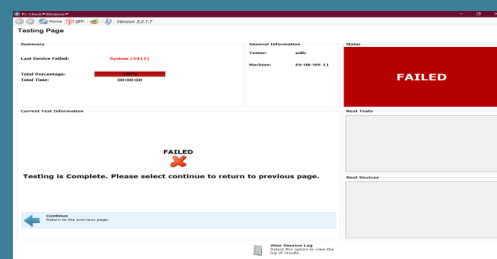
This test writes a set of test data into memory using one core, before checking the data written using the other processor cores.

## Product Announcement Pc-Check® Windows®

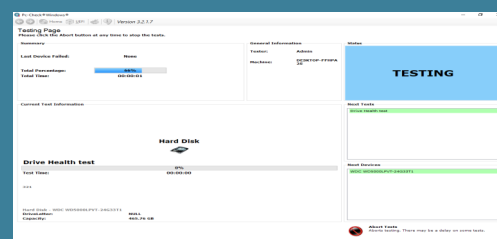
Launch 3rd party UEFI tools



### Blue Screen Of Death Test



### Drive Health Test



Combine Pc-Check® Windows with the ultimate bare metal testing solution Pc-Check® UEFI and Pc-Check® for legacy and new UEFI based PCs, expanding your range of diagnostics to a perfect 3-point test plan.



FREE Updates and technical support provided automatically for one year. Keep your hardware testing methods current. Upgrade to the latest version of **Pc-Check Windows**

### PREVIOUS FEATURED UPDATES

[www.eurosoft-uk.com](http://www.eurosoft-uk.com)

## Pc-Check® Windows® features

## Benefits for You

<b>Improved</b> Blue Screen of Death (BSOD) Test	New addition presents errors when Microsoft Windows encounters a critical error that it cannot recover from. BSOD are generally caused by problems with the computer hardware or issues with its hardware drivers. This test will check the Windows event log for BSOD errors, and will gather extended information on these errors. When a BSOD error occurs, it creates a dump file that will be stored on the system which can be used later for troubleshooting purposes and fixing the problems.
<b>Improved</b> Bluetooth Device Tests.	New addition identifies a devices bluetooth controller and test the connectivity and identification of client devices. Search for devices within the defined Received Signal Strength Indicator (RSSI), then initialise an authentication session between the host and client to check that pairing functions correctly
<b>Enhanced</b> Stress Test	Updated with improved multi rendering GPU tests, providing more rigorous testing. Stress testing emphasises systems' robustness, and error handling under a heavy load, ensuring system stability in use.
<b>Enhanced</b> WinPE Monitor/Display Tests	Monitor Group tests enabled for WinPE, adding ability to test display/monitors using WinPE if the full operating system has not already been loaded on the PC.
<b>Updated</b> Test Scripts	The default test scripts are now updated to improve script handling and support for test name changing through the test script. Includes the newly introduced tests, providing the most complete testing coverage. As always, unlimited preferred test scripts can be prepared as required.
<b>Updated</b> Processor Support	Includes AMD "Renoir" Ryzen APU, Ryzen 3 3100, 3300X Ryzen Threadripper 3960X, 3970X, 3990X and TRX40 chipsets. Intel Z490, W480, B460, Core 10xxx Comet Lake processors. Preliminary support added for the new Centaur server class CPU with AI processing capability.

**Developing intricate computer diagnostic software – because other hardware tests miss them completely** – Pc-Check Windows is indispensable. Count on a continued flow of reliable test results whether building, installing, supporting or servicing computers. Pc-Check Windows now offers greater support for testing multiple devices under the latest Microsoft operating systems.

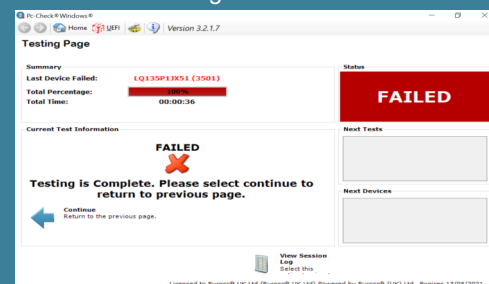
**Eurosoft has helped to find millions of computer failures since 1980. No exaggeration! Celebrating 40 years — with success from our exceptional customers.**

**Eurosoft (UK) Ltd**  
Tel: +44 (0)1202 297315  
Fax: +44 (0)1202 558280  
www.eurosoft-uk.com

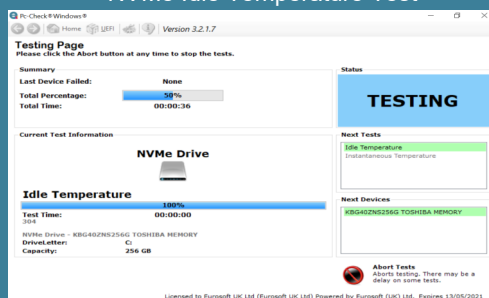
**Eurosoft (US) Inc.**  
Tel: +1 (712) 255-7483  
Fax: +1 (866) 615-9384  
www.eurosoft-us.com

## Product Announcement Pc-Check® Windows®

### Monitor Brightness Test Failure



### NVMe Idle Temperature Test



Diagnostics out of date? Other products not meeting your demands? Call us now for competition beating pricing. visit our website to order Pc-Check Windows packs at any time (Call direct for a variety of site licenses, competitor discounts are our pleasure.)



© Eurosoft (UK) Ltd. 1988-2020. Pc-Check is a registered trademark of Eurosoft (UK) Ltd. PC Builder, Pc-Check UEFI, Pc-Check Windows, Pc-Check Virtual Pc-Check, ZeroData, ZeroData Windows, USB Preferred Port Plug, CDT, DVD, EuroDOS are trademarks of Eurosoft (UK) Ltd. All other product trademarks are recognised as belonging to their respective owners. REV290520

**Note:** Windows PE v1.x contains a security feature that will cause end user's systems to reboot without prior notification to the end user after 24 hours of continuous use. Windows PE v2.x contains a security feature that will cause end user's systems to reboot without prior notification to the end user after 72 hours of continuous use.