

## Pc-Check® v8.06

**Enhanced processor support for Intel Kaby Lake and Apollo Lake chip sets. Enhancements made to command line switches to help identify and test more serial ports, particularly for industrial systems.**

**Pc-Check continues to provide the greatest test coverage possible, on the widest variety of PC systems, in an OS free, self-booting environment.**

Eurosoft has helped users worldwide to find millions of computer failures since 1980. No exaggeration.

Developing intricate computer diagnostic software – because other hardware tests miss them completely – Eurosoft fulfils challenging testing needs for computer-based environments. Supporting computers built around Microsoft, AMD and Intel technologies, we determine missing, failed and perfect computer components – regardless of brand.

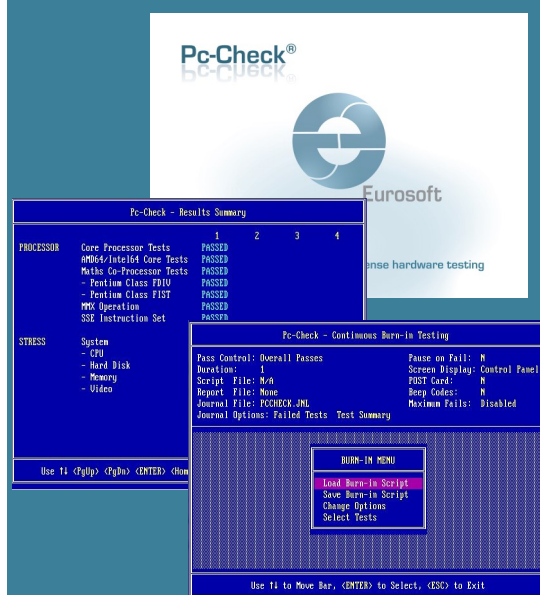
Pc-Check® gives you the confidence you need to validate working versus problematic hardware. Pc-Check® has more commercial years of professional users than any diagnostic software. Join our dedicated customers, from OEM to local service shop, ensuring reliable test results today.

Pc-Check® upgrades keep you up-to-date with the latest diagnostics and best case testing practices. You can count on a continued flow of reliable test results whether you are building, installing, supporting, servicing or refurbishing computers. Pc-Check® offers you greater support for testing multiple devices regardless of operating systems.

Pc-Check® features	The benefits to you
<b>Enhanced processor testing</b>	Support added for testing the new generation of Intel Kaby Lake and Apollo Lake chip sets keeping your testing methods for the latest hardware up to date.
<b>Enhanced Hard drive testing and reporting</b>	More accurate Identification of IDE hard drives as PATA/SATA/AHCI depending on which standard is supported. Also greater compatibility with SMART drive testing where the hard drive firmware does not follow the designated specification for updating SMART data.
<b>Enhanced Start up behaviour</b>	Reduced base memory foot print for booting on a wider variety of systems increasing your test coverage.
<b>Enhanced PCI device identification</b>	Updates to the PCI Device and Vendor database makes it possible to identify and test more PCI devices than was previously possible.

## now shipping!

If your diagnostics are out of date, don't wait! Call us now to upgrade or get your site license. Visit our website to order more great Pc-Check® packs.



Upgrading to the latest version of Pc-Check® (8.06) keeps your hardware testing methods current. Upgrades and technical support are provided to you automatically for one year.

Check out features included in past updates at [www.eurosoft-uk.com](http://www.eurosoft-uk.com)



**Eurosoft (UK) Ltd**  
Tel: +44 (0)1202 297315  
Fax: +44 (0)1202 558280  
[www.eurosoft-uk.com](http://www.eurosoft-uk.com)

**Eurosoft (US) Inc**  
Tel: +1 712 255 7483  
Fax: +1 866 615 9384  
[www.eurosoft-us.com](http://www.eurosoft-us.com)

© Eurosoft (UK) Ltd. 1988-2016. Pc-Check is a registered trademark of Eurosoft (UK) Ltd. Virtual Pc-Check, VPCS-Console, Aggregator, Boot2Test, QA+Win, QA+Win32, QAPlus, Virtual QA+, Amberstone, PC Builder, QaTest32, Zero-Data, USB Preferred Port Plug, CDT, DVDIT, EuroBIOS, EuroDOS are trademarks of Eurosoft (UK) Ltd. All other product trademarks are recognised as belonging to their respective owners. Windows is a registered trademark of Microsoft Corporation in the United States and other countries. Products or information may change without notice. Windows is a registered trademark of Microsoft Corporation in the United States and other countries. Products or information may change without notice. The Microsoft® Windows® Pre-installation Environment software included with this device or software may be used for boot, diagnostic, setup, restoration, installation, configuration, test or disaster recovery purposes only. **Note: Windows PE v1.x contains a security feature that will cause end user's systems to reboot without prior notification to the end user after 24 hours of continuous use. Windows PE v2.x contains a security feature that will cause end user's systems to reboot without prior notification to the end user after 72 hours of continuous use.**