

Pc-Check® v8.05

Enhanced processor support for Intel Sky Lake chipsets. Enhancements made to command line switches to help identify and test more serial ports, particularly for industrial systems.

Pc-Check continues to provide the greatest test coverage possible, on the widest variety of PC systems, in an OS free, self-booting environment.

Eurosoft has helped users worldwide to find millions of computer failures since 1980. No exaggeration.

Developing intricate computer diagnostic software – because other hardware tests miss them completely – Eurosoft fulfils challenging testing needs for computer-based environments. Supporting computers built around Microsoft, AMD and Intel technologies, we determine missing, failed and perfect computer components – regardless of brand.

Pc-Check® gives you the confidence you need to validate working versus problematic hardware. Pc-Check® has more commercial years of professional users than any diagnostic software. Join our dedicated customers, from OEM to local service shop, ensuring reliable test results today.

Pc-Check® upgrades keep you up-to-date with the latest diagnostics and best case testing practices. You can count on a continued flow of reliable test results whether you are building, installing, supporting, servicing or refurbishing computers. Pc-Check® offers you greater support for testing multiple devices regardless of operating systems.

Pc-Check® features

Enhanced processor testing

The benefits to you

Support added for testing the new generation of Intel Sky Lake and Sky Lake E Chipsets keeping your testing methods for the latest hardware up to date.

Enhanced serial port testing

Added support for IRQ 6 to command line switch /SP to allow you to identify Serial Port IRQ's. Normally reserved for the Floppy Disk Controller, a number of systems are starting to utilise this IRQ in the absence of a Floppy Controller. Particularly useful when testing industrial systems. Also includes improved testing for EPOS Systems with more than 4 Serial Ports.

Enhanced Network adaptor support

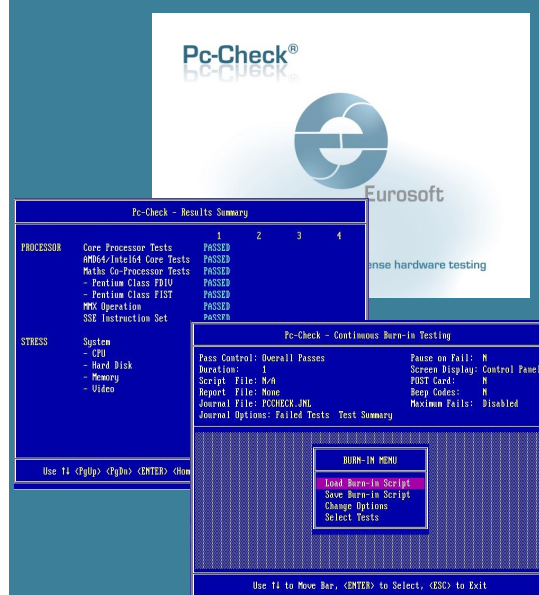
Now includes support to identify and test Intel Lynx Point network adaptors.

Enhanced PCI device identification

Updates to the PCI Device and Vendor database makes it possible to identify and test more PCI devices than was previously possible.

now shipping!

If your diagnostics are out of date, don't wait! Call us now to upgrade or get your site license. Visit our website to order more great Pc-Check® packs.



Upgrading to the latest version of Pc-Check® (8.05) keeps your hardware testing methods current. Upgrades and technical support are provided to you automatically for one year.

Check out features included in past updates at www.eurosoft-uk.com



Eurosoft (UK) Ltd

Tel: +44 (0)1202 297315

Fax: +44 (0)1202 558280

www.eurosoft-uk.com

Eurosoft (US) Inc

Tel: +1 712 255 7483

Fax: +1 866 615 9384

www.eurosoft-us.com

© Eurosoft (UK) Ltd. 1988-2016. Pc-Check is a registered trademark of Eurosoft (UK) Ltd. Virtual Pc-Check, VPCS-Console, Aggregator, Boot2Test, QA+Win, QA+Win32, QAPlus, Virtual QA+, Amberstone, PC Builder, QaTest32, Zero-Data, USB Preferred Port Plug, CDT, DVDIT, EuroBIOS, EuroDOS are trademarks of Eurosoft (UK) Ltd. All other product trademarks are recognised as belonging to their respective owners. Windows is a registered trademark of Microsoft Corporation in the United States and other countries. Products or information may change without notice. Windows is a registered trademark of Microsoft Corporation in the United States and other countries. Products or information may change without notice. The Microsoft® Windows® Pre-installation Environment software included with this device or software may be used for boot, diagnostic, setup, restoration, installation, configuration, test or disaster recovery purposes only. **Note: Windows PE v1.x contains a security feature that will cause end user's systems to reboot without prior notification to the end user after 24 hours of continuous use. Windows PE v2.x contains a security feature that will cause end user's systems to reboot without prior notification to the end user after 72 hours of continuous use.**