

## QA+Win™ Computer Diagnostic Software

**NEW Windows 10 compatibility** with progressive User Interface and test features for tablets. Re-examine System Benchmarking and memory testing for superior hardware reliability.

Eurosoft has helped to find millions of computer failures since 1980. No exaggeration.

Developing intricate computer diagnostic software – because other hardware tests miss them completely – QA+Win™ upgrades are indispensable. Count on a continued flow of reliable test results whether building, installing, supporting or servicing computers. QA+Win™ offers greater support for testing multiple devices under the latest Microsoft operating systems.

QA+Win™ features	The benefits to you
New Support for Windows 10.	Test the latest Windows machines with the widest and most reliable range of Windows based diagnostics.
New Reporting options...SXML 5	Conveniently see ALL of your test data from Pc-Check and QA+Win on one report.
Enhanced Battery testing.	Interactive improvements and detection test added.
New USB Connectivity test.	Check that USB ports are connected, ideal for testing front USB ports on desktops and towers.
New S.M.A.R.T. Conveyance test.	Quickly determine if there has been any damage to the hard drive during transportation from the supplier.
New Processor tests	New tests include Cache Functionality, Multi-core, Multi-processor, Core Priority, Thermal Stress, and Power Stress to allow full testing of the latest processors.
New Tablet tests added.	Added support for gyroscope, accelerometer, location, compass, and ambient light sensor testing for tablets.
Enhanced Network Test Group	Increase test coverage and added new system connected test.

### Latest Hardware Support

- Intel Skylake and Broadwell support
- AMD Athlon X2 450, Athlon X4 840 and Athlon X4 860K (Kaveri).
- AMD FX-8370, FX-8370E, FX-8320E (Vishera).
- Improved support for Intel X99 chipset.
- Support for Microsoft Windows 10.
- Intel Core M processors
- Intel i7-5960X, i7-5930K, i7-5820K, i7-4790K, i5-4690K, Pentium G3258
- TSX instructions set support (including RTM and HLE subparts)
- Intel Haswell-E processors

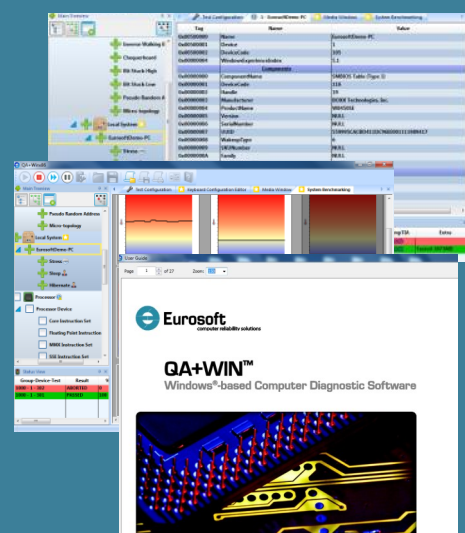
**Eurosoft (UK) Ltd**  
 Tel: +44 (0)1202 297315  
 Fax: +44 (0)1202 558280  
[www.eurosoft-uk.com](http://www.eurosoft-uk.com)

**Eurosoft (US) Inc**  
 Tel: +1 712 255 7483  
 Fax: +1 866 615-9384  
[www.eurosoft-us.com](http://www.eurosoft-us.com)



## V10.8.0 now shipping!

Diagnostics out of date? Other products not meeting your demands? Call us now for competition beating pricing. visit our website to order QA+Win™ packs at any time (Call direct for a variety of site licenses, competitor discounts are our pleasure.)



Upgrading to the latest version of QA+Win™ (10.8.0) keeps your hardware testing methods current. Upgrades and technical support are provided to you automatically for one year. Check out features included in past updates at [www.eurosoft-uk.com](http://www.eurosoft-uk.com)



© Eurosoft (UK) Ltd. 1988-2015. Pc-Check is a registered trademarks of Eurosoft (UK) Ltd. Boot2Test, PC Builder, QA+Win32, QA+Win, QA+FE Service Center, ZeroData, Virtual QA+, Virtual Pc-Check, USB Preferred Port Plug, CDT, DVDIT, EuroDOS are trademarks of Eurosoft (UK) Ltd. All other product trademarks are recognised as belonging to their respective owners.  
 Windows is a registered trademark of Microsoft Corporation in the United States and other countries. Products or information may change without notice. Windows is a registered trademark of Microsoft Corporation in the United States and other countries. Products or information may change without notice. The Microsoft® Windows® Pre-Installation Environment software included with this device or software may be used for boot, diagnostic, setup, restoration, installation, configuration, test or disaster recovery purposes only. Note: Windows PE v1.x contains a security feature that will cause end user's systems to reboot without prior notification to the end user after 24 hours of continuous use. Windows PE v2.x contains a security feature that will cause end user's systems to reboot without prior notification to the end user after 72 hours of continuous use.

Rev 2 (Release August 2015)