

Pc-Check® v8.04

Enhanced processor testing featuring a completely rewritten SSE diagnostics module. Enhancements made to command line switches to help identify and test more serial ports, and added support for DDR4 memory modules.

Pc-Check continues to provide the greatest test coverage possible, on the widest variety of PC systems, in an OS free, self-booting environment.

Eurosoft has helped users worldwide to find millions of computer failures since 1980. No exaggeration.

Developing intricate computer diagnostic software – because other hardware tests miss them completely – Eurosoft fulfils challenging testing needs for computer-based environments. Supporting computers built around Microsoft, AMD and Intel technologies, we determine missing, failed and perfect computer components – regardless of brand.

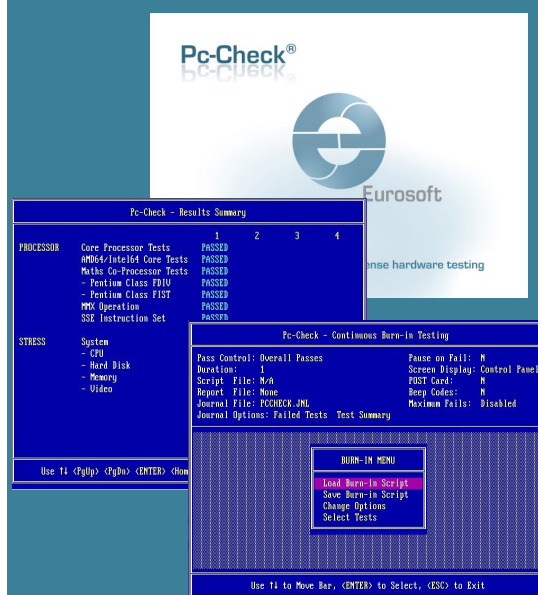
Pc-Check® gives you the confidence you need to validate working versus problematic hardware. Pc-Check® has more commercial years of professional users than any diagnostic software. Join our dedicated customers, from OEM to local service shop, ensuring reliable test results today.

Pc-Check® upgrades keep you up-to-date with the latest diagnostics and best case testing practices. You can count on a continued flow of reliable test results whether you are building, installing, supporting, servicing or refurbishing computers. Pc-Check® offers you greater support for testing multiple devices regardless of operating systems.

Pc-Check® features	The benefits to you
Enhanced processor testing module	Rewritten and optimized SSE testing allows for quicker accurate testing of processors saving you critical testing time.
Enhanced serial port testing	Added command line switches now allow you to identify and test more serial ports particularly useful for EPOS systems. Options to ignore non standard PCI serial devices, and perform an additional check when identifying PCI serial ports for add-on cards that report more ports than are supported.
Enhanced SMBIOS memory device type definitions	Now includes support to identify and test DDR4 and LPDDR memory devices.
Enhanced SMART test reporting	More accurate reporting of historic hard disk errors reported during SMART testing to help determine the state of the hard disk.
Enhanced processor test reporting	If tests are not completed for any reason, such as low base memory, the result is displayed as ERROR instead of FAIL so that the processor does not appear to be faulty unless all the test are completed.

now shipping!

If your diagnostics are out of date, don't wait! Call us now to upgrade or get your site license. Visit our website to order more great Pc-Check® packs.



Upgrading to the latest version of Pc-Check® (8.04) keeps your hardware testing methods current. Upgrades and technical support are provided to you automatically for one year.

Check out features included in past updates at www.eurosoft-uk.com



Eurosoft (UK) Ltd
Tel: +44 (0)1202 297315
Fax: +44 (0)1202 558280
www.eurosoft-uk.com



Eurosoft (US) Inc
Tel: +1 712 255 7483
Fax: +1 866 615 9384
www.eurosoft-us.com

© Eurosoft (UK) Ltd. 1988-2015. Pc-Check is a registered trademark of Eurosoft (UK) Ltd. Virtual Pc-Check, VPCS-Console, Aggregator, Boot2Test, QA+Win, QA+Win32, QAPlus, Virtual QA+, Amberstone, PC Builder, QaTest32, Zero-Data, USB Preferred Port Plug, CDT, DVDIT, EuroBIOS, EuroDOS are trademarks of Eurosoft (UK) Ltd. All other product trademarks are recognised as belonging to their respective owners. Windows is a registered trademark of Microsoft Corporation in the United States and other countries. Products or information may change without notice. Windows is a registered trademark of Microsoft Corporation in the United States and other countries. Products or information may change without notice. The Microsoft® Windows® Pre-installation Environment software included with this device or software may be used for boot, diagnostic, setup, restoration, installation, configuration, test or disaster recovery purposes only. **Note: Windows PE v1.x contains a security feature that will cause end user's systems to reboot without prior notification to the end user after 24 hours of continuous use. Windows PE v2.x contains a security feature that will cause end user's systems to reboot without prior notification to the end user after 72 hours of continuous use.**