

Pc-Check® v8.03

New hard drive data rate testing, memory Small Block Stride testing and redesigned component audit module. Enhancements made to reporting, and command line switches to help save you testing time and a smaller memory foot print for booting on a wider variety of systems.

Pc-Check continues to provide the greatest test coverage possible, on the widest variety of PC systems, in an OS free, self-booting environment.

Eurosoft has helped users worldwide to find millions of computer failures since 1980. No exaggeration.

Developing intricate computer diagnostic software – because other hardware tests miss them completely – Eurosoft fulfils challenging testing needs for computer-based environments. Supporting computers built around Microsoft, AMD and Intel technologies, we determine missing, failed and perfect computer components – regardless of brand.

Pc-Check® gives you the confidence you need to validate working versus problematic hardware. Pc-Check® has more commercial years of professional users than any diagnostic software. Join our dedicated customers, from OEM to local service shop, ensuring reliable test results today.

Pc-Check® upgrades keep you up-to-date with the latest diagnostics and best case testing practices. You can count on a continued flow of reliable test results whether you are building, installing, supporting, servicing or refurbishing computers. Pc-Check® offers you greater support for testing multiple devices regardless of operating systems.

Pc-Check® features	The benefits to you
New hard drive data rate test	Allows you to define parameters to identify and fail hard drives that potentially have slow data transfer rates but pass other tests .
New small stride block memory test	Improve chances of finding a memory problem by testing smaller memory blocks.
New Microtopoly test script options.	Test scripts now include quick and long options to offer greater testing flexibility.
Enhanced PCI device reporting and testing	Report and test on up to 8 PCI Serial Ports and 2 new command line switches to suppress individual problematic serial PCI devices and to only identify fully compliant devices.
Enhanced component audit	Rewritten test module now requires less system resources and provides results quicker.
Enhanced hard drive testing	New command lines added to save the hard disk error log on completion of testing, this will allow hard disk performance, SMART immediate data and any read/write error locations to be extracted to a text file. Disable extra S.M.A.R.T tests to match the same error log checks that would be made by manufacturers diagnostics.
Enhanced start up behaviour	Start Pc-Check with just text on systems that do not support the required graphics screen mode, and a smaller memory foot print to aid site license PXE booting.

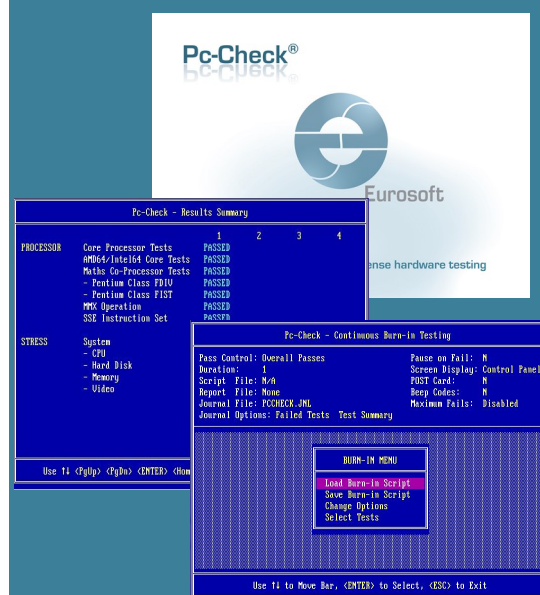


Eurosoft (UK) Ltd
Tel: +44 (0)1202 297315
Fax: +44 (0)1202 558280
www.eurosoft-uk.com

Eurosoft (US) Inc
Tel: (401) 751-9595 Fax: (866) 615-9384
Toll free tel: (888) 980-9595
www.eurosoft-us.com

now shipping!

If your diagnostics are out of date, don't wait! Call us now to upgrade or get your site license. Visit our website to order more great Pc-Check® packs.



Upgrading to the latest version of Pc-Check® (8.03) keeps your hardware testing methods current. Upgrades and technical support are provided to you automatically for one year.

Check out features included in past updates at www.eurosoft-uk.com

© Eurosoft (UK) Ltd. 1988-2015. Pc-Check is a registered trademark of Eurosoft (UK) Ltd. Virtual Pc-Check, VPCS-Console, Aggregator, Boot2Test, QA+Win, QA+Win32, QAPlus, Virtual QA+, Amberstone, PC Builder, QaTest32, Zero-Data, USB Preferred Port Plug, CDT, DVDIT, EuroBIOS, EuroDOS are trademarks of Eurosoft (UK) Ltd. All other product trademarks are recognised as belonging to their respective owners. Windows is a registered trademark of Microsoft Corporation in the United States and other countries. Products or information may change without notice. Windows is a registered trademark of Microsoft Corporation in the United States and other countries. Products or information may change without notice. The Microsoft® Windows® Pre-installation Environment software included with this device or software may be used for boot, diagnostic, setup, restoration, installation, configuration, test or disaster recovery purposes only. **Note: Windows PE v1.x contains a security feature that will cause end user's systems to reboot without prior notification to the end user after 24 hours of continuous use. Windows PE v2.x contains a security feature that will cause end user's systems to reboot without prior notification to the end user after 72 hours of continuous use.**